

1000-GALLON TOP MOUNT PUMPER

ARCOLA FIRE PROTECTION DISTRICT / ARCOLA, IL



ALEXIS



THANK YOU TO THE ARCOLA FIRE PROTECTION DISTRICT FOR THE PURCHASE OF THIS UNIT.



TECHNICAL SPECIFICATIONS

- Spartan Metro Star EMFD 10" Raised Roof Chassis
- Cummins L9 450 HP Diesel Engine
- Allison 3000 EVS Automatic Transmission
- Heavy-Duty Stainless-Steel Body and Sub-Frame
- Six (6) Person Cab Seating with Five (5) SCBA Seats
- ROM Roll Up Doors
- Custom EMS Compartment, Cab
- 1000-Gallon Poly Tank
- Hale DSD150 1500 GPM Pump
- Two (2) Running Board Hose Wells
- Two (2) 6" Suctions, Left and Right Side
- Five (5) 2 1/2" Discharges, Two (2) Left, Two (2) Right, One (1) Rear
- One (1) 2 1/2" Gated Suction, Left side
- Two (2) 5" Suctions, Front Bumper Extension and Rear
- TFT Hurricane Remote-Control Monitor Package and Extend-A-Gun
- Two (2) 1 1/2" Cartridge Lay Preconnects
- One (1) 1 1/2" Preconnect, Front Bumper Extension
- Three (3) Triple Wheel Well Air Bottle Compartments
- Zico Hydraulic Ladder Rack
- Pike Pole and Suction Hose Storage, Ladder Rack
- David Clark Headset Assembly, Pump Panel
- Whelen LED Warning Light Package
- Whelen Scene Light Package
- Two (2) Whelen Pioneer Telescoping Flood Lights, One (1) Each Side Back of Cab
- Whelen Traffic Advisor Arrow Stick
- Command Light Knight Light Tower with Custom Brush Guard
- Federal Q2B Siren
- Diamond Grade Chevron Striping
- 10' 11" Overall Height
- 34' 5" Overall Length
- 213" Wheelbase
- 153" Cab to Axle
- 20,000 FAWR
- 27,000 RAWR
- 47,000 GVWR



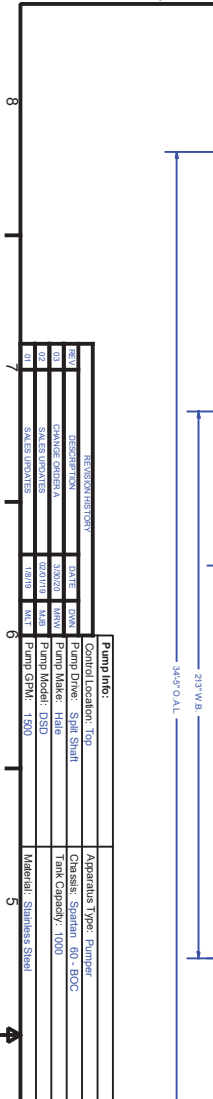
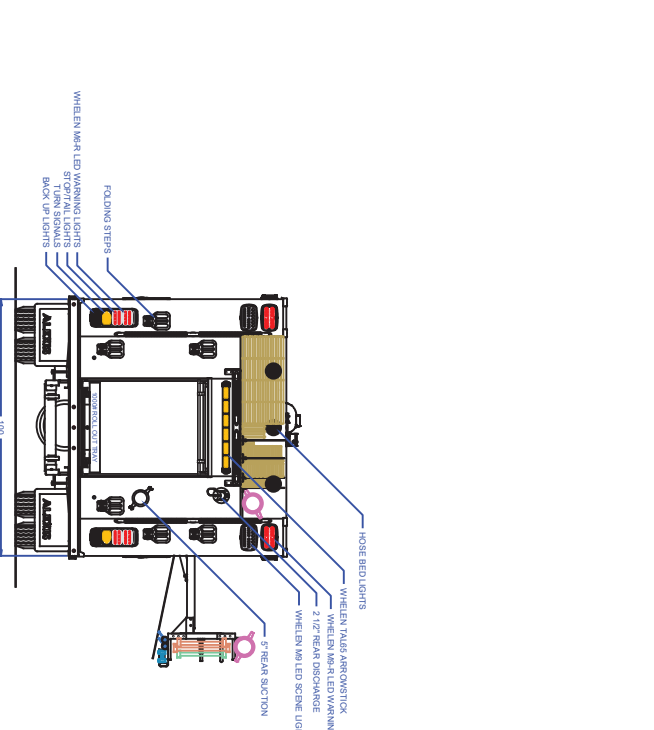
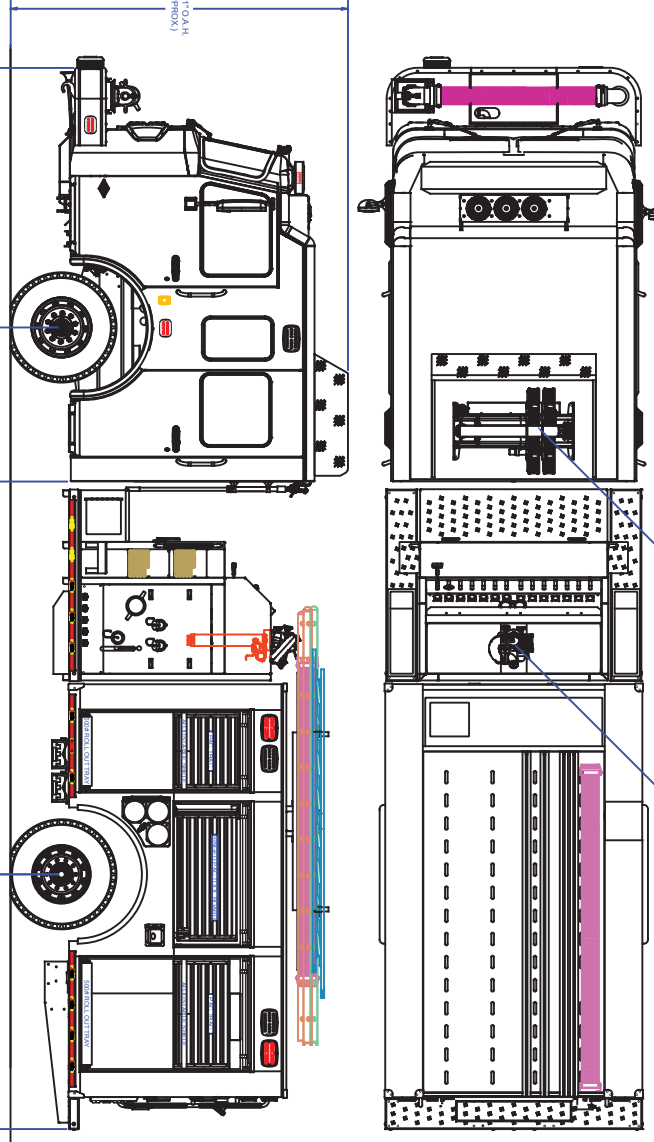
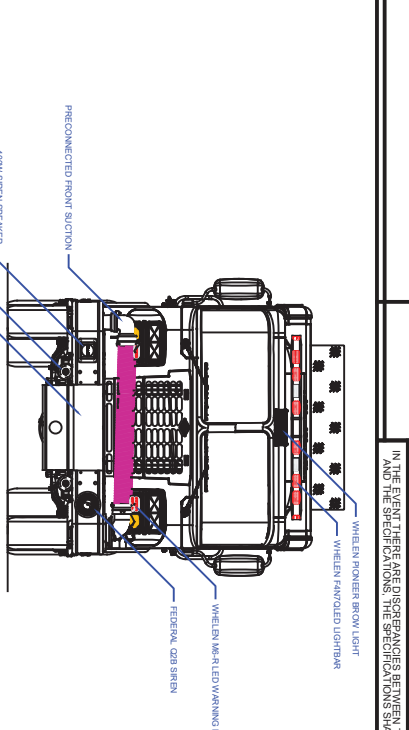
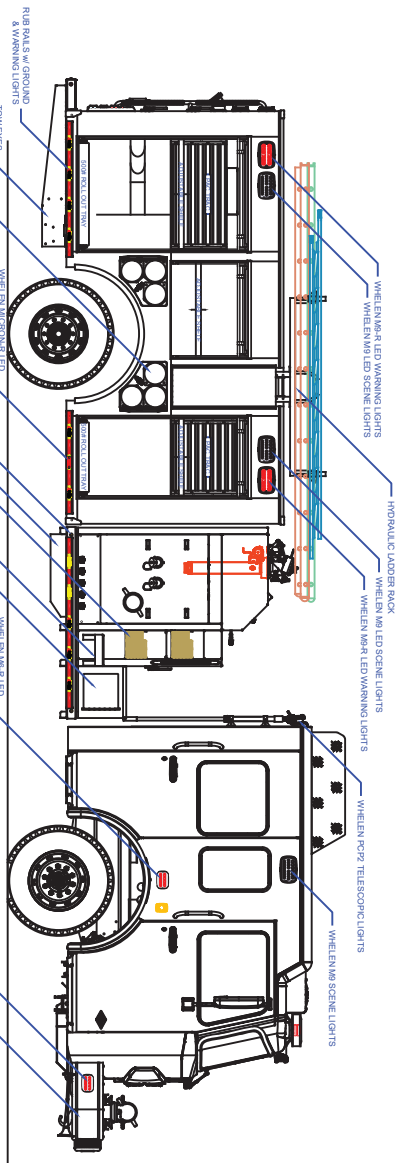
To view more photos and download spec sheet, please visit us at AlexisFire.com.

ARCOLA-1003

CUSTOMER APPROVAL SIGNATURE: _____

DATE: _____

IN THE EVENT THERE ARE DISCREPANCIES BETWEEN THE DRAWING AND THE SPECIFICATIONS, THE SPECIFICATIONS SHALL PREVAIL.



COMPARTMENT DIMENSIONS	
COMP #	DOOR OPENING SIZES
L1 & R1	36" WIDE X 82" HIGH X 12 1/2" DEEP
L2	54" WIDE X 25" HIGH X 12" DEEP
L3 & R3	35" WIDE X 25" HIGH X 12" DEEP
REAR	42" WIDE X 82" HIGH X 12 1/2" DEEP
REAR	38" WIDE X 46" HIGH X 38" DEEP

<p>UNLESS OTHERWISE SPECIFIED, DIMENSIONS ARE IN INCHES.</p> <p>LEGEND: A=ARM, B=BODY, C=CABIN, D=DOOR, E=ENGINE, F=FRONT, G=GROUND, H=HYDRA, I=INTERIOR, J=JUNCTION, K=KEY, L=LIGHT, M=MANUAL, N=NON, O=OPERATOR, P=PLATE, Q=QUANTITY, R=REAR, S=SIDE, T=TOP, U=UNDER, V=VERTICAL, W=WHEEL, X=X-AXIS, Y=Y-AXIS, Z=Z-AXIS.</p>	<p>ALEXIS FINE EQUIPMENT CO. P.O. BOX 518, ALEXIS, ILLINOIS 61412 PUMPER ARCOLA VOL. FIRE DEPT ARCOLA, IL P-X33</p>
--	--

1 2 3 4 5 6 7 8

A B C D