

FLATBED BRUSH TRUCK

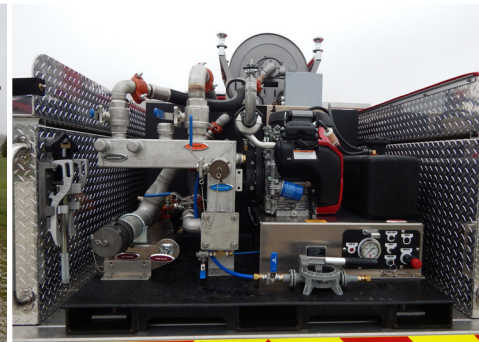
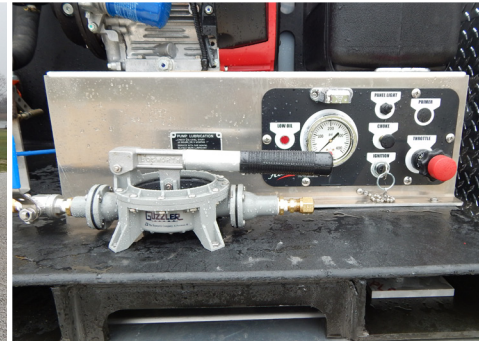


CITY OF WILTON FIRE DEPARTMENT
WILTON, IOWA



TECHNICAL SPECS

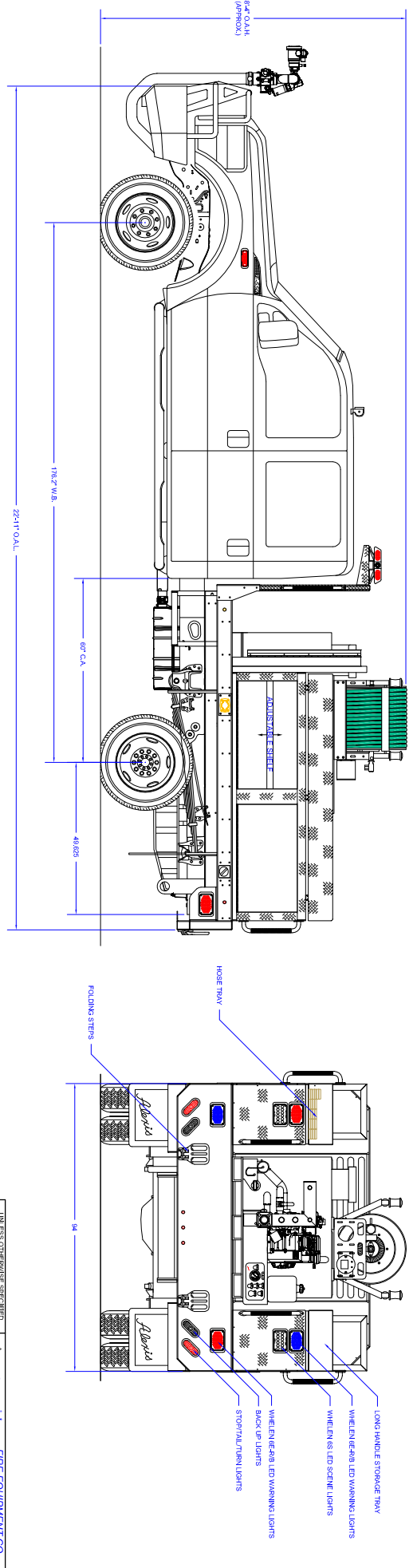
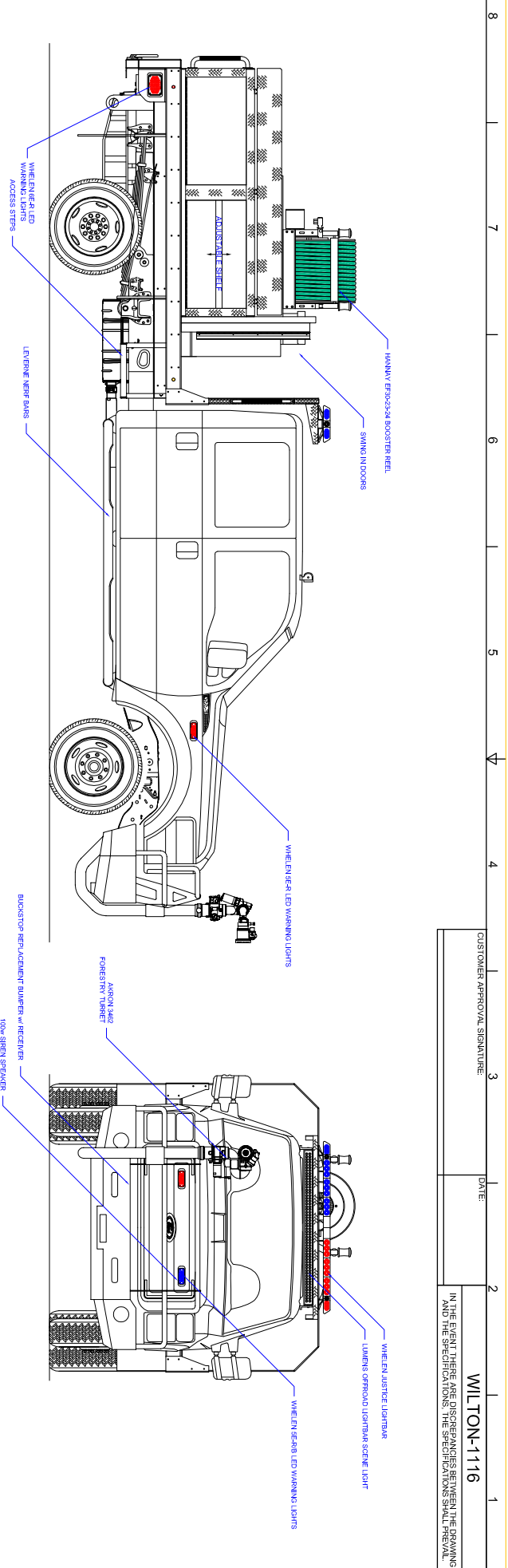
- Ford F-550 4-Door 4x4 DRW Chassis
- Ford 6.8L V-10, Gasoline Engine
- Ford 5-speed Automatic Transmission
- Heavy Duty 3/16" Aluminum Body
- 300-Gallon Poly Skid Tank
- Darley 1.5 AGE Pump with Honda 20-HP Gas engine
- One (1) 1" Booster line with 10-ft of hose, walkway area
- One (1) 1 1/2" Discharge, rear
- One (1) Akron front bumper turret with joystick control from cab interior
- One (1) Hannay Electric Booster Reel with 150-ft of 1" hose
- Luverne stainless steel Nerf bars
- Buckstop brush guard with integrated Warn 12,000 lb Winch
- Two (2) compartments with two (2) drop down doors each, one (1) each side
- One (1) Hose tray, left side compartment top
- One (1) Open storage tray for long handles tools, right side compartment top
- Progressive Dynamics on-board battery charger
- Kussmaul Super Auto Eject 120-volt shoreline connection
- Floor mounted console for emergency switches, cab
- Code 3 Electronic Siren with 100-watt Code 3 speaker
- Two (2) Whelen LED Scene lights, one (1) each side
- Off Road LED lightbar, cab roof
- Whelen LED Warning Light Package
- Diamond Grade Chevron pattern striping, rear
- 8' 4" Overall height • 5,600 FAWR
- 22' 11" Overall length • 13,660 RAWR
- 176.2" Wheelbase • 18,000 GVWR
- 60" Cab to Axle



THANK YOU TO THE CITY OF WILTON FIRE DEPARTMENT FOR THE PURCHASE OF THIS UNIT.

To view more photos and download flyer, please visit us at AlexisFire.com.





CUSTOMER APPROVAL SIGNATURE: _____ DATE: _____

WILTON-1116

IN THE EVENT THERE ARE DISCREPANCIES BETWEEN THE DRAWING AND THE SPECIFICATIONS, THE SPECIFICATIONS SHALL PREVAIL.

COMPARTMENT DIMENSIONS	
DOOR OPENING SIZES	
	35" WIDE X 19" HIGH X 17" DEEP
	35" WIDE X 19" HIGH X 17" DEEP
	35" WIDE X 19" HIGH X 17" DEEP

PUMP INFO	
Control Location:	Rear
Pump Drive Name:	None
Pump Make:	SHI - GAS
Pump Model:	
Pump GPM:	

APPARATUS TYPE: BRUSH TRUCK	
Chassis:	Ford 4-Door
Tank Capacity:	300
Material:	Aluminum

COMP #	
LT & LT	
RT & RT	

UNLESS OTHERWISE SPECIFIED, DIMENSIONS ARE IN INCHES (DIMENSIONS IN METRIC ARE APPROXIMATE). THIS COPY IS THE PROPERTY OF FIRE EQUIPMENT CO. AND THE RIGHT OF REPRODUCTION HEREIN IS RESERVED. ANY UNAUTHORIZED REPRODUCTION IS PROHIBITED.

Fire Equipment Co.
P.O. BOX 549 ALEXIS, ILLINOIS 62412

BRUSH TRUCK
WILTON FIRE DEPT
WILTON, IA

SIZE: 30000
30" x 11' x 7'

CONTRACT #: SK851

SHEET 1 OF 2