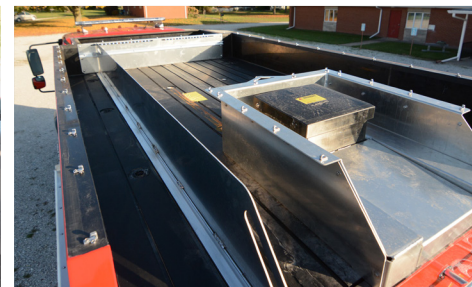


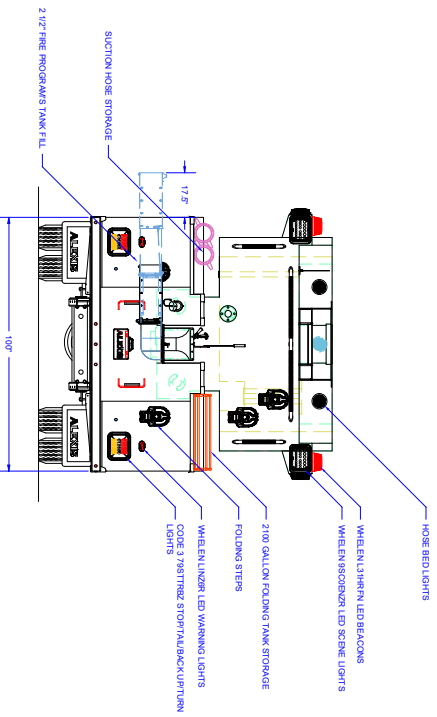
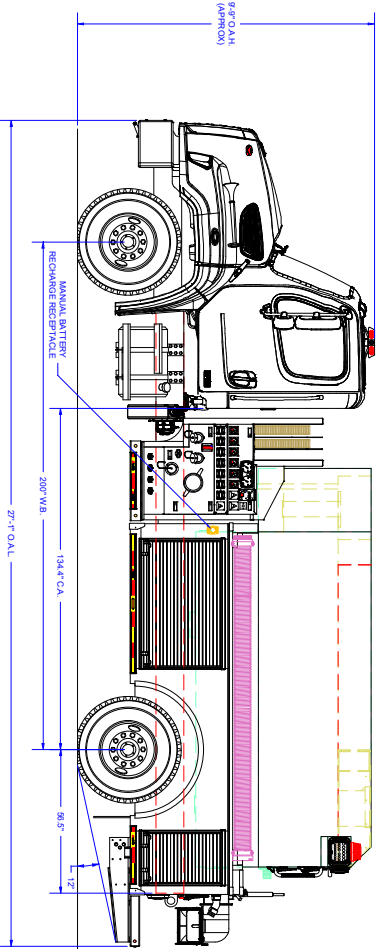
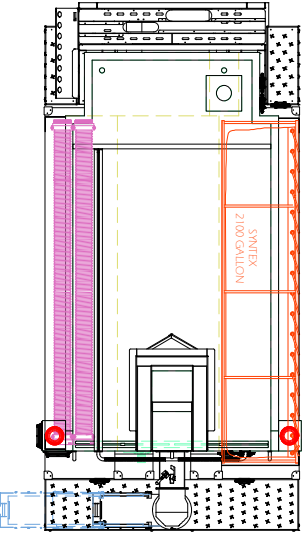
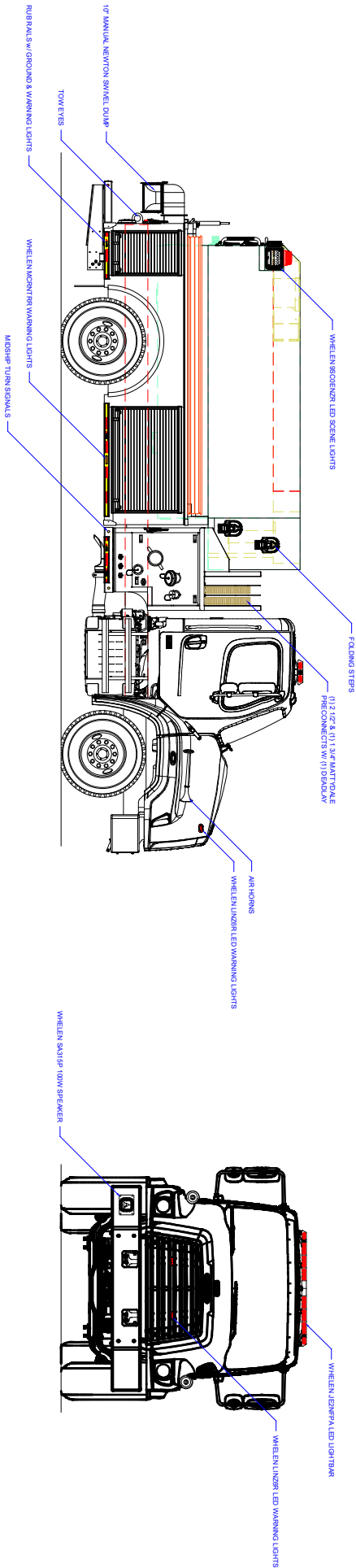
2000-GALLON TANKER #2513



TECHNICAL SPECIFICATIONS

- Freightliner 114SD Chassis
- 450 HP Cummins L9 Engine
- Allison 3000 EVS Automatic Transmission
- Heavy Duty Stainless-Steel Body and Sub-Frame
- Two (2) Person Cab
- Stainless-Steel Intermediate Pump Module
- Waterous 1250 gpm PTO Pump
- Trident Air Prime System
- Two (2) 6" Intakes, One (1) Each Side
- One (1) 2½" Gated Intake, Left Side
- One (1) 2½" FirePrograms Rear Tank Fill
- Two (2) 2½" Discharges, Left Side
- One (1) 2½" Discharge, Right Side
- One (1) 3" Discharge, Right Side Adapted to 5" Storz
- Two (2) 1½" Mattydale Preconnects, One (1) Deadlay
- One (1) 10" Newton Stainless-Steel Manual Swivel Dump, Rear
- 2000-Gallon Poly Tank
- Six (6) Folding Steps, Two (2) Ahead Right Side, Four (4) Rear
- Wetside Hosebed with Rear Fill Tower
- ROM Satin Finish Roll-Up Doors
- Progressive Dynamics Battery Charger with Kussmaul 120V 20A Super Auto Eject
- Whelen Warning and Scene Light Package
- Two (2) 10' x 6" Hard Suction Hoses, On Left Compartment Tops
- One (1) 2100-Gallon Folding Tank, On Right Compartment Tops
- 10' 1" Overall Height
- 27' 6" Overall Length
- 200" Wheelbase
- 134.4" Cab to Axle
- 16,000 FAWR
- 30,000 RAWR





COMPARTMENT DIMENSIONS

COMP #	DOOR OPENING SIZES	MATERIAL
11 & R1	48" WIDE X 27" HIGH X 28" DEEP	12x8 R2
12 & R2	18" WIDE X 27" HIGH X 28" DEEP	12x8 R2

REVISION HISTORY	DATE	BY	DESCRIPTION
1			

DATE	BY	DESCRIPTION
1/24/22	J. HENNING	1596XN
2/1/21	J. HENNING	1596XN

CONTROL LOCATION	APPARATUS TYPE	TANK CAPACITY
Under Tank	Tanker	2000
PTO	Welded	2-Door
Welded	Welded	2-Door
CX Struts	Stainless Steel	

PUMP INFO:	CONTROL LOCATION:	APPARATUS TYPE:	TANK CAPACITY:
Under Tank	Under Tank	Tanker	2000
PTO	PTO	Welded	2-Door
Welded	Welded	Welded	2-Door
CX Struts	CX Struts	Stainless Steel	

COMP #	DOOR OPENING SIZES	MATERIAL
11 & R1	48" WIDE X 27" HIGH X 28" DEEP	12x8 R2
12 & R2	18" WIDE X 27" HIGH X 28" DEEP	12x8 R2

ALEXIS FIRE EQUIPMENT CO.
P.O. BOX 549, ALEXIS, ILLINOIS 61412

WHITE MOUNTAIN APACHE F & R
WHITTEVER, AZ

SIZE SCALE: DRAWING: T-155
DATE: 1/27/21
CONTRACT #: 2513 SHEET 1 OF 2