

SUPER TANKER

WASHINGTON COMM. FIRE PROTECTION DISTRICT
WASHINGTON, MISSOURI



ALEXIS



THANK YOU TO THE WASHINGTON COMM. FIRE PROTECTION DISTRICT FOR THE PURCHASE OF THIS UNIT.

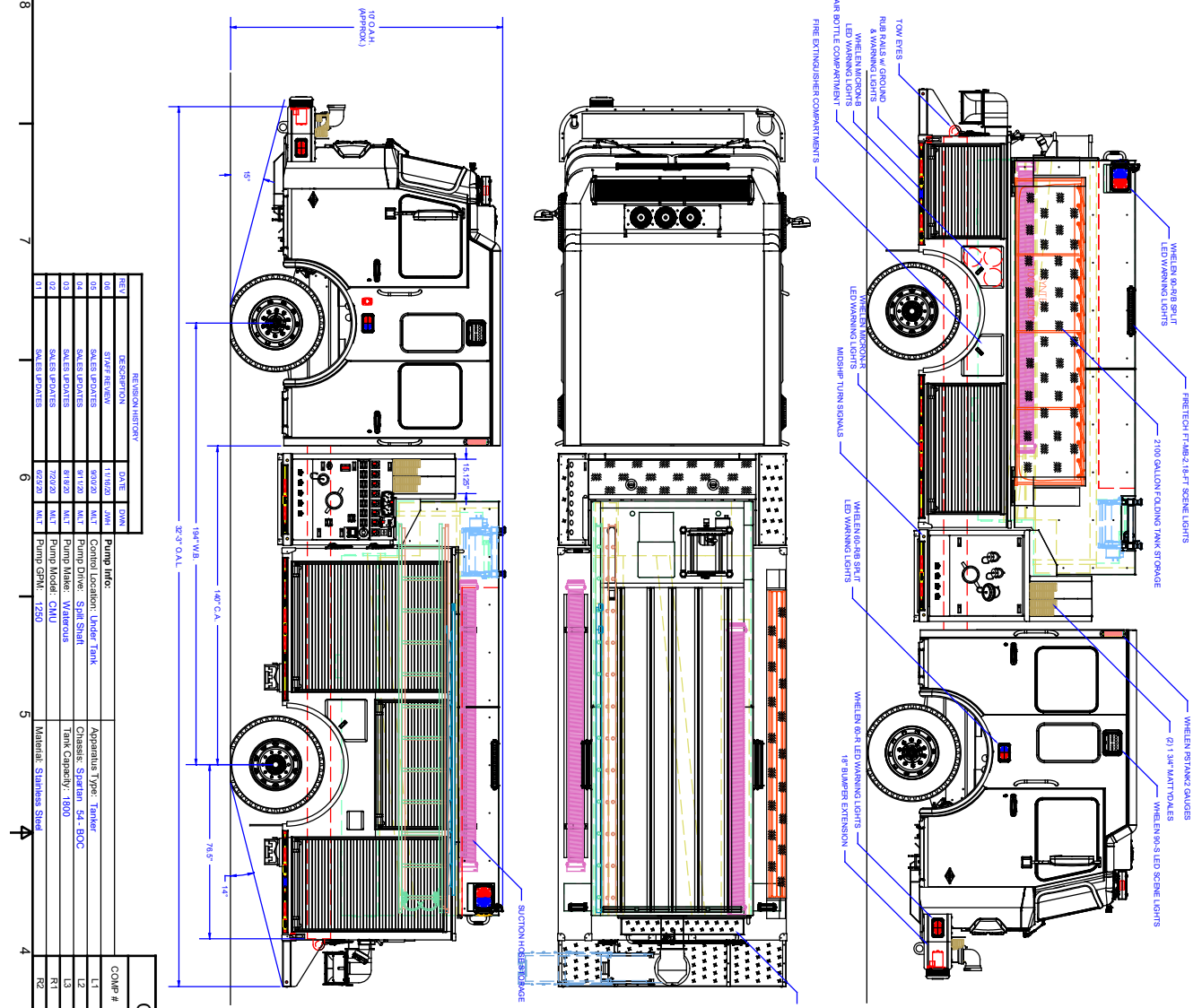


TECHNICAL SPECIFICATIONS

- Spartan Metro Star MFD 10" Raised Roof Chassis
- Cummins L9 450-HP Diesel Engine
- Allison 3000 EVS Automatic Transmission
- Heavy Duty Stainless-Steel Body & Subframe
- Intermediate Side Control Pump Module
- ROM Painted Roll-up Doors
- On Spot Automatic Tire Chairs
- One (1) EMS Compartment w/ Adjustable Shelves
- Waterous CM 125 Two Stage 1250 GPM Pump
- Trident Air Auto Prime
- 1800-Gallon Wetside Poly Tank
- Three (3) 2 1/2" Discharges, Two (2) Right and One (1) Rear
- One (1) 3" Discharge, Right Side
- One (1) 2 1/2" Gated Suction, Left Side
- 5" Front Suction Intake
- One (1) 2 1/2" Preconnect, Front of Hosebed & One (1) 1 1/2" Front Bumper Preconnect
- Two (2) 1 1/2" Mattydale Preconnects
- Hannay 1" Booster Reel, Front of Hosebed
- One (1) 2.5" Tank Fill, Rear
- Newton 10" Manual Swivel Dump w/ 36" Extension
- Whelen LED Warning Light Package
- FireTech LED Scene Light Package
- Britax Stalk Marker Lights
- Audiovox Color Observation Back-up Camera w/ 7" Monitor
- Progressive Dynamics Battery Charger w/ Viair Compressor
- One (1) Triple Air Bottle Wheel Well Storage, Right Side
- Two (2) Fire Extinguisher Wheel Well Compartments, One (1) Each Side
- Zico Hydraulic Folding Tank Bracket, Right Side Compartment Top
- Ladder Storage, Left Side Through the Tank
- Suction Hose Storage, Left Side Compartment Top and Right Side Through Tank
- Diamond Grade Chevron Striping, Rear
- 10' Overall Height
- 32' 3" Overall Length
- 194" Wheelbase
- 140" Cab to Axle
- 20,000 FAWR
- 31,500 RAWR
- 51,500 GVWR



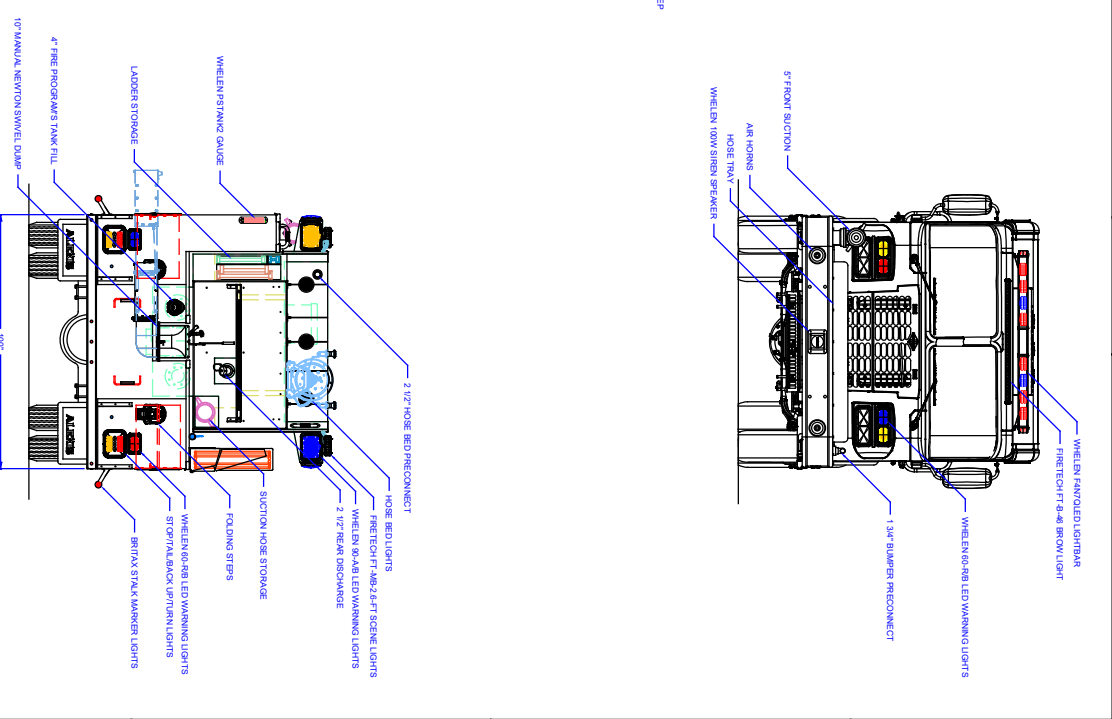
To view more photos and download spec sheet, please visit us at AlexisFire.com.



REV#	DESCRIPTION	DATE	DWG
01	REVISION HISTORY		
02	STAFF REVIEW	11/10/20	JAM
03	SALES UPDATES	8/20/20	WLT
04	SALES UPDATES	8/11/20	WLT
05	SALES UPDATES	8/18/20	WLT
06	SALES UPDATES	7/20/20	WLT
07	SALES UPDATES	8/20/20	WLT

COMP #	DOOR OPENING SIZES	
1	55" WIDE X 62" HIGH X 122 28" DEEP	
2	54" WIDE X 25" HIGH X 28" DEEP	
3	39" WIDE X 62" HIGH X 122 28" DEEP	
4	55" WIDE X 27" HIGH X 28" DEEP	
5	39" WIDE X 27" HIGH X 28" DEEP	

COMPARTMENT DIMENSIONS



UNLESS OTHERWISE SPECIFIED:
 DIMENSIONAL TOLERANCES ARE NOT TO EXCEED:
 FRACTIONAL ± 1/16" ANGULAR ± 0.1°
 HOLE POSITIONING ± 0.010" PER DIA.
 THE COPYRIGHT OF THIS DRAWING AND DESIGN AND THE RIGHT OF REPRODUCTION THEREOF ARE RESERVED BY ALEXIS FIRE EQUIPMENT CO.
 WA-2020-03

ALEXIS FIRE EQUIPMENT CO.
 P.O. BOX 540, ALEXIS, LINCOLN 68412

SUPER TANKER
 WASHINGTON FIRE DEPT
 WASHINGTON, MO

SIZE SCALE: 1/2" = 1'-0"
 CONTRACT # 2420 SHEET 1 OF 2