

3000 GALLON TANKER #2545

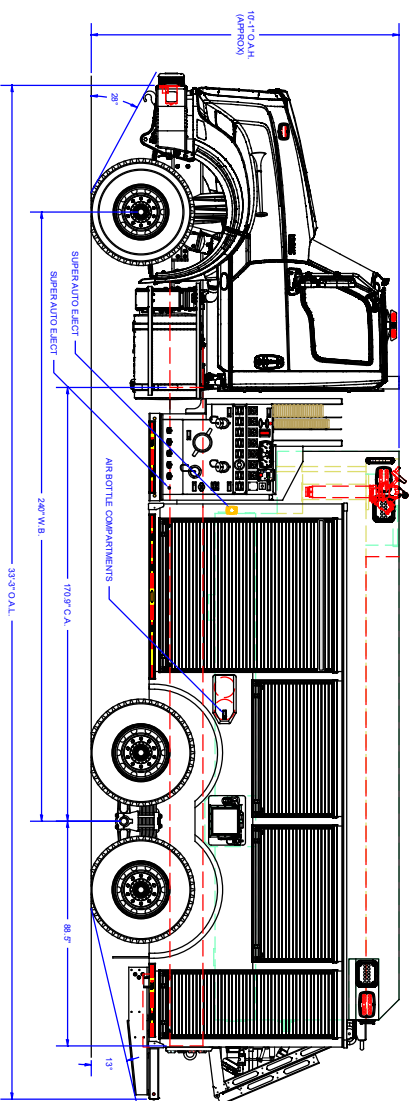
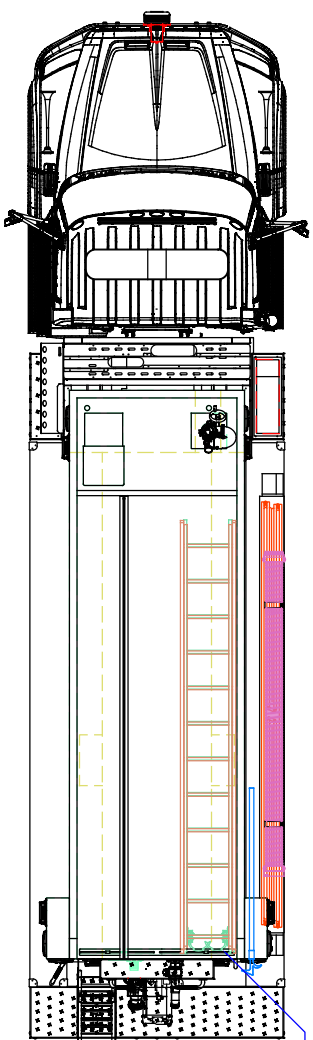
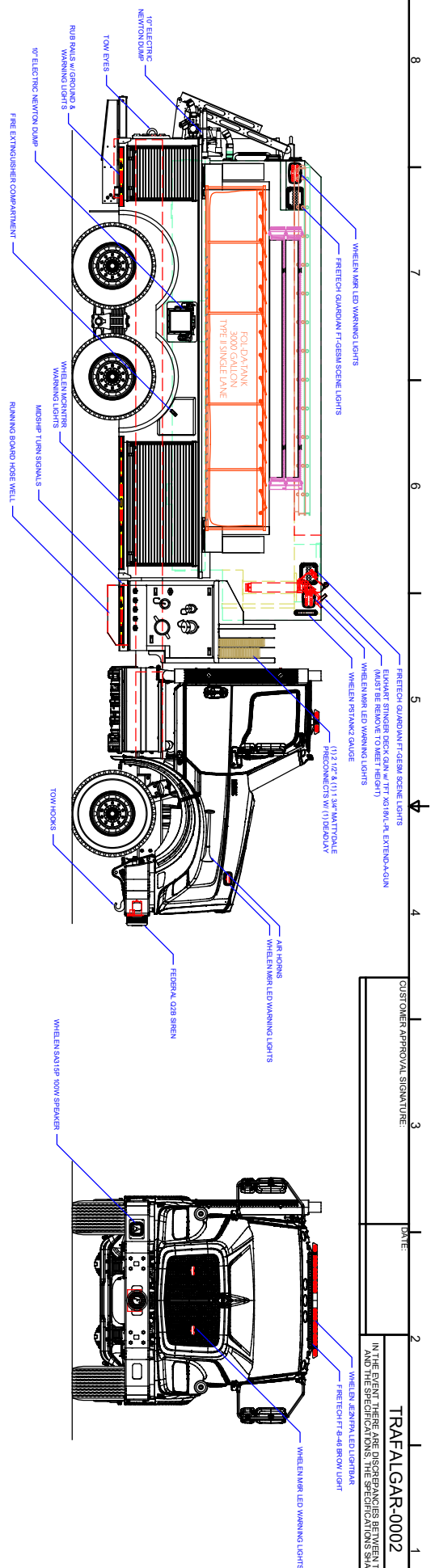


TECHNICAL SPECIFICATIONS

- International HX620 2-Door Cab Chassis
- Cummins 500 HP X15 Engine
- Allison 4500 EVS Automatic Transmission
- Heavy Duty Stainless Steel Body and Stainless Steel Subframe
- Intermediate Stainless Pump Module with Stainless Steel Subframe
- Free Floating Hose Well for 25' of 5" Hose, Right Side
- Watrous CXVC20 1500 GPM Single Stage Pump
- Trident Air Prime System
- FRC Pump Boss Pressure Governor
- FRC TankVision Water Tank Level Gauge with Three (3) Whelen PSTANK Strip Lites
- Two (2) 6" Intakes, One (1) Each Side
- Two (2) 2½" Gated Intakes, One (1) Each Side
- Two (2) 2½" Discharges, Left Side and One (1) 2½" Discharge, Right Side
- One (1) 2½" Discharge, Rear Left Side
- One (1) 4" Discharge Adapted to 5" Storz, Right Side
- One (1) 3" Discharge Dunnage Area with Elkhart Stinger Deck Gun and TFT Extenda-Gun
- One (1) 1½" and One (1) 2½" Mattydale Preconnects with One (1) Deadlay Hose Bed
- One (1) Booster Reel Rear Below Dump with 100' of 1" Booster Hose
- One (1) Dual Air Bottle Wheel Well Compartment
- One (1) Fire Extinguisher Wheel Well Compartment
- ROM Painted Roll Up Doors
- Zico Hydraulic Folding Tank Bracket, Right Side
- Suction Hose Storage, Right Side on Fol-Da-Tank Rack
- Ladder Storage in Hose Bed, Right Side
- Stainless Steel Rear Access Ladder with Flip Down Step, Left Side
- 3000 Gallon Poly Wetside Tank with Wetside Hose Bed & Front Fill Tower
- One (1) 2½" FirePrograms Tank Fill, Rear Right Side
- One (1) 4" Butterfly Valve Tank Fill with 5" Storz Elbow, Rear Left Side
- Three (3) 10" Newton Stainless Steel Electric Dumps with 18" Electric Extensions, One (1) Each Side and One (1) Rear
- 12 Volt Electrical System with NFPA Compliant Warning Light Package
- Progressive Dynamics Battery Charger with Viar Compressor, L1 Compartment
- Kussmaul 20 Amp Super Auto-Eject 120V Shoreline Connection, Left Front Body Post
- Whelen LED Warning Lights
- Whelen 200W Siren and 100W Speaker
- Federal Q2B Siren
- Six (6) FireTech HiViz Guardian GESM LEF Scene Lights, Two (2) Each Side and Two (2) Rear
- One (1) Firetech HiViz 46" LED Brow Light
- One (1) 24' 2-Section Ladder, Two (2) 10' Lengths of 6" Suction Hose and One (1) 3000 Gallon Fol-Da-Tank
- 10'-1" Overall Height
- 33'-3" Overall Length
- 240" Wheelbase
- 170.90" Cab to Axle
- 18,000 FAWR
- 46,000 RAWR
- 64,000 GVWR



IN THE EVENT THERE ARE DISCREPANCIES BETWEEN THE DRAWING AND THE SPECIFICATIONS, THE SPECIFICATIONS SHALL PREVAIL.



COMPARTMENT DIMENSIONS		FIRE EQUIPMENT CO.	
UNITS ORBENBEE SPECIFIED DIMENSIONS ARE IN INCHES DIMENSIONS ARE IN MILLIMETERS		ALEXIS	
DOOR OPENING SIZES	TOTAL WIDTH 10 1/2" 267 mm TOTAL HEIGHT 10 1/2" 267 mm INTERNAL WIDTH 10 1/2" 267 mm INTERNAL HEIGHT 10 1/2" 267 mm PROTRUSION .50" 13 mm	P.O. BOX 560 ALEXIS, ILLINOIS 61412 TANKER	
COMP #			

