

# TOP CONTROL EQUALIZER PUMPER

TIMBER HOLLIS FIRE PROTECTION DISTRICT / GLASFORD, ILLINOIS



# ALEXIS



THANK YOU TO THE TIMBER HOLLIS FIRE PROTECTION DISTRICT FOR THE PURCHASE OF THIS UNIT.



## TECHNICAL SPECIFICATIONS

- Spartan Metro Star MFD 10" Raised Roof Chassis
- Cummins L9 450 HP Diesel Engine
- Allison 3000 EVS Automatic Transmission
- Heavy Duty Stainless-Steel Body & Subframe
- Six (6) Person Cab Seating w/ Five (5) SCBA Seats
- Waterous CXVC20 1500-GPM Split Shaft Pump
- 1000-Gallon Poly Tank w/ 20-Gallon Foam Tank
- ROM Painted Roll-up Doors
- Two (2) 6" Suctions w/ TFT Ball Intake Valves
- Three (3) 2 1/2" Discharges, Two (2) Left and One (1) Right
- Three (3) 3" Discharges, One (1) Right, One (1) Rear, One (1) Deck Gun
- One (1) 2 1/2" Gated Suction, Left Side
- 5" Front Suction
- Waterous Aquis 1.5 Foam System
- Akron Apollo Monitor w/ TFT Manual Extend-a-Gun
- Two (2) 1 1/2" Mattydale Preconnects
- One (1) 1 1/2" Front Bumper Preconnect
- Three (3) Dual Air Bottle Wheel Well Compartments, One (1) Left and Two (2) Right
- Ladder/Suction Hose Storage, Through the Tank
- One (1) 2 1/2" Tank Fill, Rear
- Whelen LED Warning Light Package
- Whelen LED Traffic Advisor Arrow Stick
- Whelen Electronic Siren w/ Cast Products 100-watt Speaker
- FireTech LED Scene Light Package
- Two (2) Fire Research Telescopic LED Flood Lights, Back of Cab
- FRC inView 360° Camera System w/ Pump Panel Monitor
- FireCom Wireless Intercom System
- Diamond Grade Chevron Striping, Rear
- 10' 1" Overall Height
- 33' 10" Overall Length
- 199" Wheelbase
- 145" Cab to Axle
- 21,500 FAWR
- 31,000 RAWR
- 52,500 GVWR

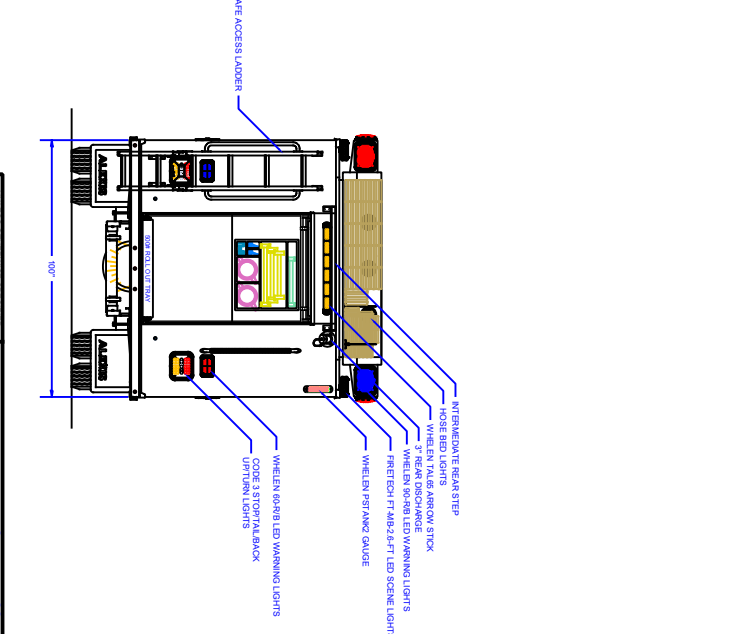
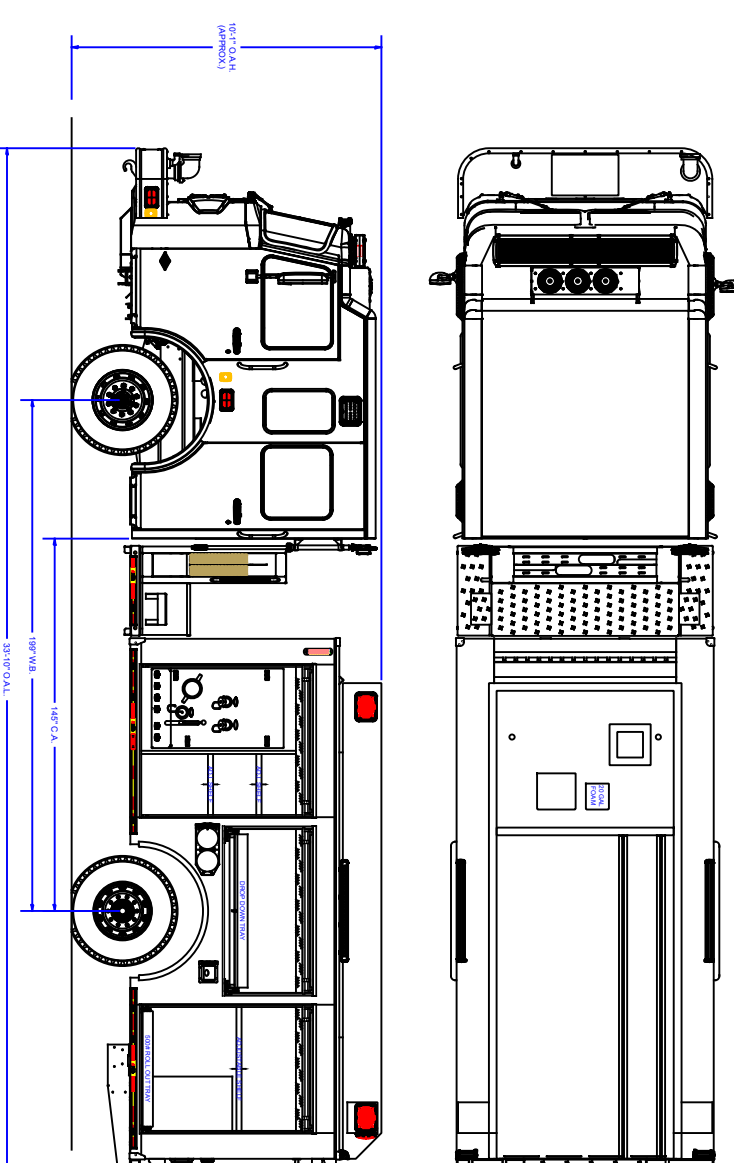
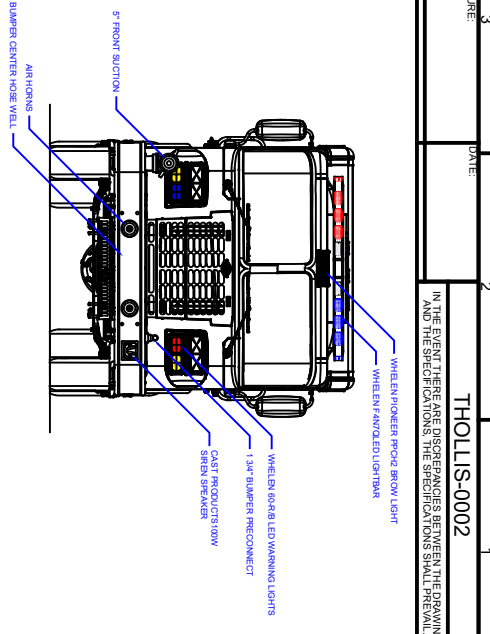
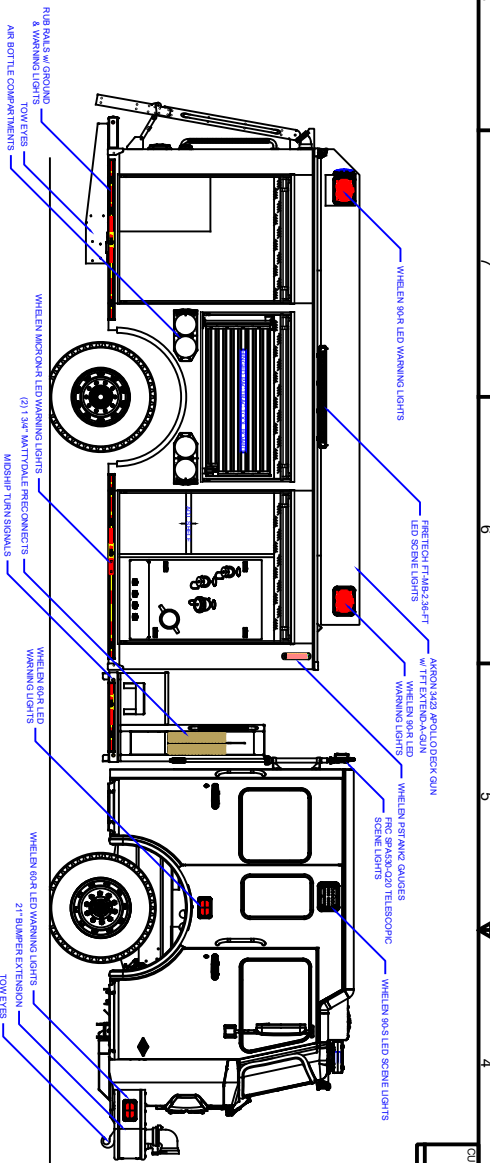


To view more photos and download spec sheet, please visit us at [AlexisFire.com](http://AlexisFire.com).

CUSTOMER APPROVAL SIGNATURE: \_\_\_\_\_  
 DATE: \_\_\_\_\_

**THOLLS-0002**

IN THE EVENT THERE ARE DISCREPANCIES BETWEEN THE DRAWING AND THE SPECIFICATIONS, THE SPECIFICATIONS SHALL PREVAIL.



### COMPARTMENT DIMENSIONS

COMP #	DOOR OPENING SIZES
L1 & R1	57" WIDE X 62" HIGH X 28" DEEP
L2 & R2	63" WIDE X 30" HIGH X 28" DEEP
L3 & R3	48" WIDE X 62" HIGH X 28" DEEP
REAR	41" WIDE X 81" HIGH X 127/8" DEEP

Pump Info:	
Control Location:	Top
Pump Drive:	Stair Shaft
Pump Make:	Waterous
Pump Model:	CMX120
Material:	Stainless Steel

REV	DESCRIPTION	DATE	BY	CHK
01	SALES UPDATE	2/22/20	XXXX	

**ALEXIS** FIRE EQUIPMENT CO.

P.O. BOX 518, ALEXIS, ILLINOIS 61412

### TOP MOUNT EQUALIZER

TIMBER HOLLIS FIRE PROT DIST

GLAFC-60RD, ILL.

SIZE: 1/2" = 1'

SHEET: 1 OF 2

UNLESS OTHERWISE SPECIFIED, DIMENSIONS ARE IN INCHES. DIMENSIONS ARE NOT GOVERNATIVE. CONTACT: 618.436.8516. ALEXIS, ILLINOIS, USA.

The copyright of this drawing and design is held by Alexis Fire Equipment Co. and is subject to Alexis Fire Equipment Co. CONTRACT # \_\_\_\_\_