

500 GPM TANKER #2528



TECHNICAL SPECIFICATIONS

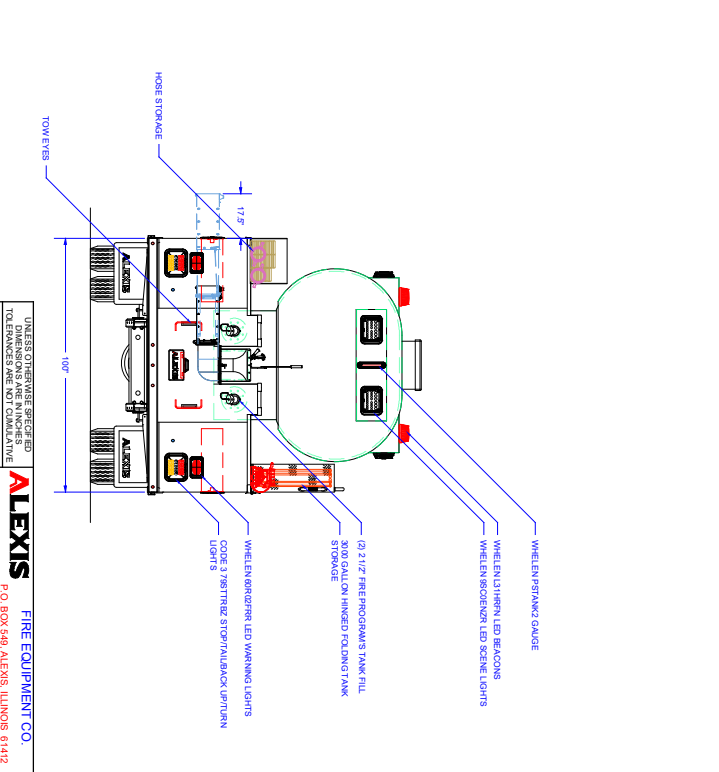
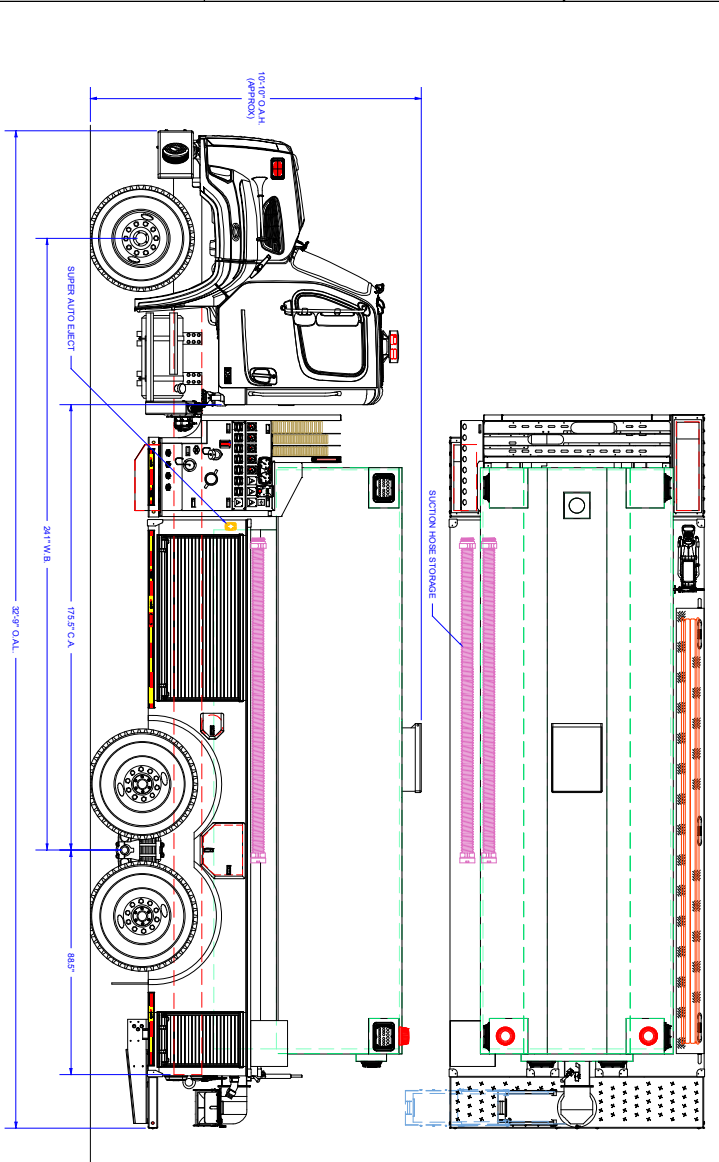
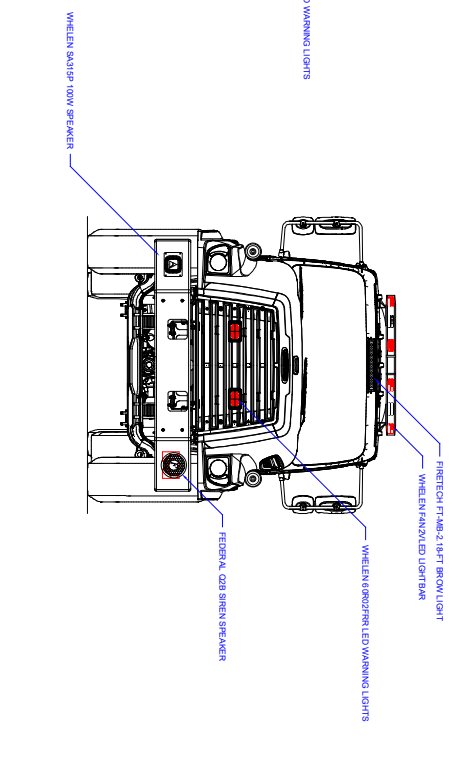
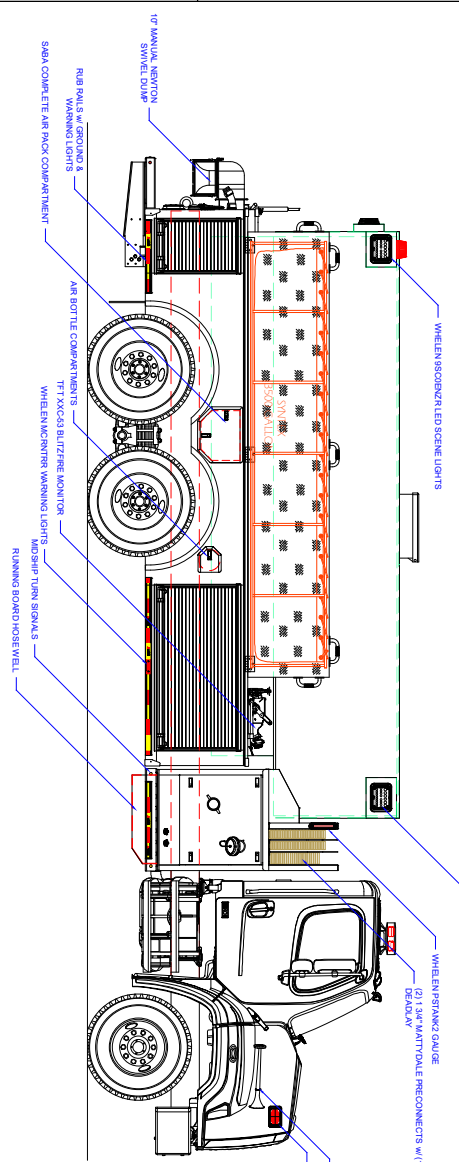
- Freightliner 108 SD Chassis
- Cummins 400 HP L9 Engine
- Allison 3000 EVS Automatic Transmission
- Heavy Duty Stainless-Steel Body and Sub-Frame
- Two (2) Person Cab
- Stainless-Steel Pump Module
- Darley HM 500 GPM PTO Pump
- Trident Air Prime System
- FRC Pump Boss Pressure Governor & Monitoring System
- Two (2) 4" Intakes, One (1) Each Left and Right Side
- Two (2) Free Floating Hose Wells, One (1) Each Left and Right Side Running Boards
- One (1) 2½" Discharge, Left Side
- One (1) 3" Discharge 3" NST x 5" Storz, Right Side
- Two (2) 1½" and One (1) 2½" Mattydale Preconnects
- Two (2) Single Wheel Well Air Bottle Compartments, One (1) Each Side Ahead of Rear Wheels
- Two (2) SCBA Complete Air Pack Wheel Well Compartments, One (1) Each Side Between Rear Wheels
- ROM Roll-Up Doors
- 3,500 Folding Tank Bracket, Right Side
- 3,500 Gallon Elliptical Stainless Steel Tank
- Two (2) 2½" FirePrograms Rear Tank Fills
- One (1) 10" Newton Stainless-Steel Manual Swivel Dump, Rear
- Whelen Warning and Scene Light Package
- Fire Tech LED Brow Light
- Progressive Dynamics Charger w/ Viair Compressor
- Kussmaul Super Auto Eject Shoreline Connection
- Rub Rails w/ Under Carriage Lighting
- Whelen 200W Siren and 100W Speaker
- 10' 10" Overall Height
- 32' 9" Overall Length
- 241" Wheelbase
- 175.5" Cab to Axle
- 18,000 FAWR
- 44,000 RAWR
- 62,000 GVWR



CUSTOMER APPROVAL SIGNATURE: _____ DATE: _____

SCPIO TWP-1002

IN THE EVENT THERE ARE DISCREPANCIES BETWEEN THE DRAWING AND THE SPECIFICATIONS, THE SPECIFICATIONS SHALL PREVAIL.



COMPARTMENT DIMENSIONS

REV	DESCRIPTION	DATE	DWN	PUMP MAKE	PUMP GPM
1	REVISION HISTORY			Pump Model: HMI	500

Control Location	Apparatus Type	Chassis	Tank Capacity	Material
Under Tank	Tanker	Freightliner - 2-Door	3500	Stainless Steel

COMP #	DOOR OPENING SIZES	UNLESS OTHERWISE SPECIFIED
L13 R1	63" WIDE X 27" HIGH X 28" DEEP	DECIMAL: #10/32 ANGULAR: #10/32
L23 R2	18" WIDE X 27" HIGH X 28" DEEP	TOLERANCES ARE NOT DIMENSIONAL

ALEXIS FIRE EQUIPMENT CO.
 P.O. BOX 549, ALEXIS, ILLINOIS 61412

ELLIPTICAL TANKER
 SCPIO TOWNSHIP FIRE DEPT.
 LAPORE, IN

SIZE SCALE: DRAWING: T-L61
 D 1/2" = 1'

CONTRACT # 2528 SHEET 1 OF 2