

# 4000-GALLON FOAM TENDER

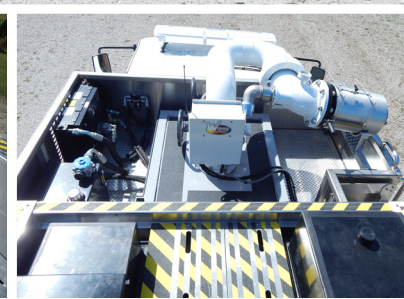
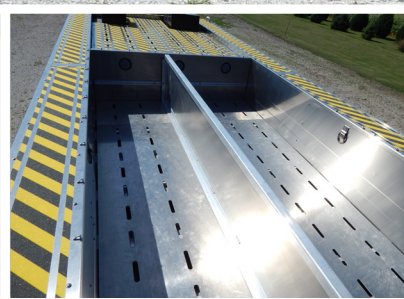
REFINERY TERMINAL FIRE COMPANY / CORPUS CHRISTIE, TEXAS



# ALEXIS



THANK YOU TO THE REFINERY TERMINAL FIRE COMPANY FOR THE PURCHASE OF THIS UNIT.



## TECHNICAL SPECIFICATIONS

- Freightliner 114SD 2-Door Tandem Axle Chassis
- Detroit DD13 12.8L 505-HP Diesel Engine
- Allison 4000 EVS Automatic Transmission
- Heavy Duty Stainless-Steel Body & Subframe
- ROM Roll-up Doors
- 4000-Gallon Poly Foam Tank
- Three (3) 2 1/2" Discharges, One (1) Left and Two (2) Right
- One (1) 6" Discharge, Right Side
- 2 1/2" Front Bumper Foam Concentrate Preconnect
- FoamPro AccuMax Foam Proportioning System
- FoamPro Power-Fill Tank Refill System
- 8" Deck Gun Piping
- One (1) 2 1/2" Tank Fill, Rear
- Williams Ambassador II Wireless Remote Control Monitor Package
- Kochek Foam Pick-up Hoses
- Two (2) Dual Air Bottle Storage Compartments, One (1) Each Side
- Wheel Chock Storage Compartment, Left Side
- PowerMax Battery Charger w/ Viair Compressor
- Blue Seas Sure Eject 120V Shoreline Connection
- Floor Mounted Console for Emergency Switches w/ Map/Binder Storage
- Whelen 55" LED Lightbar
- Fenix LED Warning Light Package
- Whelen Electronic Siren w/ 100-watt Speaker
- Fire Research LED Scene Light Package
- Fire Research 360° Camera System w/ 7" Monitor
- Suction Hose Storage, Rear Upper Left Side Compartment
- Diamond Grade Chevron Striping, Rear
- 12' 7" Overall Height
- 39' 4" Overall Length
- 298" Wheelbase
- 232.4" Cab to Axle
- 22,000 FAWR
- 52,000 RAWR
- 74,000 GVWR



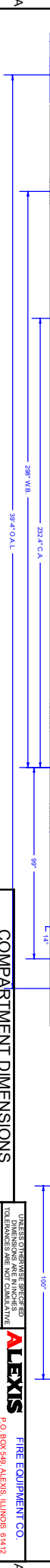
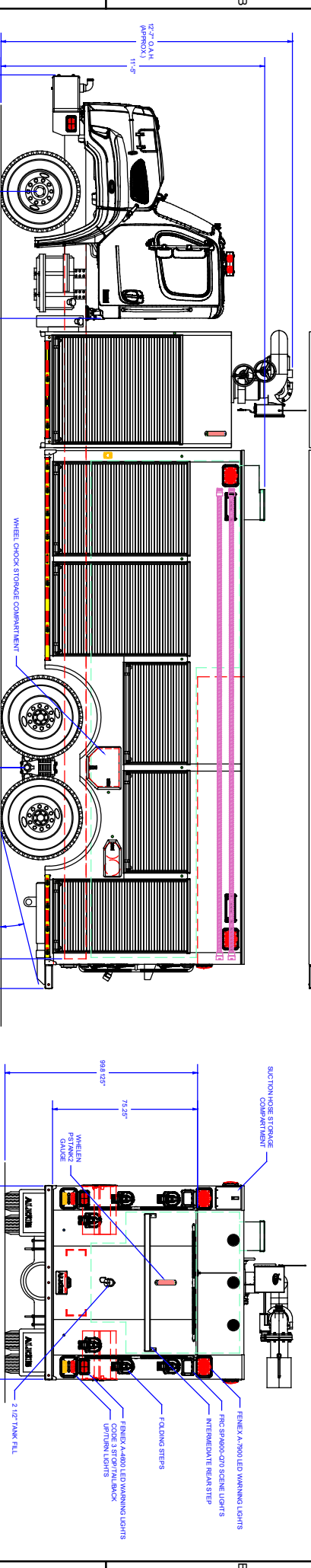
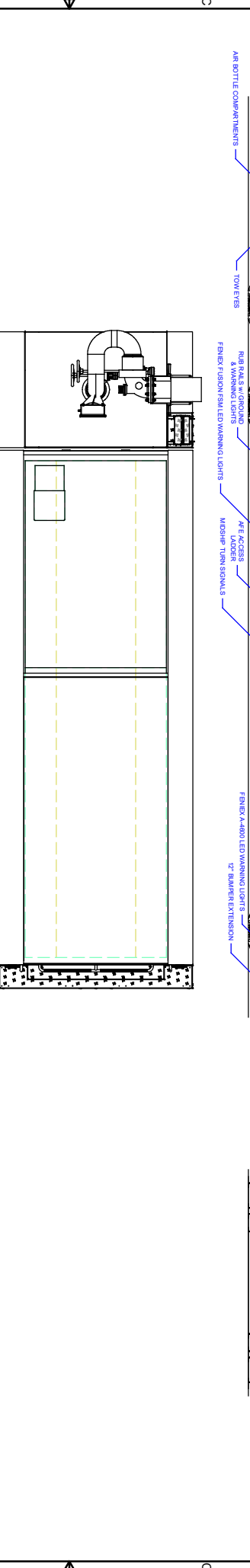
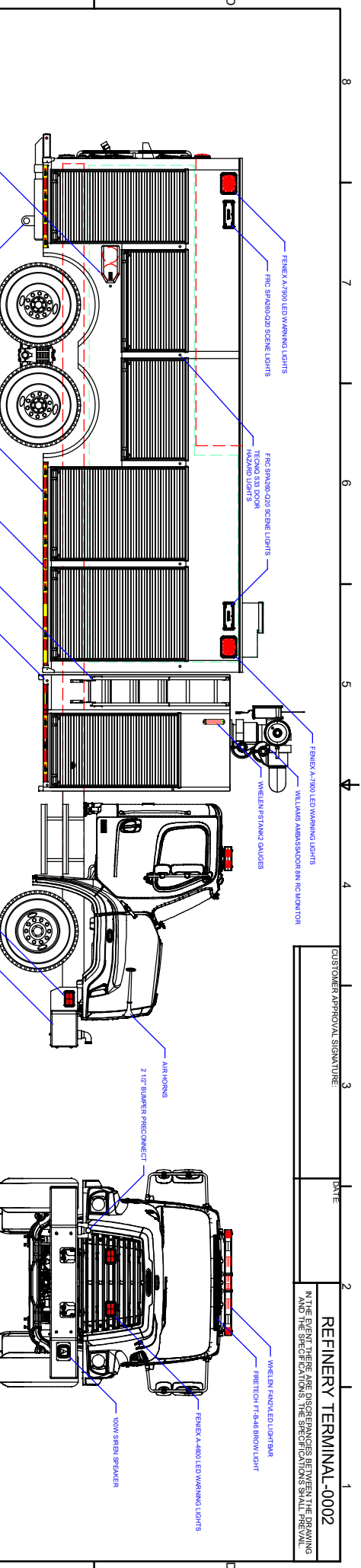
To view more photos and download spec sheet, please visit us at [AlexisFire.com](http://AlexisFire.com).



CUSTOMER APPROVAL SIGNATURE: \_\_\_\_\_ DATE: \_\_\_\_\_

**REFINERY TERMINAL -0002**

IN THE EVENT THERE ARE DISCREPANCIES BETWEEN THE DRAWING AND THE SPECIFICATIONS THE SPECIFICATIONS SHALL PREVAIL.



**COMPARTMENT DIMENSIONS**

COMP.#	DOOR OPENING SIZES
L1 & R1	46" WIDE X 68" HIGH X 10'28" DEEP
L2 & R2	46" WIDE X 68" HIGH X 10'28" DEEP
L3 & R3	50" WIDE X 28" HIGH X 10' DEEP
L3 & R4	50" WIDE X 28" HIGH X 10' DEEP
L5 & R5	37" WIDE 68" HIGH X 10'28" DEEP

**ALEXIS FIRE EQUIPMENT CO.**  
P.O. BOX 649, ALEXIS, ILLINOIS 62412

**FOAM TENDER**  
REFINERY TERMINAL FIRE CO.  
CORPUS CHRISTI TX

SIZE SCALE: 3/8" = 1'

CONTROL # 2435 SHEET 1 OF 2

UNLESS OTHERWISE SPECIFIED DIMENSIONS ARE IN INCHES (1/8" = 3.175 mm)

FRANCHISEE: METRIC (1/8" = 3.175 mm)

The copyright of this drawing and design and the right of reproduction herein are held by Alexis Fire Equipment Co.

3500 N. MILITARY AVE. SUITE 100  
MILWAUKEE, WI 53234  
TEL: 414.331.1111 FAX: 414.331.1112  
WWW.ALEXISFIRE.COM