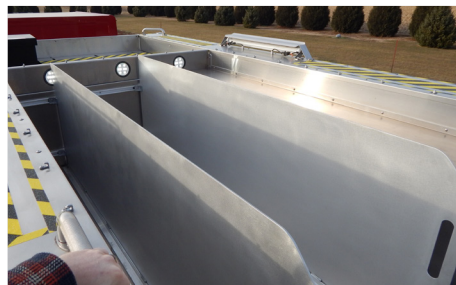


1500 GPM MAP PUMPER #2508



TECHNICAL SPECIFICATIONS

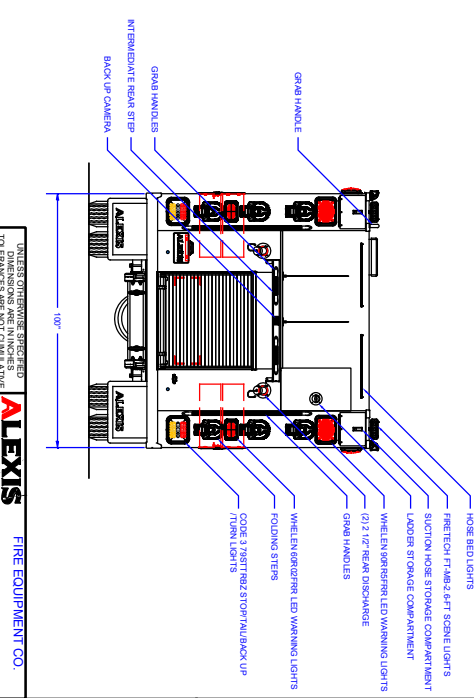
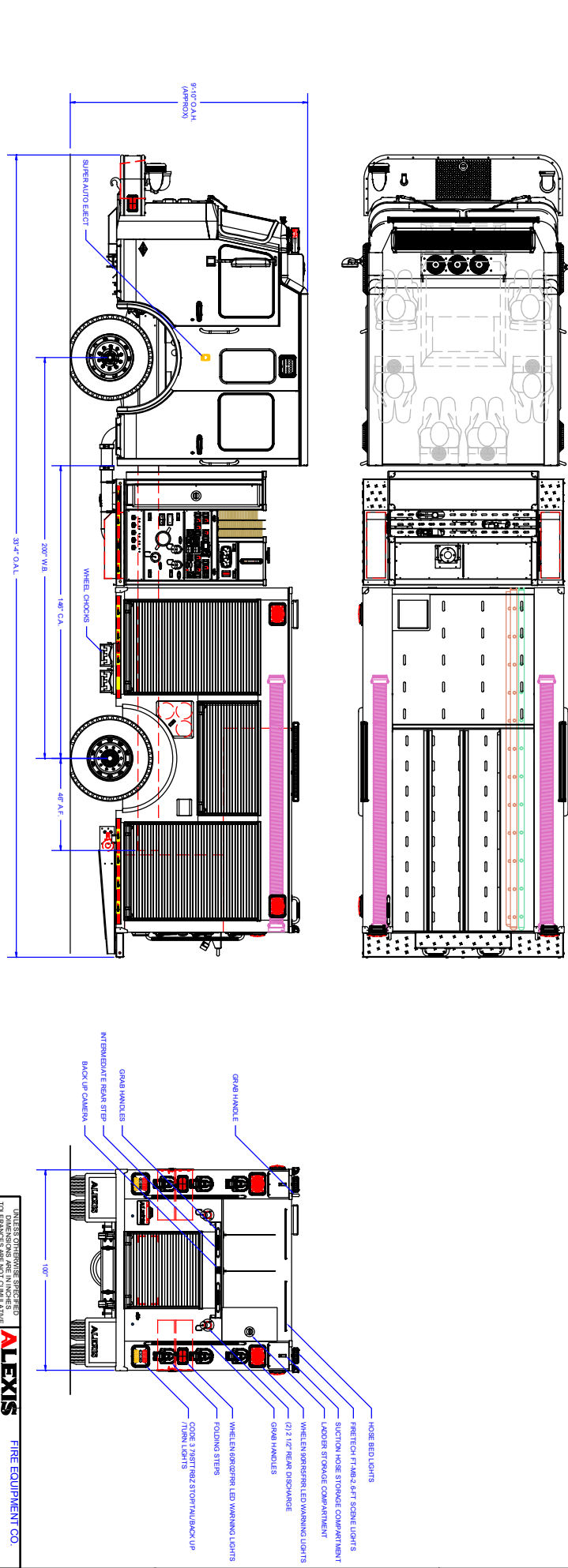
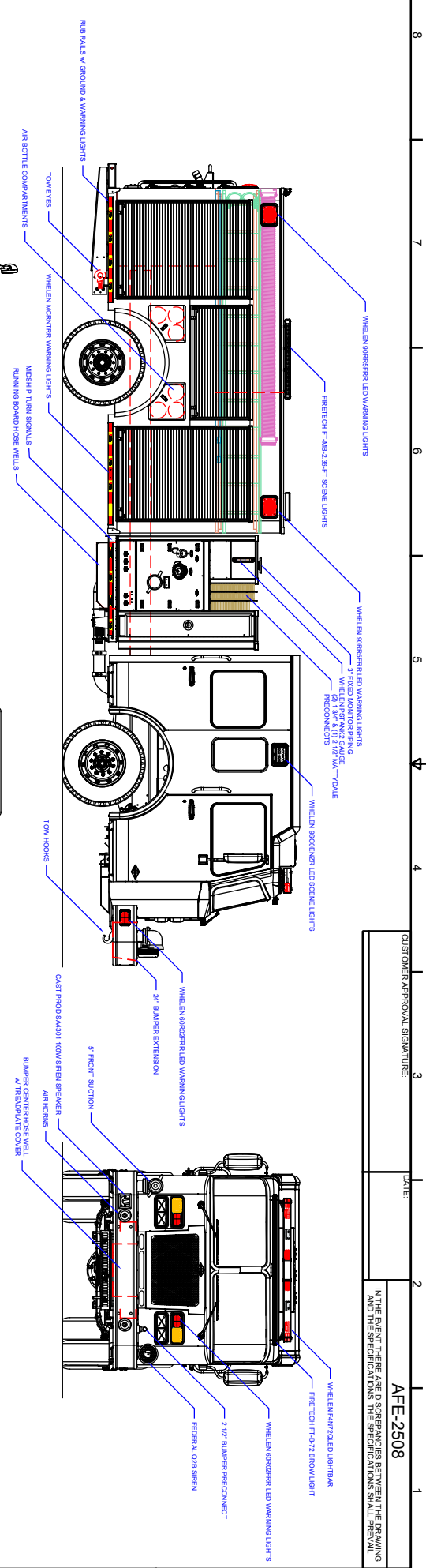
- Spartan FC-94 MFD 10" Raised Roof
- Cummins L9 450 HP Diesel Engine
- Allison 3000 EVS Transmission
- Heavy Duty Stainless-Steel Body and Subframe
- Four (4) Person Cab
- 24" Front Bumper Extension with Center Hose Well
- Hale DSD 1500 GPM Split Shaft Pump
- Trident Air Primer, Two (2) Location
- 1000 Gallon Poly Tank
- Transverse Storage Compartment Ahead of Pump Module with Vertical Pull Out Boards Each Side
- Stainless-Steel Side Mount Pump Module
- Two (2) 6" Intakes, One Each Side, Left and Right
- One (1) 5" Front Intake Adapted to 6" NST
- Two (2) 1½" Mattydale and One (1) 2½" Preconnects
- One (1) 1½" Bumper Extension Preconnect
- Two (2) 2½" Discharges, Left Side
- One (1) 2½" Discharge, Right Side
- Two (2) 2½" Discharges, Rear
- One (1) 3" Discharge Adapted to 5" Storz, Right Side
- 3" Fixed Monitor Piping Pump Panel Controlled
- Three (3) Triple Air Bottle Wheel Well Compartments, One (1) Left, Two (2) Right Side
- Two (2) Hose Bed Dividers
- ROM Painted Roll-Up Doors
- 500# Roll Out Tray, Rear Compartment
- Two (2) Hard Suction Hose Storage Compartments, Rear Access One (1) Each Side
- Ladder Storage Right Side Vertical in Hose Bed
- Progressive Dynamics Battery Charger with Viar Compressor and Kusmaul 120V 20A Super Auto Eject
- Whelen LED Warning Light Package
- FireTech Scene Light Package
- Twelve (12) Folding Steps, Three (3) Ahead Each Side, Three (3) Each Side Rear
- 9' 10" Overall Height
- 33' 4" Overall Length
- 200" Wheelbase
- 146" Cab to Axle



CUSTOMER APPROVAL SIGNATURE: _____ DATE: _____

AFF-2508

IN THE EVENT THERE ARE DISCREPANCIES BETWEEN THE DRAWING AND THE SPECIFICATIONS THE SPECIFICATIONS SHALL PREVAIL.



COMPARTMENT DIMENSIONS

COMP.#	DOOR OPENING SIZES
L1 & R1	46\"/>

REVISION HISTORY	DATE	BY	DESCRIPTION
1	12/25/22	JH	REVISED DRAWING
2	12/25/22	JH	REVISED DRAWING
3	12/25/22	JH	REVISED DRAWING
4	12/25/22	JH	REVISED DRAWING
5	12/25/22	JH	REVISED DRAWING
6	12/25/22	JH	REVISED DRAWING
7	12/25/22	JH	REVISED DRAWING
8	12/25/22	JH	REVISED DRAWING

CONTROL LOCATION	APPARATUS TYPE	PUMPER
Control Location	Site	Pumper
Pump Drive	Spill Shift	
Chassis	Spartan 54 - BOC	
Tank Capacity	1000	
Pump Make	Hale	
Pump Model	DSG	
Pump GPM	1500	

COMP.#	DOOR OPENING SIZES
L1 & R1	46\"/>

COMP.#	DOOR OPENING SIZES
L2 & R2	54\"/>

COMP.#	DOOR OPENING SIZES
L3 & R3	46\"/>

COMP.#	DOOR OPENING SIZES
R1 & R2	38\"/>

COMP.#	DOOR OPENING SIZES
R3 & R4	38\"/>

COMP.#	DOOR OPENING SIZES
R5 & R6	38\"/>

COMP.#	DOOR OPENING SIZES
R7 & R8	38\"/>

COMP.#	DOOR OPENING SIZES
R9 & R10	38\"/>

COMP.#	DOOR OPENING SIZES
R11 & R12	38\"/>

COMP.#	DOOR OPENING SIZES
R13 & R14	38\"/>

COMP.#	DOOR OPENING SIZES
R15 & R16	38\"/>

COMP.#	DOOR OPENING SIZES
R17 & R18	38\"/>

COMP.#	DOOR OPENING SIZES
R19 & R20	38\"/>

COMP.#	DOOR OPENING SIZES
R21 & R22	38\"/>

COMP.#	DOOR OPENING SIZES
R23 & R24	38\"/>

COMP.#	DOOR OPENING SIZES
R25 & R26	38\"/>

COMP.#	DOOR OPENING SIZES
R27 & R28	38\"/>

COMP.#	DOOR OPENING SIZES
R29 & R30	38\"/>

COMP.#	DOOR OPENING SIZES
R31 & R32	38\"/>

COMP.#	DOOR OPENING SIZES
R33 & R34	38\"/>

COMP.#	DOOR OPENING SIZES
R35 & R36	38\"/>

COMP.#	DOOR OPENING SIZES
R37 & R38	38\"/>

COMP.#	DOOR OPENING SIZES
R39 & R40	38\"/>

COMP.#	DOOR OPENING SIZES
R41 & R42	38\"/>

COMP.#	DOOR OPENING SIZES
R43 & R44	38\"/>

COMP.#	DOOR OPENING SIZES
R45 & R46	38\"/>

COMP.#	DOOR OPENING SIZES
R47 & R48	38\"/>

COMP.#	DOOR OPENING SIZES
R49 & R50	38\"/>

COMP.#	DOOR OPENING SIZES
R51 & R52	38\"/>

COMP.#	DOOR OPENING SIZES
R53 & R54	38\"/>

COMP.#	DOOR OPENING SIZES
R55 & R56	38\"/>

COMP.#	DOOR OPENING SIZES
R57 & R58	38\"/>

COMP.#	DOOR OPENING SIZES
R59 & R60	38\"/>

COMP.#	DOOR OPENING SIZES
R61 & R62	38\"/>

COMP.#	DOOR OPENING SIZES
R63 & R64	38\"/>

COMP.#	DOOR OPENING SIZES
R65 & R66	38\"/>

COMP.#	DOOR OPENING SIZES
R67 & R68	38\"/>

COMP.#	DOOR OPENING SIZES
R69 & R70	38\"/>

COMP.#	DOOR OPENING SIZES
R71 & R72	38\"/>

COMP.#	DOOR OPENING SIZES
R73 & R74	38\"/>

COMP.#	DOOR OPENING SIZES
R75 & R76	38\"/>

COMP.#	DOOR OPENING SIZES
R77 & R78	38\"/>

COMP.#	DOOR OPENING SIZES
R79 & R80	38\"/>

COMP.#	DOOR OPENING SIZES
R81 & R82	38\"/>

COMP.#	DOOR OPENING SIZES
R83 & R84	38\"/>

COMP.#	DOOR OPENING SIZES
R85 & R86	38\"/>

COMP.#	DOOR OPENING SIZES
R87 & R88	38\"/>

COMP.#	DOOR OPENING SIZES
R89 & R90	38\"/>

COMP.#	DOOR OPENING SIZES
R91 & R92	38\"/>

COMP.#	DOOR OPENING SIZES
R93 & R94	38\"/>

COMP.#	DOOR OPENING SIZES
R95 & R96	38\"/>

COMP.#	DOOR OPENING SIZES
R97 & R98	38\"/>

COMP.#	DOOR OPENING SIZES
R99 & R100	38\"/>

COMP.#	DOOR OPENING SIZES
R101 & R102	38\"/>

COMP.#	DOOR OPENING SIZES
R103 & R104	38\"/>

COMP.#	DOOR OPENING SIZES
R105 & R106	38\"/>

COMP.#	DOOR OPENING SIZES
R107 & R108	38\"/>

COMP.#	DOOR OPENING SIZES
R109 & R110	38\"/>

COMP.#	DOOR OPENING SIZES
R111 & R112	38\"/>

COMP.#	DOOR OPENING SIZES
R113 & R114	38\"/>

COMP.#	DOOR OPENING SIZES
R115 & R116	38\"/>

COMP.#	DOOR OPENING SIZES
R117 & R118	38\"/>

COMP.#	DOOR OPENING SIZES
R119 & R120	38\"/>

COMP.#	DOOR OPENING SIZES
R121 & R122	38\"/>

COMP.#	DOOR OPENING SIZES
R123 & R124	38\"/>

COMP.#	DOOR OPENING SIZES
R125 & R126	38\"/>

COMP.#	DOOR OPENING SIZES
R127 & R128	38\"/>

COMP.#	DOOR OPENING SIZES
R129 & R130	38\"/>

COMP.#	DOOR OPENING SIZES
R131 & R132	38\"/>

COMP.#	DOOR OPENING SIZES
R133 & R134	38\"/>

COMP.#	DOOR OPENING SIZES
R135 & R136	38\"/>

COMP.#	DOOR OPENING SIZES
R137 & R138	38\"/>

COMP.#	DOOR OPENING SIZES
R139 & R140	38\"/>

COMP.#	DOOR OPENING SIZES
R141 & R142	38\"/>

COMP.#	DOOR OPENING SIZES
R143 & R144	38\"/>

COMP.#	DOOR OPENING SIZES
R145 & R146	38\"/>

COMP.#	DOOR OPENING SIZES
R147 & R148	38\"/>

COMP.#	DOOR OPENING SIZES
R149 & R150	38\"/>

COMP.#	DOOR OPENING SIZES
R151 & R152	38\"/>

COMP.#	DOOR OPENING SIZES
R153 & R154	38\"/>

COMP.#	DOOR OPENING SIZES
R155 & R156	38\"/>

COMP.#	DOOR OPENING SIZES
R157 & R158	38\"/>

COMP.#	DOOR OPENING SIZES
R159 & R160	38\"/>

COMP.#	DOOR OPENING SIZES
R161 & R162	38\"/>

COMP.#	DOOR OPENING SIZES
R163 & R164	38\"/>

COMP.#	DOOR OPENING SIZES
R165 & R166	38\"/>

COMP.#	DOOR OPENING SIZES
R167 & R168	38\"/>

COMP.#	DOOR OPENING SIZES
R169 & R170	38\"/>

COMP.#	DOOR OPENING SIZES
R171 & R172	38\"/>

COMP.#	DOOR OPENING SIZES
R173 & R174	38\"/>

COMP.#	DOOR OPENING SIZES
R175 & R176	38\"/>

COMP.#	DOOR OPENING SIZES
R177 & R178	38\"/>

COMP.#	DOOR OPENING SIZES
R179 & R180	38\"/>

COMP.#	DOOR OPENING SIZES
R181 & R182	38\"/>

COMP.#	DOOR OPENING SIZES
R183 & R184	38\"/>

COMP.#	DOOR OPENING SIZES
R185 & R186	38\"/>

COMP.#	DOOR OPENING SIZES
R187 & R188	38\"/>

COMP.#	DOOR OPENING SIZES
R189 & R190	38\"/>

COMP.#	DOOR OPENING SIZES
R191 & R192	38\"/>

COMP.#	DOOR OPENING SIZES
R193 & R194	38\"/>

COMP.#	DOOR OPENING SIZES
R195 & R196	38\"/>

COMP.#	DOOR OPENING SIZES
R197 & R198	38\"/>

COMP.#	DOOR OPENING SIZES
R199 & R200	38\"/>

COMP.#	DOOR OPENING SIZES
R201 & R202	38\"/>

COMP.#
