

CUSTOM TOP CONTROL PUMPER

OXFORD TOWNSHIP FIRE PROTECTION DISTRICT / ALPHA, IL



ALEXIS



THANK YOU TO THE OXFORD TOWNSHIP FIRE PROTECTION DISTRICT FOR THE PURCHASE OF THIS UNIT.



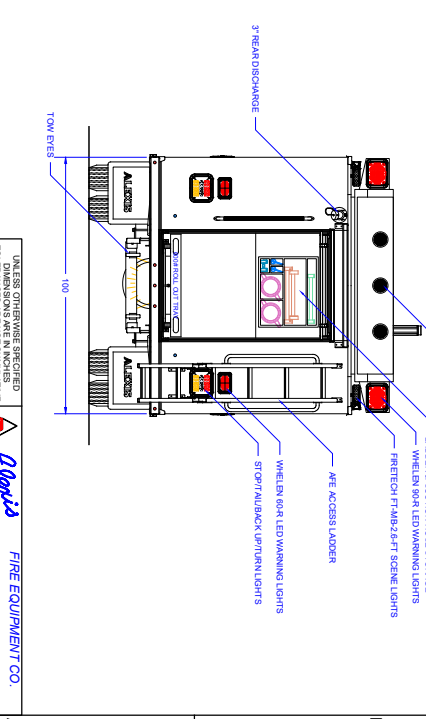
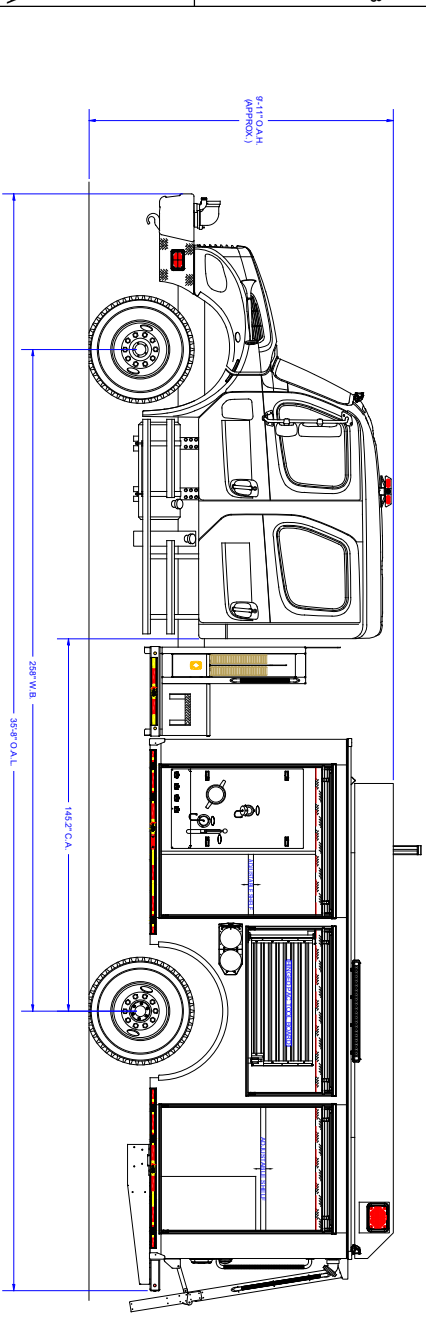
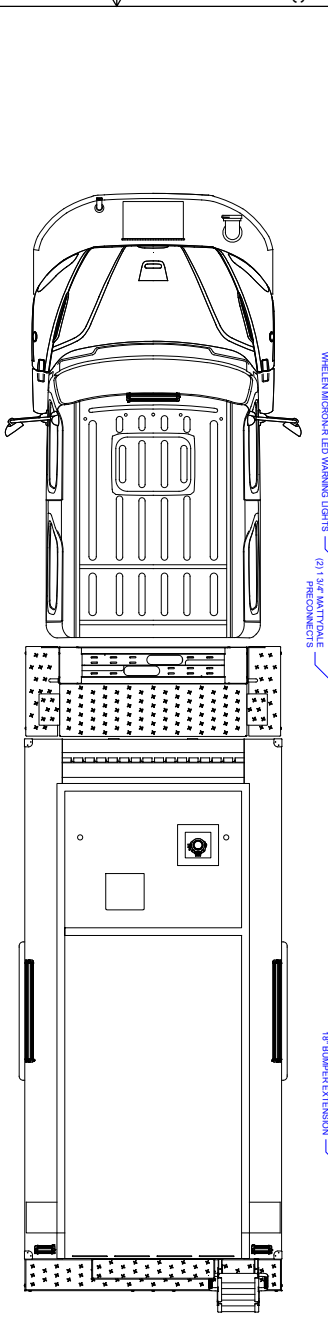
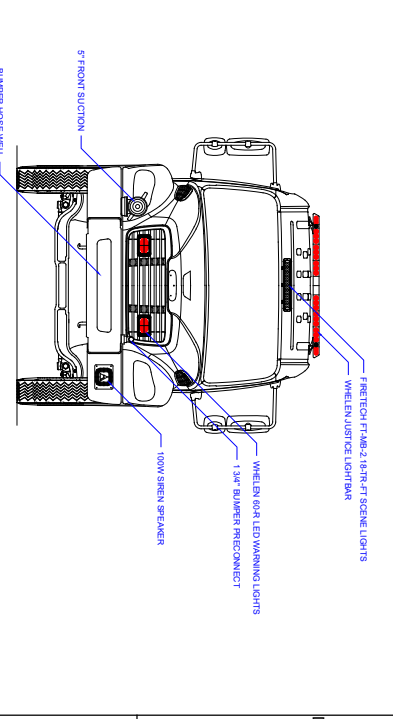
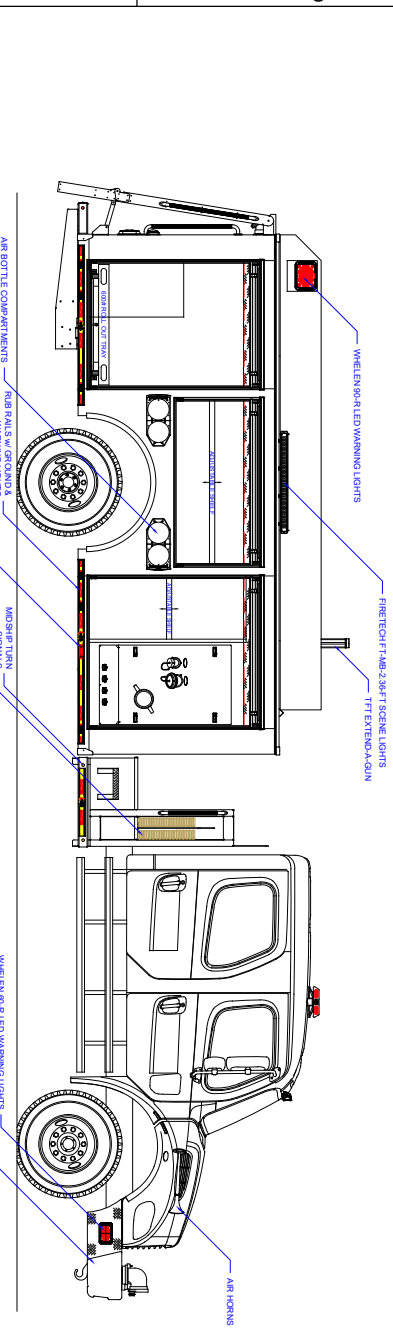
TECHNICAL SPECIFICATIONS

- Freightliner M2 106 4-Door Chassis
- Cummins L9, 350-HP Diesel Engine
- Allison 3000 EVS Automatic Transmission
- Heavy Duty Stainless steel Body and Sub-Frame
- ROM Roll Up Doors with right side hem door over wheel well
- Five (5) person cab seating with four (4) SCBA seats
- 1000-Gallon Poly Tank
- Darley PSM 1500-GPM Pump with operator's panel across top of apparatus
- Four (4) 2 1/2" Discharges, two (2) left side, one (1) right side and one (1) rear
- Two (2) 3" Discharges, one (1) right side and one (1) over pump for deck gun
- One (1) 2 1/2" Gated Suction, left side
- Two (2) 1 1/2" Cartridge Lay Preconnects, front of body
- Three (3) Dual bottle Air bottle compartments, one (1) left and two (2) right side
- Ziamatic Electrically controlled Ladder rack, right side
- Suction Hose storage compartment, right side with rear access
- Progressive Dynamics on-board battery charger with Viair Air compressor
- Blue Sea Sure Eject 120-volt shoreline connection
- Floor mounted console for emergency switches, cab
- Whelen Electronic Siren with 100-watt Whelen speaker
- FRC Spectra Scene Light Package
- Whelen LED Warning Light Package
- Diamond Grade Chevron pattern striping, rear
- 10' Overall height
- 33' 10" Overall length
- 266" Wheelbase
- 153.2" Cab to Axle
- 14,600 FAWR
- 27,000 RAWR
- 41,600 GVWR



To view more photos and download spec sheet, please visit us at AlexisFire.com.

						CUSTOMER APPROVAL SIGNATURE		
						DATE		
						OXFORD-0001		
						IN THE EVENT THERE ARE DISCREPANCIES BETWEEN THE DRAWING AND THE SPECIFICATIONS THE SPECIFICATIONS SHALL PREVAIL.		



REV	DESCRIPTION	DATE	DRAWN
1	REVISION HISTORY		

Pump Info:		Apparatus Type: Pumper
Control Location:	Top	Chassis: Freightliner 4-Door
Pump Drive:	Shaft Shalt	Tank Capacity: 1000
Pump Model:	Waterous	Material: Stainless Steel
Pump GPM:	1500	

COMPARTMENT DIMENSIONS	
COMP #	DOOR OPENING SIZES
L1 & R1	57" WIDE X 62" HIGH X 127/25" DEEP
L2 & R2	63" WIDE X 28" HIGH X 29" DEEP
L3 & R3	48" WIDE X 62" HIGH X 29" DEEP
REAR	41" WIDE X 82" HIGH X 127/25" DEEP

UNLESS OTHERWISE SPECIFIED, DIMENSIONS ARE IN INCHES. TORQUE SPECIFICATIONS ARE IN FT/LBS/IN. ALL DIMENSIONS ARE TO THE CENTERLINE UNLESS INDICATED OTHERWISE.

Alpha Fire EQUIPMENT CO.
P.O. BOX 549, ALLEN, ILLINOIS 61412

TOP MOUNT EQUALIZER
OXFORD TWP FPD
ALPHA, ILLINOIS

SIZE SCALE: DIMENSIONS: EQ-A80
D: 1/2" = 1'
CONTRACT #: 2359
SHEET: 1 OF 2