

TOP CONTROL PUMPER

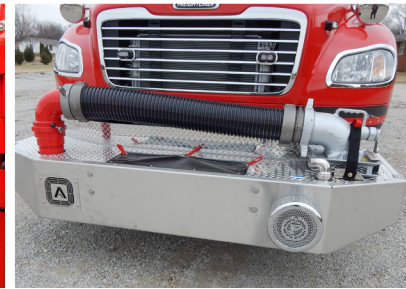
OGLE LEE FIRE PROTECTION DISTRICT / ROCHELLE, ILLINOIS



ALEXIS



THANK YOU TO THE OGLE LEE FIRE PROTECTION DISTRICT FOR THE PURCHASE OF THIS UNIT.



TECHNICAL SPECIFICATIONS

- Freightliner M2 106 4-Door Chassis
- Cummins L9, 350-HP Diesel Engine
- Allison 3000 EVS Automatic Transmission
- Heavy Duty Stainless-Steel Body and Sub-Frame
- One (1) Reese type rear trailer hitch with electrical connections
- 18" Front bumper extension with center hose well and 1 1/2" Preconnect
- 1250-Gallon Poly Tank with 20-gallon foam tank
- One (1) 2 1/2" FirePrograms tank fill, rear
- Darley PSM, 1500-GPM Pump
- Four (4) 2 1/2" Discharges, two (2) left, one (1) right side and one (1) rear
- Two (2) 3" Discharges, one (1) right side and one (1) over pump for deck gun
- One (1) TFT manually telescoping waterway
- Two (2) 1 1/2" Cartridge Lay Preconnects, ahead of pump module
- Front and Rear 5" Suctions
- Two (2) 2 1/2" Gated Suctions, one (1) each side
- Waterous Aquis 1.5 Foam System
- Three (3) Dual bottle Air bottle compartments, one (1) left and two (2) right side
- One (1) Fire Extinguisher compartment, left side wheel well
- Ziamatic Electrically controlled Ladder/Pike pole rack, right side
- One (1) Suction hose compartment for two (2) hose, right side with rear access
- Progressive Dynamics battery charger with Viair air compressor and Auto Eject
- Floor mounted console for emergency switches with map binder storage, cab
- FireCom Wireless Intercom System
- Code-3 Electronic Siren with 100-watt Code-3 speaker
- Federal Q2B mechanical Siren, front bumper
- Two (2) Audiovox Back-up Camera Systems, one (1) pump panel and one (1) cab
- Fire Research and Akron 12-volt Scene Light Packages
- Golight remote control LED spotlight
- Code-3 LED Warning Light Package
- Smart Power 5500-watt Hydraulic Generator with 120-volt system
- One (1) Akron Electric cord reel with 150-ft of 10/3 cord and Junction box
- Two (2) Akron Extenda-Lite LED 120-volt tripod lights, rear mounted
- Diamond Grade Chevron pattern striping, rear
- 10' 5" Overall height • 14,600 FAWR
- 35' 4" Overall length • 31,000 RAWR
- 266" Wheelbase • 45,600 GVWR
- 153.2" Cab to Axle

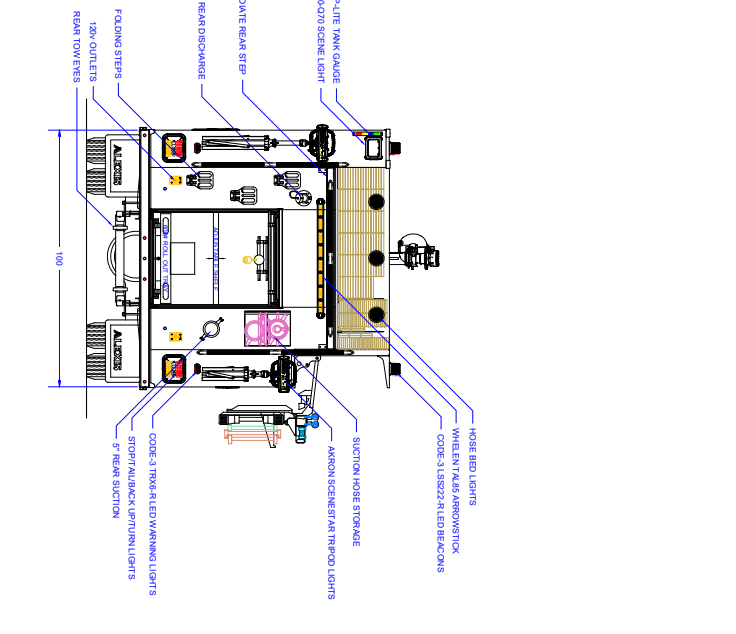
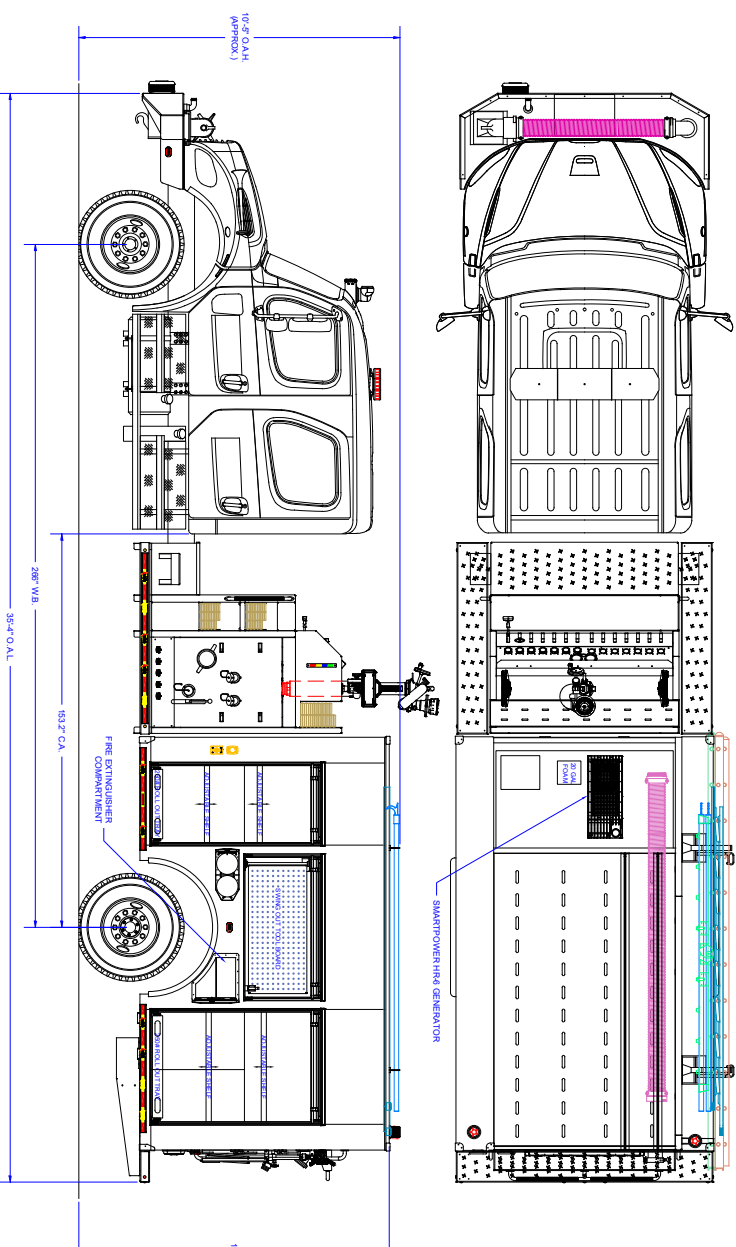
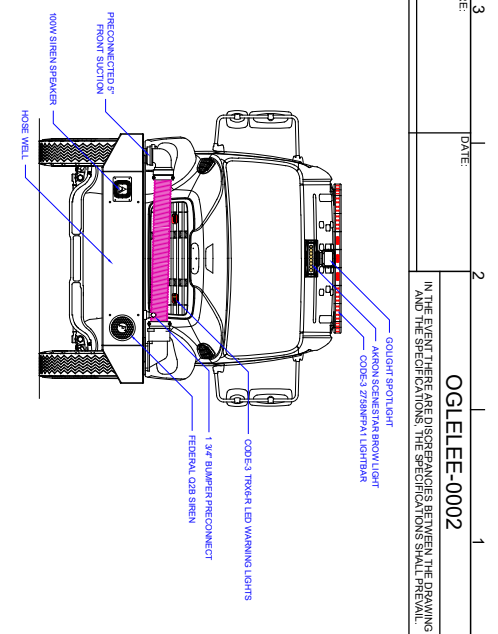
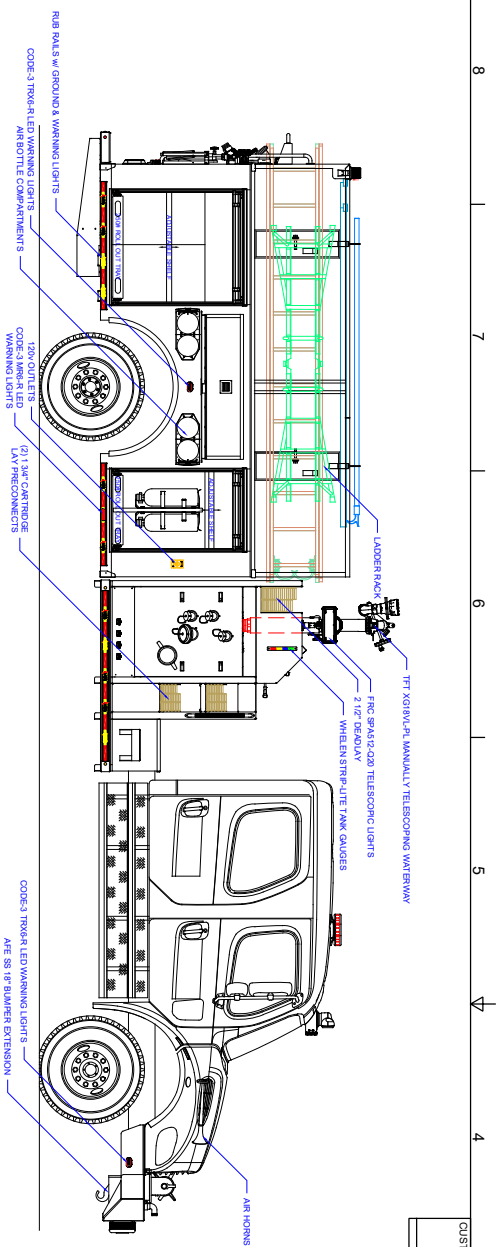


To view more photos and download spec sheet, please visit us at AlexisFire.com.

CUSTOMER APPROVAL SIGNATURE: _____ DATE: _____

IN THE EVENT THERE ARE DISCREPANCIES BETWEEN THE DRAWING AND THE SPECIFICATIONS, THE SPECIFICATIONS SHALL PREVAIL.

OGLEE-EE-0002



COMPARTMENT DIMENSIONS

COMP #	DOOR OPENING SIZES
L1	39" WIDE X 62" HIGH X 127 1/2" DEEP
L2	54" WIDE X 26" HIGH X 127" DEEP
L3	42" WIDE X 62" HIGH X 127 1/2" DEEP
R1	39" WIDE X 47" HIGH X 127 1/2" DEEP
R2	54" WIDE X 13" HIGH X 12" DEEP
R3	42" WIDE X 47" HIGH X 127 1/2" DEEP
REAR	39" WIDE X 44" HIGH X 29" DEEP

UNLESS OTHERWISE SPECIFIED DIMENSIONS ARE IN INCHES (DIMENSIONS ARE NOT COVARIABLE)

ALEXIS FIRE EQUIPMENT CO.
 P.O. BOX 549, ALEXIS, ILLINOIS 61412

PUMPER
 OGLE-LEE FIRE PROT DIST
 ROCKFELLE, IL

SIZE SCALE: 1/2" = 1'
 DWG NO: P-W46
 MATERIAL: 2354
 SHEET: 1 OF 2

Pump Info:

DESCRIPTION	DATE	BY
CONTROL LOCATION TOP		
PUMP DRIVE: Split Shaft		
CHARASSIS: Freightliner 4-Door		
TANK CAPACITY: 1250		
PUMP MODEL: PSM		
PUMP GPM: 1500		

REV	DESCRIPTION	DATE	BY
01	CHANGE CONNECTION	10/18	MJT
02	CHANGE CONNECTION	10/18	MJT
03	CHANGE CONNECTION	10/18	MJT

COMP #	DOOR OPENING SIZES
L1	39" WIDE X 62" HIGH X 127 1/2" DEEP
L2	54" WIDE X 26" HIGH X 127" DEEP
L3	42" WIDE X 62" HIGH X 127 1/2" DEEP
R1	39" WIDE X 47" HIGH X 127 1/2" DEEP
R2	54" WIDE X 13" HIGH X 12" DEEP
R3	42" WIDE X 47" HIGH X 127 1/2" DEEP
REAR	39" WIDE X 44" HIGH X 29" DEEP

UNLESS OTHERWISE SPECIFIED DIMENSIONS ARE IN INCHES (DIMENSIONS ARE NOT COVARIABLE)

ALEXIS FIRE EQUIPMENT CO.
 P.O. BOX 549, ALEXIS, ILLINOIS 61412

PUMPER
 OGLE-LEE FIRE PROT DIST
 ROCKFELLE, IL

SIZE SCALE: 1/2" = 1'
 DWG NO: P-W46
 MATERIAL: 2354
 SHEET: 1 OF 2