

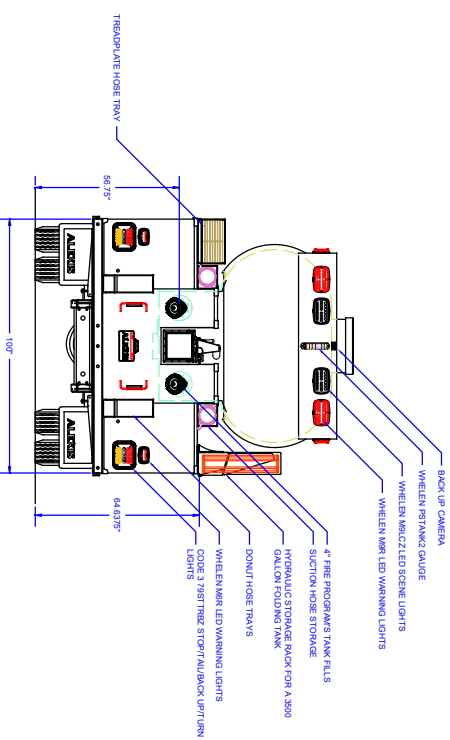
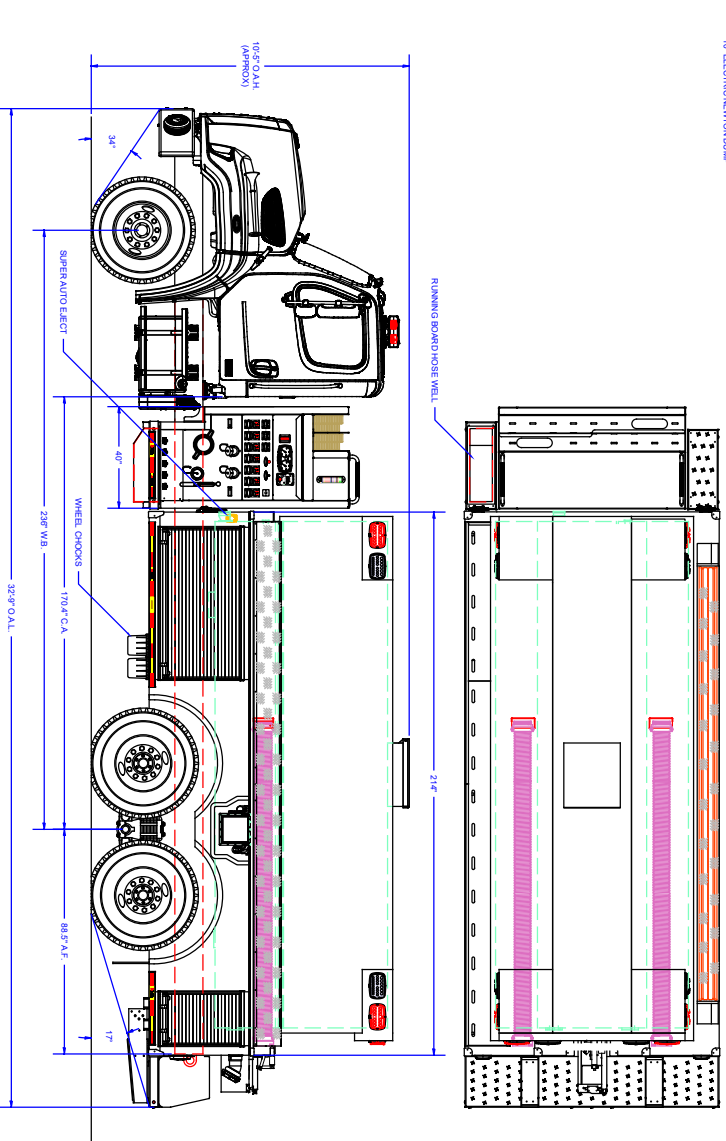
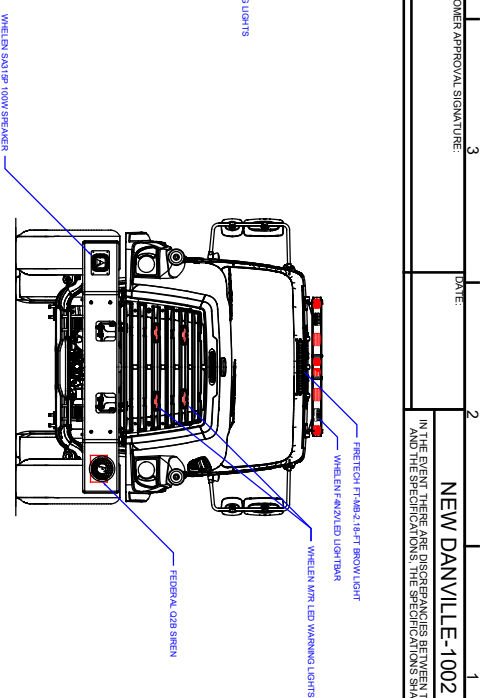
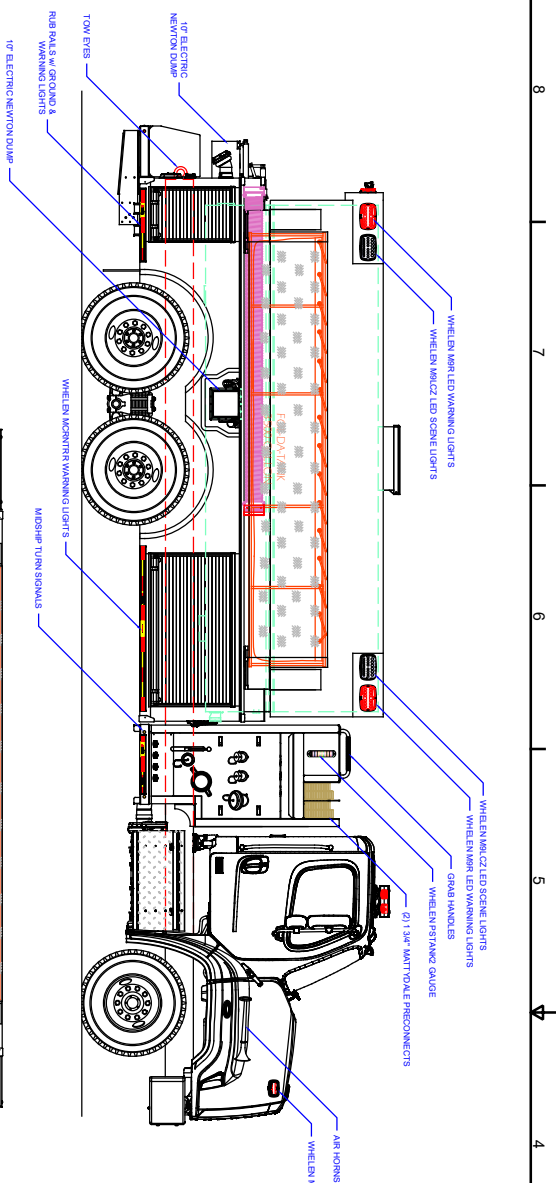
3000 GALLON TANKER #2594



TECHNICAL SPECIFICATIONS

- Freightliner 114SD 2-Door Chassis
- Cummins X12 500 HP Engine
- Allison 4000 EVS Automatic Transmission
- Heavy Duty Stainless Steel Body and Stainless Steel Subframe
- Stainless Steel Intermediate Pump Module
- One (1) Free Floating Hose Well, Left Side Running Board
- Hale DSD 1500 GPM Midship Pump
- Trident Air Prime System
- Waterous Pressure Relief Valve with FRC Throttle Xcel
- FRC Tankvision Water Tank Level Gauge with Three (3) FRC MaxVision Strip Lites
- Two (2) 6" Intakes, One (1) Each Side
- Two (2) 2½" Gated Intakes, One (1) Each Side
- Two (2) 2½" Discharges, Left Side and Two (2) 2½" Discharges, Right Side
- One (1) 4" Discharge Adapted to 5" Storz, Right Side
- One (1) 1½" and One (1) 2½" Crosslay Preconnects
- Hose Tray for 150' of 5" Hose, Left Side Compartment Top
- ROM Painted Roll-Up Doors
- Zico Hydraulic Folding Tank Bracket, Right Side
- Suction Hose Storage, One (1) Each Side
- Donut Roll Hose Storage Rear Tail Step, One (1) Each Side
- 3000 Gallon Poly Ellip-T Tank with Stainless Steel Wrap
- Two (2) 4" Storz FirePrograms Tank Fill, Rear One (1) Each Side
- Three (3) 10" Newton Stainless Steel Electric Dumps with 18" Electric Extensions, One (1) Each Side Between the Rear Wheels and One (1) Rear
- 12 Volt Electrical System with NFPA Compliant Warning Light Package
- Progressive Dynamics Battery Charger with Viar Compressor, L1 Compartment
- Kussmaul 20 Amp Super Auto-Eject 120V Shoreline Connection, Left Front Body Post
- Whelen LED Warning Light Package
- Whelen 200W Siren and 100W Speaker
- Federal Q2B Siren
- Six (6) Whelen M9 LED Scene Lights, Two (2) Each Side and Two (2) Rear
- One (1) Firetech HiViz 46" LED Brow Light
- Two (2) 10' Lengths of 6" Suction Hose, One (1) 6" Chrome Barrel Strainer, and One (1) 3500 Gallon Fol-Da-Tank
- 10'-5" Overall Height
- 32'-9" Overall Length
- 236" Wheelbase
- 170.4" Cab to Axle
- 18,000 FAWR
- 46,000 RAWR
- 64,000 GVWR





Pump Info:									
Control Location: Side									
Pump Drive: Split Shaft									
Appurtenis Type: Tanker									
Chassis:									
COMP #									
DOOR OPENING SIZES									
58" WIDE X 27" HIGH X 28" DEEP									
19" WIDE X 27" HIGH X 28" DEEP									
MATERIAL									
STEEL									
SIZES									
D 12" = 1"									
CONTRACT #									
2554									
SHEET 1 OF 2									