

# RIV PUMPER

LOUISE VOLUNTEER FIRE DEPARTMENT / LOUISE, TEXAS



# ALEXIS



THANK YOU TO THE LOUISE VOLUNTEER FIRE DEPARTMENT FOR THE PURCHASE OF THIS UNIT.



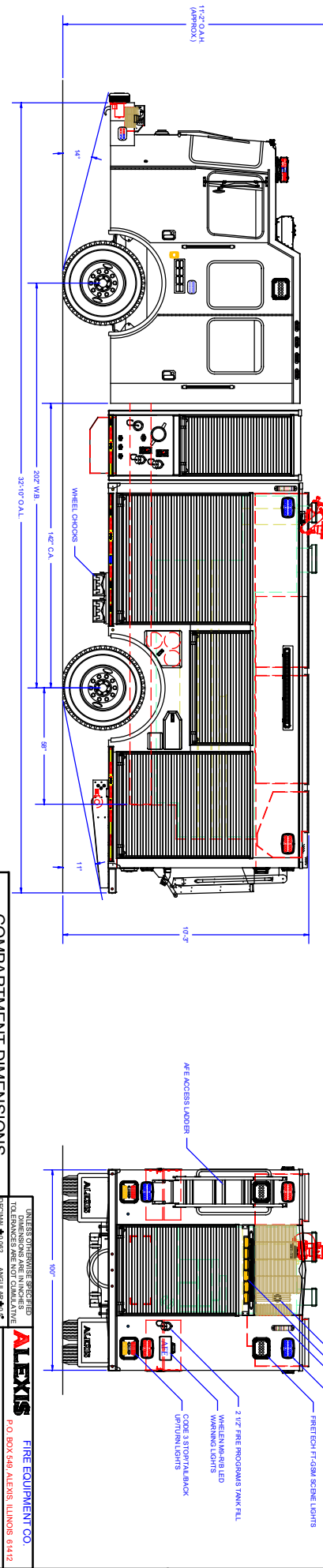
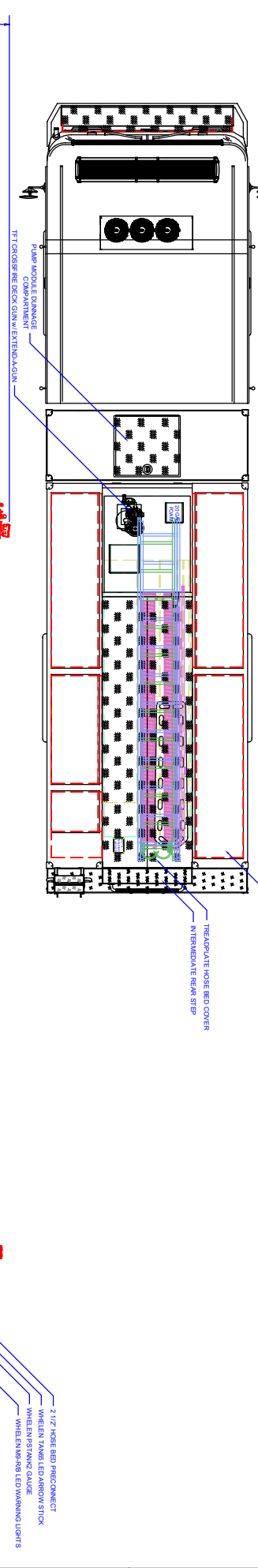
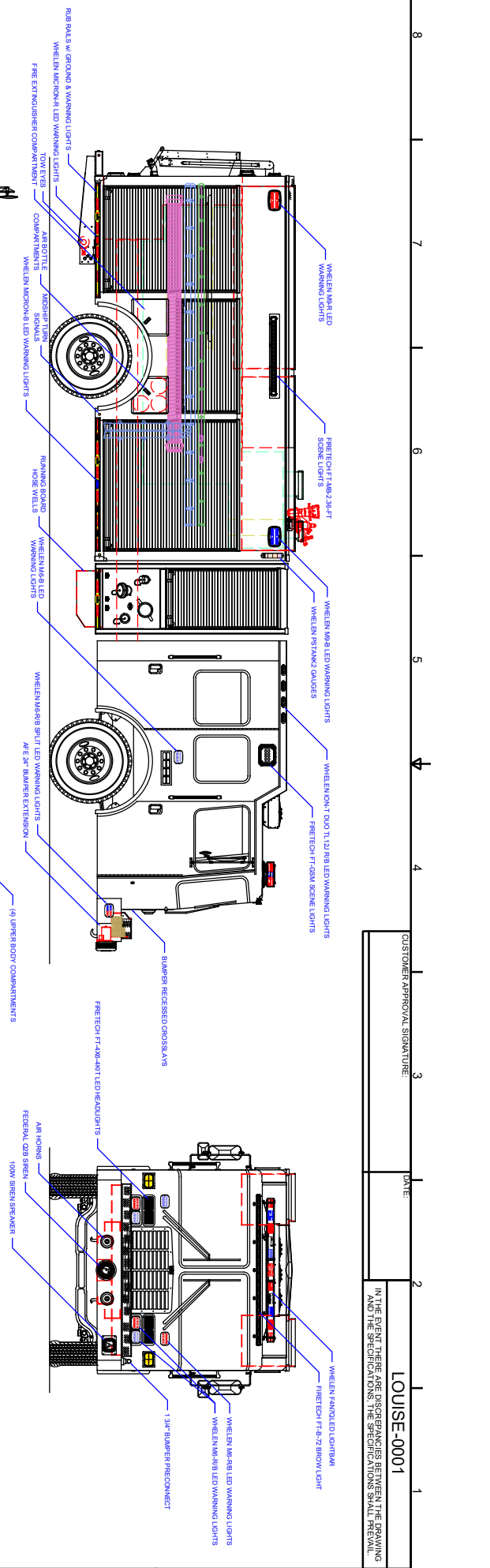
## TECHNICAL SPECIFICATIONS

- HME 1871w MFDXL 12" Raised Roof Chassis
- Cummins L9 450-HP Diesel Engine
- Allison 3000 EVS Automatic Transmission
- Heavy Duty Stainless-Steel Body & Subframe
- Five (5) Person Cab Seating w/ Four (4) SCBA Seats
- Cab EMS Compartments w/ Norcold Refrigerator
- ROM Painted Roll-up Doors
- Waterous CXVC20 1500-GPM Split Shaft Pump
- 1000-Gallon Poly Tank w/ 20-Gallon Foam Tank
- Three (3) 2 1/2" Discharges, Two (2) Left and One (1) Right
- One (1) 3" Discharge, Right Side
- Two (2) 2 1/2" Gated Suctions, One (1) Left and One (1) Right
- FoamPro 1600 Foam System
- 3" Deck Gun Piping w/ Extend-a-Gun
- One (1) 2 1/2" Front of Hosebed Preconnect
- Two (2) 1 1/2" Preconnects, Pump Module Compartment
- Two (2) Hannay Booster Reels, RIV Pump Module
- One (1) 2 1/2" Front Bumper Preconnect
- One (1) 2 1/2" Tank Fill, Rear
- Two (2) Triple Air Bottle Wheel Well Storage Compartments, One (1) Each Side
- Ladder/Suction Hose/Pike Pole Storage, Through the Tank
- Four (4) Upper Storage Compartments
- Oil Dry Hopper, Left Side Rear Upper Storage Compartment
- Whelen LED Warning Light Package
- FireTech LED Scene Light Package
- Whelen LED Traffic Advisor Arrow Stick
- Whelen Electronic Siren w/ Two (2) 100-watt Speakers
- Federal Q2B Siren
- FireCom Intercom System
- Audiovox Color Observation Back-up Camera System
- Blue/White Diamond Grade Chevron Striping, Rear
- 11' 2" Overall Height • 18,740 FAWR
- 32' 10" Overall Length • 27,000 RAWR
- 202" Wheelbase • 45,740 GVWR
- 142" Cab to Axle



To view more photos and download spec sheet, please visit us at [AlexisFire.com](http://AlexisFire.com).





COMPARTMENT DIMENSIONS		DOOR OPENING SIZES	
COMP #		LT & RT	
R1	63" WIDE X 61" HIGH X 28" DEEP	L2 & R2	57" WIDE X 27" HIGH X 28" DEEP
R2	57" WIDE X 27" HIGH X 28" DEEP	L3 & R3	43" WIDE X 55" HIGH X 17 7/8" DEEP
R3	43" WIDE X 55" HIGH X 17 7/8" DEEP	R4S	

UNITS: OUNCES = 283.5 GRAMS; POUNDS = 453.59 GRAMS; KILOGRAMS = 2.2046 LBS; METERS = 3.2808 FEET			
TO: ENRANCER ARE NOT COMPLIANT			
DECIMAL ANGULAR: 1/16" = 0.0625"			
FRACTIONS: 1/16" = 0.0625"			
This copyright of this drawing and design and the right of reproduction herein is held by ALEXIS FIRE EQUIPMENT CO. ALL RIGHTS RESERVED.			
DESIGN: M. THINKHAM	DRAWING NO: 1217119	SIZE: 11" X 17"	CHECKED BY: _____
ALEXIS FIRE EQUIPMENT CO. P.O. BOX 649, ALEXIS, ILLINOIS 62412		MOD RIV PUMPER	
LOUISE VOL FIRE DEPT		LOUISE, TX	
CONTRACT # 2882		P-Y-17	
SHEET 1 OF 2			