

78-FOOT 3-SECTION REAR MOUNT AERIAL LADDER



CITY OF PEKIN FIRE DEPARTMENT PEKIN, ILLINOIS

TECHNICAL SPECS

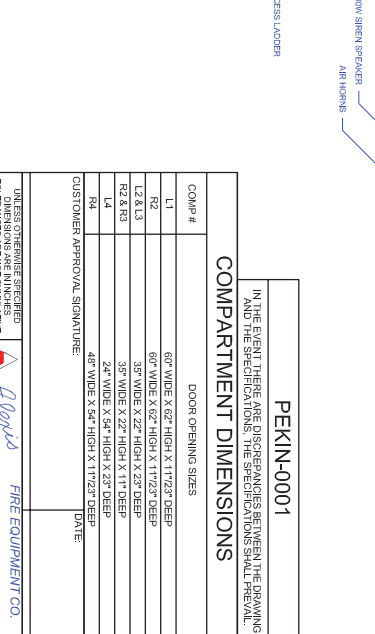
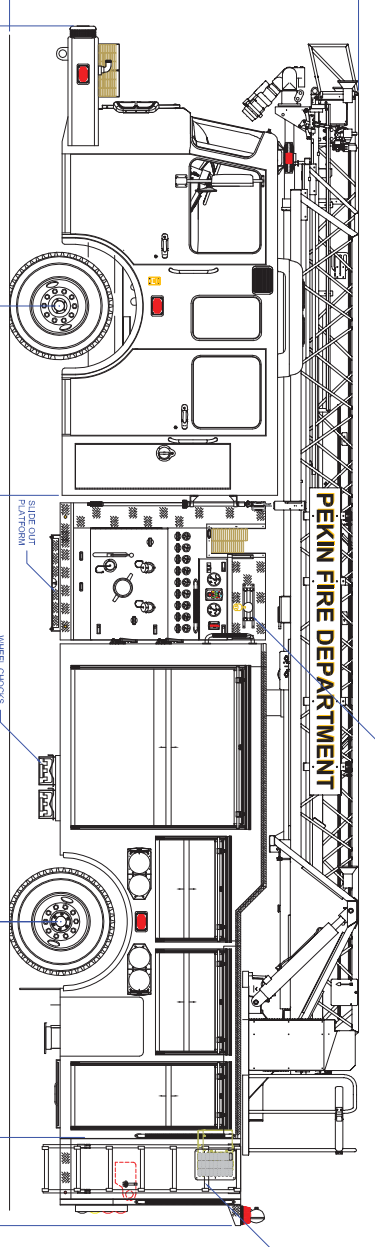
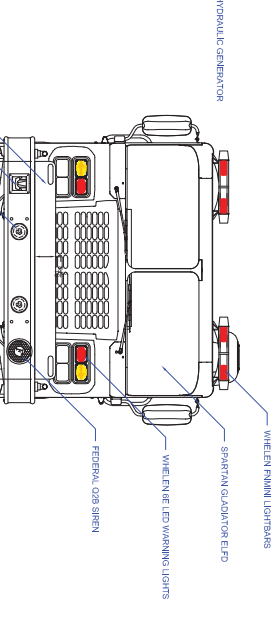
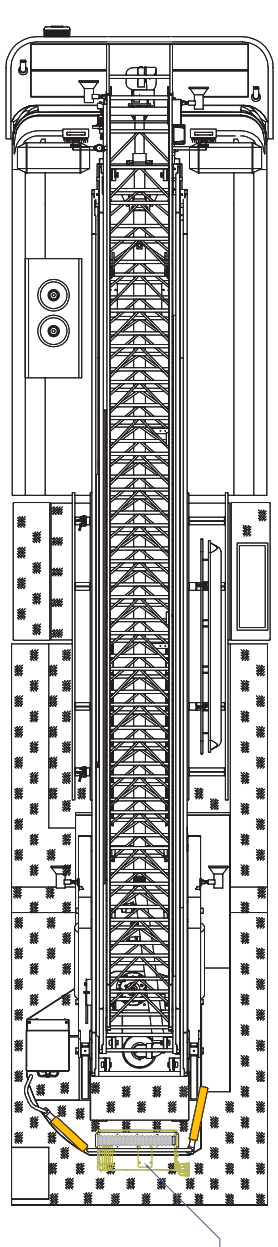
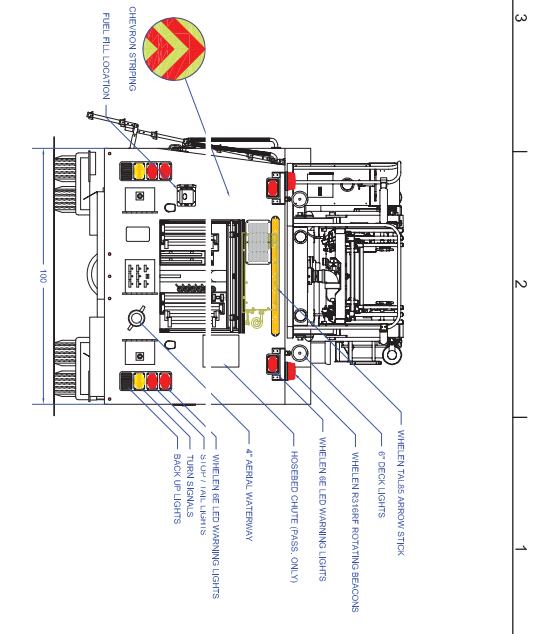
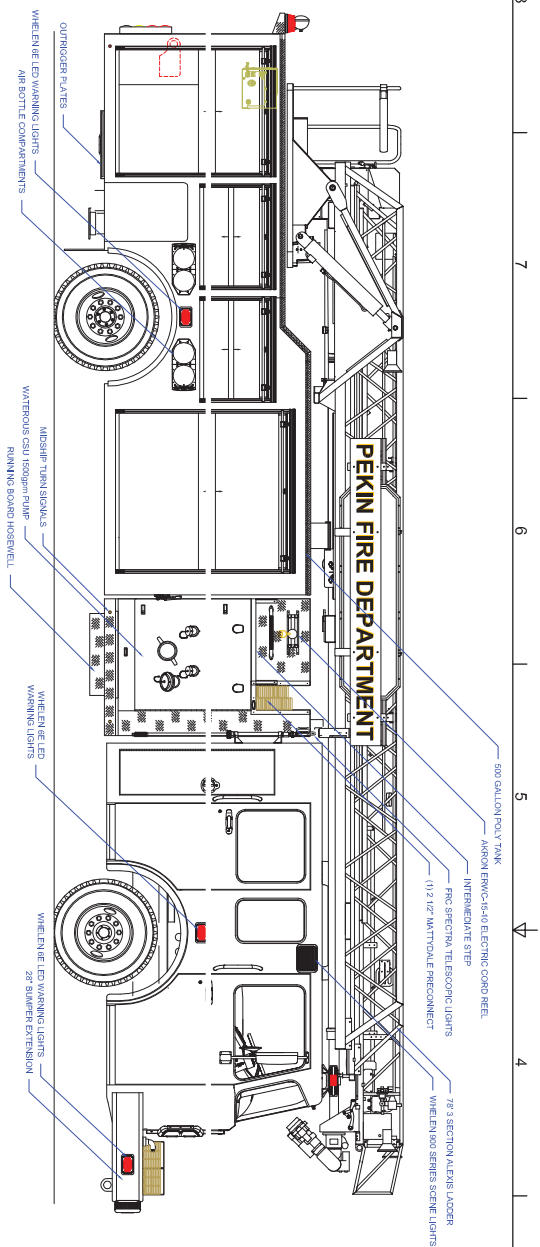
- Spartan Gladiator ELFD flat roof Chassis
- Cummins ISX12, 450-HP Diesel Engine
- Allison 4000 EVS Automatic Transmission
- Heavy Duty 3/16" Aluminum Body with Amdor brand Roll Up Doors
- 500-Gallon Poly Tank
- Waterous CSU 1500-GPM Pump with left side operator's panel
- Four (4) 2 1/2" Discharges, two (2) each side
- Two (2) 4" Discharges, one (1) right side and one (1) rear feeding waterway
- Akron remote controlled electric monitor at end of ladder
- One (1) 2 1/2" Gated Suction, left side
- One (1) 2 1/2" Mattydale Preconnect, top of pump module
- 28" Front bumper extension with two (2) 1 1/2" Preconnects
- EMS cabinet with roll up doors and shelves, cab interior rear wall
- Free floating running board hose well, right side
- Four (4) Dual bottle Air Bottle compartments, two (2) each side
- Ladder and Pike pole storage in torque box with rear access
- FireCom Intercom system
- Kussmaul 1200 on-board battery charger with Auto Eject shoreline
- Two (2) Whelen 12-volt LED scene lights, one (1) each side of cab
- Two (2) Unity deck lights, rear
- Two (2) FRC Evolution 12/24-volt LED telescopic lights, one (1) each side
- Onan 6-kW Hydraulically driven Generator with 120-volt system
- Two (2) Akron electric cord reels with cord and junction box, one (1) each side
- Federal Q2B mechanical Siren, front bumper
- Whelen Electronic Siren with 100-watt Cast Products speaker
- Two (2) Air Horns, front bumper
- Whelen LED Warning Light Package
- Diamond Grade Chevron striping, rear
- 11' 4" Overall height
- 39' 1" Overall length
- 241" Wheelbase
- 167" Cab to Axle
- 23,000 FAWR
- 33,000 RAWR
- 56,000 GVWR



To view more photos,
visit www.AlexisFire.com

WE WOULD LIKE TO THANK THE
CITY OF PEKIN FIRE DEPARTMENT
FOR THEIR BUSINESS.





PEKIN-0001

IN THE EVENT THERE ARE DISCREPANCIES BETWEEN THE DRAWING AND THE SPECIFICATIONS, THE SPECIFICATIONS SHALL PREVAIL.

COMPARTMENT DIMENSIONS

COMP #	DOOR OPENING SIZES
L1	60" WIDE X 62" HIGH X 11'12.5" DEEP
L2	60" WIDE X 62" HIGH X 11'12.5" DEEP
L2 & L3	35" WIDE X 22" HIGH X 23" DEEP
R2 & R3	35" WIDE X 22" HIGH X 11" DEEP
L4	24" WIDE X 54" HIGH X 23" DEEP
R4	48" WIDE X 54" HIGH X 11'12.5" DEEP

CUSTOMER APPROVAL SIGNATURE: _____ DATE: _____

UNLESS OTHERWISE SPECIFIED, DIMENSIONS ARE IN INCHES.

TOTAL LENGTH: 78'0" (19.81m)
 TOTAL WIDTH: 8'6" (2.59m)
 HEIGHT: 10'0" (3.05m)
 FRONTAL AREA: 86.4 sq ft (8.01 sq m)
 FRONTAL AREA: 116 sq ft (10.73 sq m)
 METRIC ± 1.6 mm

The copyright of this drawing and design and the right of reproduction here is owned by Alexis Fire Equipment Co. All other drawings in and designs to make are reserved by Alexis Fire Equipment Co.

78' ALEXIS LADDER
 PEKIN FIRE DEPARTMENT
 PEKIN, ILLINOIS

FIRE EQUIPMENT CO.
 P.O. BOX 569 ALEXIS, ILLINOIS 61412

DATE: 07/16/12

SIZE: 36" X 60" X 30"
 CONTRACT # 2193 SHEET 1 OF 2

REV#	DESCRIPTION	DATE	BY	CHKD	APP'D
01	CONTRACT # 2193	07/16/12	MELISSA TINKHAM	DAVID	MELISSA TINKHAM

REVISION HISTORY

DATE: 07/16/12

BY: MELISSA TINKHAM

CHKD: DAVID

APP'D: MELISSA TINKHAM

CONTRACT # 2193

SHEET 1 OF 2