

3000-GALLON ELLIPTICAL TANKER



ELIZABETH COMMUNITY FIRE PROTECTION DISTRICT ELIZABETH, ILLINOIS

TECHNICAL SPECS

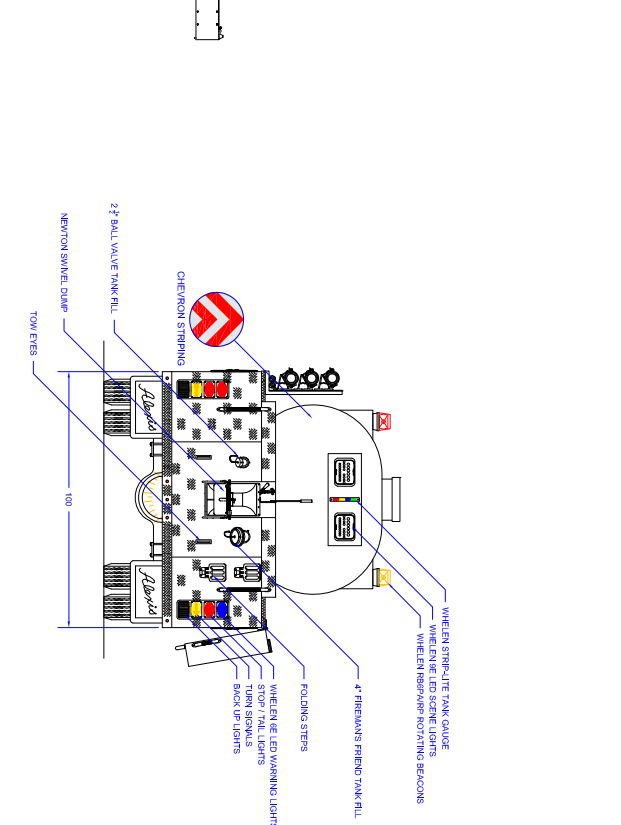
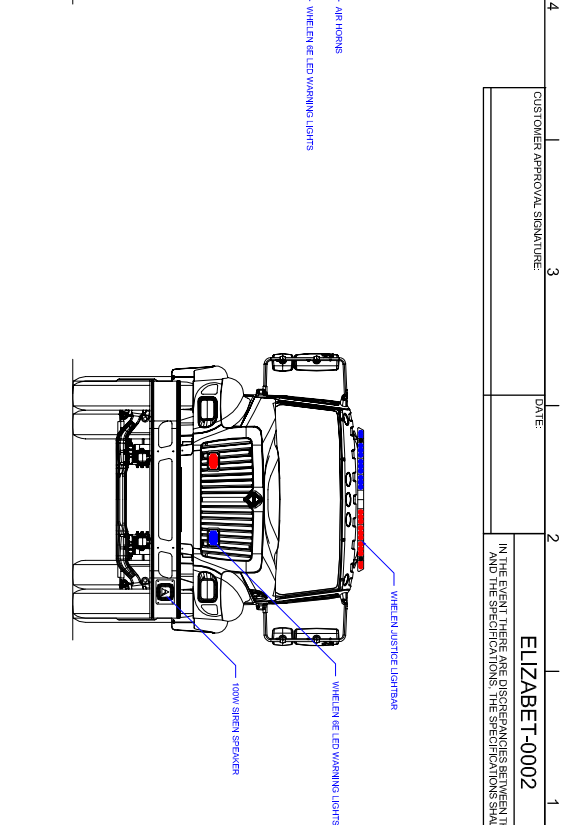
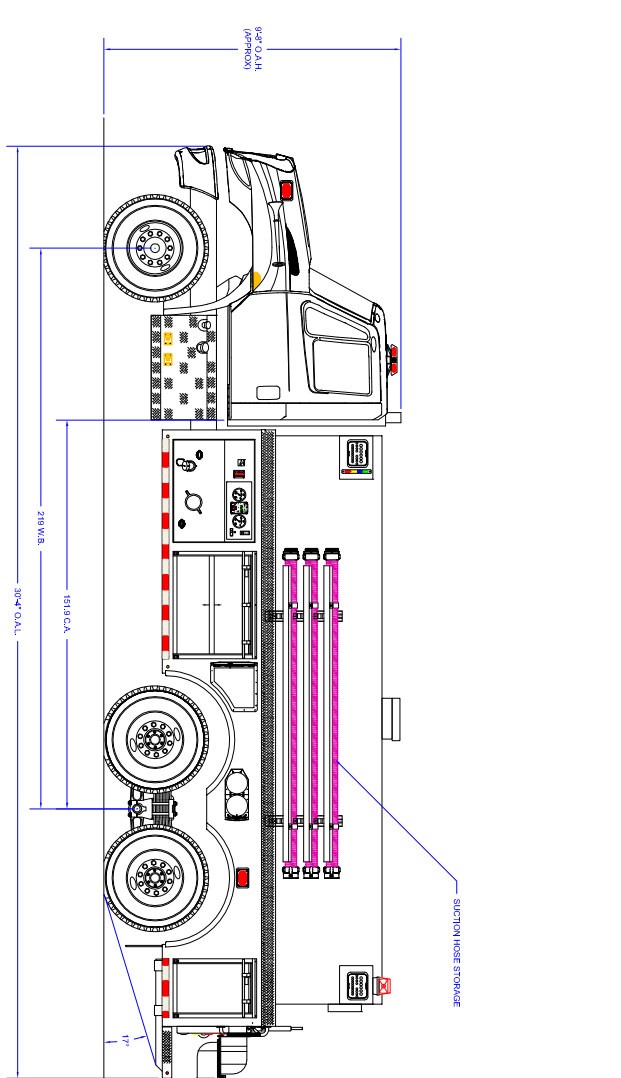
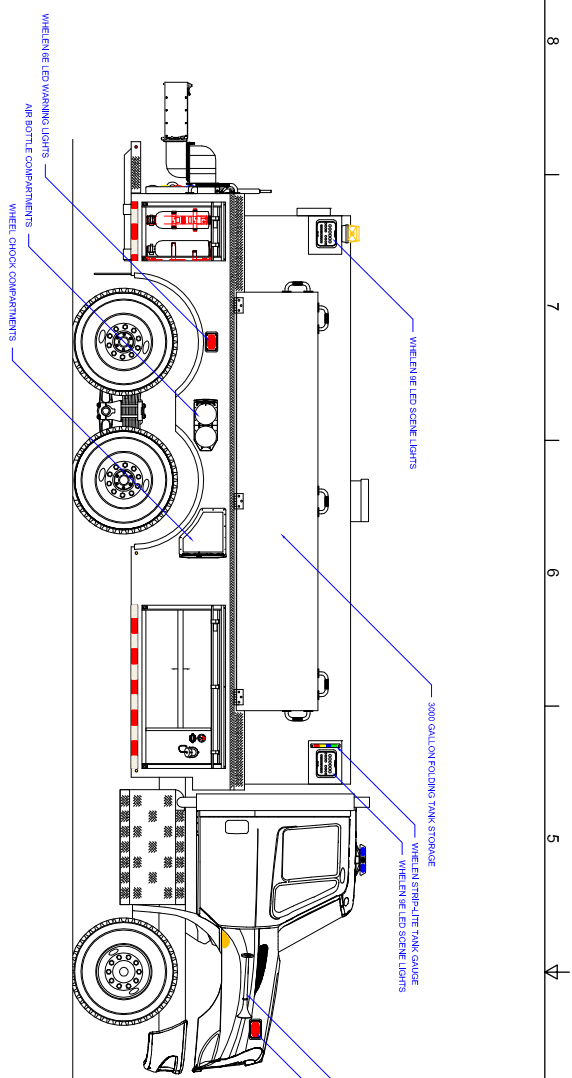
- International 7500 2-Door Tandem Chassis
- Navistar N10, 350-HP Diesel Engine
- Allison 3000 EVS Automatic Transmission
- Heavy Duty 3/16" Aluminum Body
- ROM Roll Up Doors
- 3000-Gallon Poly Elliptical Tank with stainless steel jacket
- One (1) 2 1/2" and one (1) 4" Tank fill, rear
- One (1) 10" square Newton manual swivel tank dump with 36" extension
- Waterous CLVK 500-GPM Pump
- Under Tank left side pump operator's panel
- Two (2) 2 1/2" Discharges, one (1) each side
- Two (2) Dual bottle Air bottle compartments, one (1) each side wheel well
- Two (2) Wheel chock compartments, one (1) each side wheel well
- Two (2) Walk-away Air Pack brackets, left side compartment
- One (1) Hinged Folding Tank bracket for 3000-gallon tank, right side
- Three (3) Suction hose storage gutters, left side
- Two (2) Pike pole storage tubes, left side
- Progressive Dynamics on-board battery charger
- Kussmaul Super Auto Eject 120-volt shoreline
- Kussmaul Air Eject
- Floor mounted console for emergency switches with map/binder storage, cab
- Audiovox back-up Camera with 7" color monitor and right side view camera
- Whelen Electronic Siren with 100-watt Whelen speaker
- Two (2) Air Horns, one (1) each side of hood
- Six (6) Whelen LED Scene lights, two (2) each side and two (2) rear
- Whelen LED Warning Light Package
- Diamond Grade Chevron pattern striping, rear
- 9' 8" Overall height
- 30' 4" Overall length
- 219" Wheelbase
- 151.9" Cab to Axle
- 16,000 FAWR
- 46,000 RAWR
- 62,000 GVWR



To view more photos,
visit www.AlexisFire.com

WE WOULD LIKE TO THANK THE ELIZABETH
COMMUNITY FIRE PROTECTION DISTRICT
FOR THEIR BUSINESS.





COMPARTMENT DIMENSIONS

COMP #	DOOR OPENING SIZES
L1	38" WIDE X 28" HIGH X 25" DEEP
L2	19" WIDE X 28" HIGH X 25" DEEP
R1	60" WIDE X 28" HIGH X 25" DEEP
R2	19" WIDE X 28" HIGH X 25" DEEP

REVISION HISTORY	DATE	OWN
SALES UPDATES	04/01/14	2249

Pump Info	Apparatus Type
Control Location: Under Tank	Tanker
Pump Drive: PTO	Chassis: Navistar 2-Door
Pump Make: Waukesha	Tank Capacity: 3000
Pump Model: CL-Series	Material: Aluminum
Pump GPM: 500	

UNLESS OTHERWISE SPECIFIED	
DIMENSIONS ARE IN INCHES	
TOLERANCES ARE AS FOLLOWS:	
FINISH: 4-0.002	ANGLE: 48 ± 0.05
PERFECT HOLE: ± 0.010	WAVE: ± 0.010
THE WEIGHT OF THIS DRAWING AND ANY OTHER DRAWINGS AND THE RIGHT OF REPRODUCTION HEREIN ARE RESERVED AND NO PARTS OR EQUIPMENT CAN BE REPRODUCED OR ADAPTED TO MAKE NEW EQUIPMENT OR TO BE USED IN ANY MANNER WITHOUT THE WRITTEN PERMISSION OF ALEXIS FIRE EQUIPMENT CO.	
DESIGN: MELISSA TINKHAM	DATE: 04/01/14
DRAWN: MATT	SIZE: 30X60
CONTRACT #	2249
SHEET #	1 OF 2

ELIPTICAL TANKER
 ELIZABETH COMM. FIRE PROT. DIST.
 ELIZABETH, ILLINOIS
T-H19

CUSTOMER APPROVAL SIGNATURE: _____ DATE: _____
ELIZABET-0002
 IN THE EVENT THERE ARE DISCREPANCIES BETWEEN THE DRAWING AND THE SPECIFICATIONS, THE SPECIFICATIONS SHALL PREVAIL.