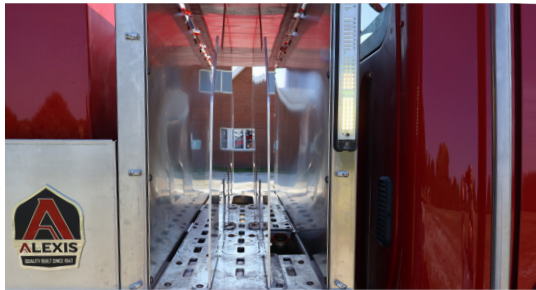


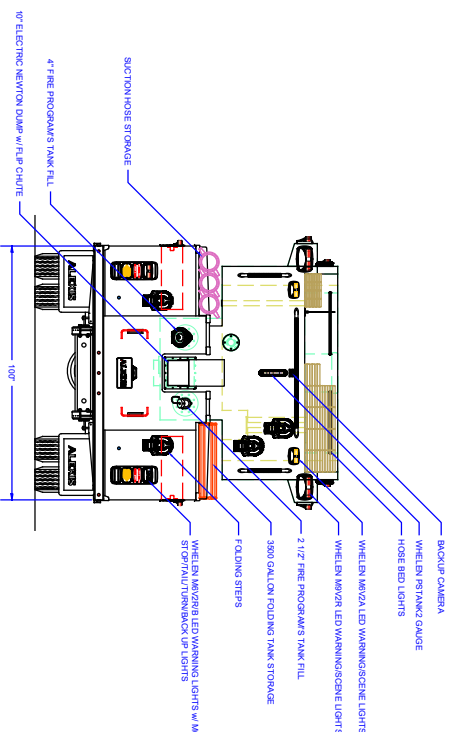
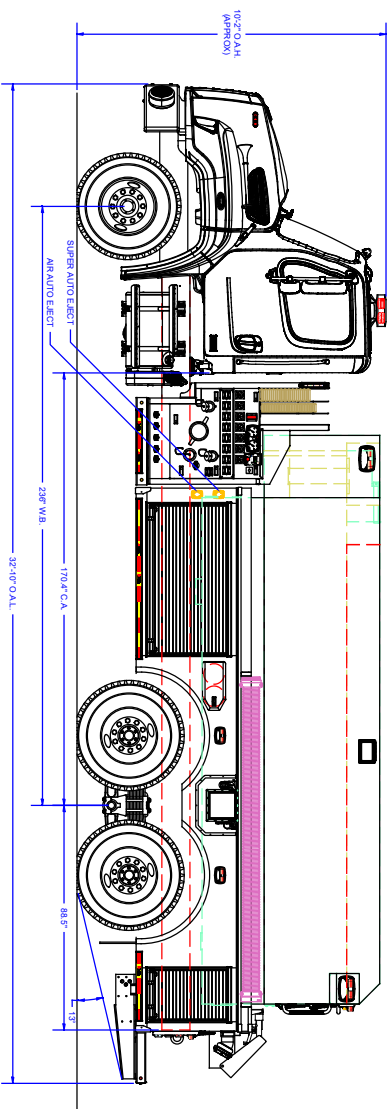
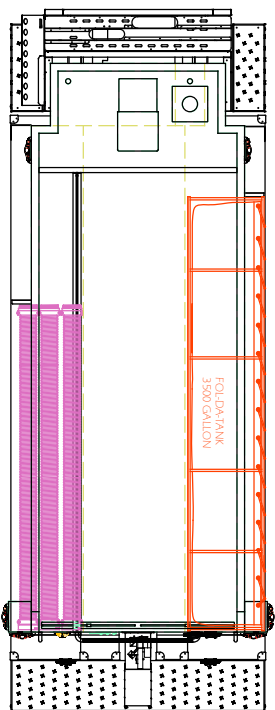
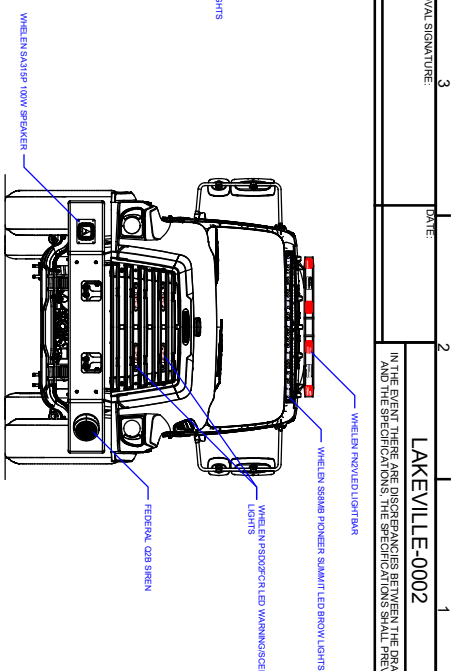
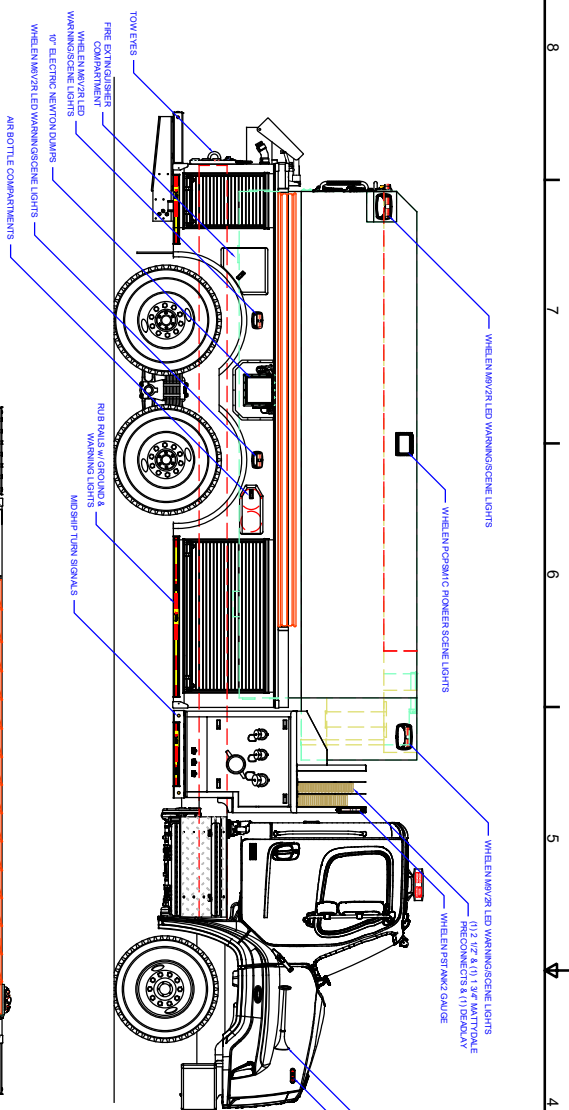
3000 GALLON TANKER #2572



TECHNICAL SPECIFICATIONS

- Freightliner 114SD 2-Door Chassis
- Detroit Diesel 450 HP DD13 Engine
- Allison 4000 EVS Automatic Transmission
- Heavy Duty Stainless Steel Body and Stainless Steel Subframe
- Stainless Steel Intermediate Pump Module with Stainless Steel Subframe
- Waterous CXVC 1500 GPM Midship Pump
- Trident Air Prime System
- FRC Pump Boss Max Pressure Governor
- FRC Tankvision Water Tank Level Gauge with Three (3) Whelen PSTANK Strip Lites
- Two (2) 6" Intakes, One (1) Each Side
- One (1) 2½" Gated Intake, Left Side
- Two (2) 2½" Discharges, Left Side and Two (2) 2½" Discharges, Right Side
- One (1) 3" Discharge adapted to 5" Storz, Right Side
- One (1) 1½" and One 2½" Crosslay Preconnects with Deadlay Hose Bed
- ROM Roll Up Doors
- Two (2) Dual Bottle Wheel Well Compartments
- One (1) Fire Extinguisher Wheel Well Compartment
- Fol-Da-Tank Storage for 3500 Gallon Fol-Da-Tank, Right Side Compartment Top
- Suction Hose Storage, Left Side Compartment Top
- 3000 Gallon Poly Wetside Tank with Wetside Hose Bed & Front Fill Tower
- One (1) 4" FirePrograms Tank Fill, Rear Left Side Adapted to 5" Storz and One (1) 2½" FirePrograms Tank Fill, Rear Right Side
- Three (3) 10" Newton Stainless Steel Electric Dumps, One (1) Each Side Between the Rear Wheels with 18" Electric Extensions and One (1) Rear with Flip Down Stainless Steel Chute
- 12 Volt Electrical System with NFPA Compliant Warning Light Package
- Progressive Dynamics Battery Charger, L1 Compartment
- Kussmaul 20 Amp Super Auto-Eject 120V Shoreline Connection, Left Front Body Post
- Kussmaul Auto Air Eject, Left Front Body Post
- Whelen LED Warning Light Package
- Whelen 200W Siren and 100W Speaker
- Whelen V Series Combo Warning and Scene Lighting, Each Side and Rear
- Two (2) Whelen PCPSM1B LED Scene Lights, One (1) Each Side
- One (1) Whelen Summit LED Brow Light
- Two (2) 10' Lengths of 6" Hard Suction Hose, One (1) 6" Low Level Strainer, and One (1) 3500 Gallon Aluminum Frame Fol-Da-Tank
- 10'-2" Overall Height
- 32'-10" Overall Length
- 236" Wheelbase
- 170.4" Cab to Axle
- 20,000 FAWR
- 46,000 RAWR
- 66,000 GVWR





REVISION HISTORY			
REV	DESCRIPTION	DATE	BY
01	SALES UPDATES	2/10/22	M

Pump Info:	
Control Location: Side	Apparatus Type: Tanker

COMPARTMENT DIMENDOOR OPENING SIZES

58" WIDE X 27" HIGH X 25" DEEP
19" WIDE X 27" HIGH X 25" DEEP
3

UNLESS OTHERWISE SPECIFIED
DIMENSIONS ARE IN INCHES
TOLERANCES ARE NOT CUMULATIVE

ALEXIS

FIRE EQUIPMENT CO.

P.O. BOX 549, ALEXIS, ILLINOIS 61412

TANKER
LAKEVILLE HOSE COMPANY

DRAWN J. HENNING		DATE 10/6/22	DWG NO T-M04	
MATERIAL 2		SIZE / SCALE D 1/2" = 1'	CONTRACT # 2572	SHEET 1 OF 2 1