

## 2000-GALLON TANKER #2468



### TECHNICAL SPECIFICATIONS

International HV607 Standard Cab Chassis  
Cummins 360 HP L9 Engine  
Allison 3000 EVS Automatic Transmission  
Heavy Duty Stainless-Steel Body and Sub-Frame  
Two (2) Person Cab  
Stainless-Steel Intermediate Pump Module  
Hale DSD150 Single Stage Split-Shaft 1500 GPM Pump  
Trident Air Prime System  
FRC Pump Boss Pressure Governor & Monitoring System  
Two (2) 6" Intakes, One (1) Each Side  
One (1) 2½" Gated Intake, Left Side  
Two (2) 2½" FirePrograms Tank Fills  
Two (2) 2½" Discharges, Left Side  
One (1) 2½" Discharge, Right Side  
One (1) 3" Discharge, Right Side Adapted to 5" Storz  
Two (2) 1½" Mattydale Preconnects, One (1) 2½" Mattydale Preconnect  
One (1) 10" Newton Stainless-Steel Manual Swivel Dump, Rear  
2000-Gallon Poly Tank  
Four (4) Folding Steps, Rear  
Wetside Hosebed with Rear Fill Tower

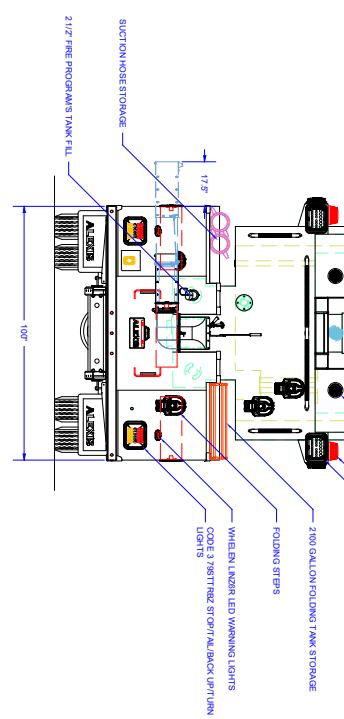
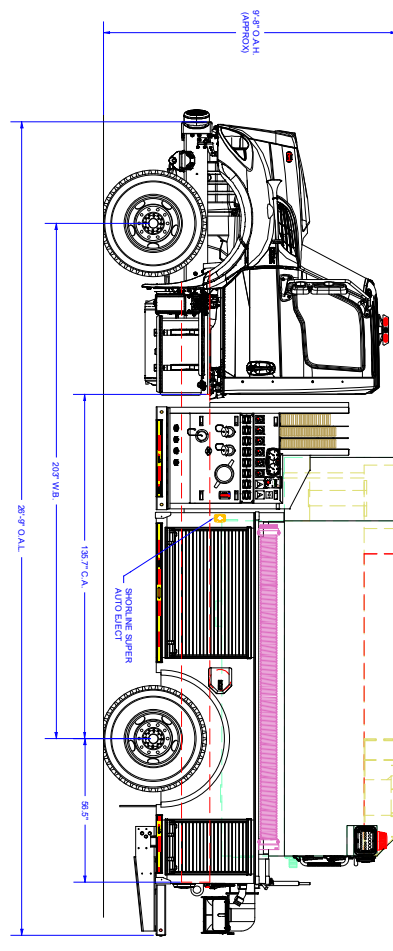
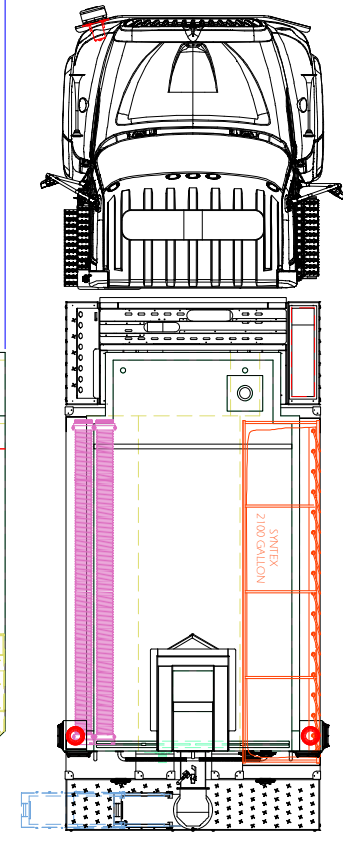
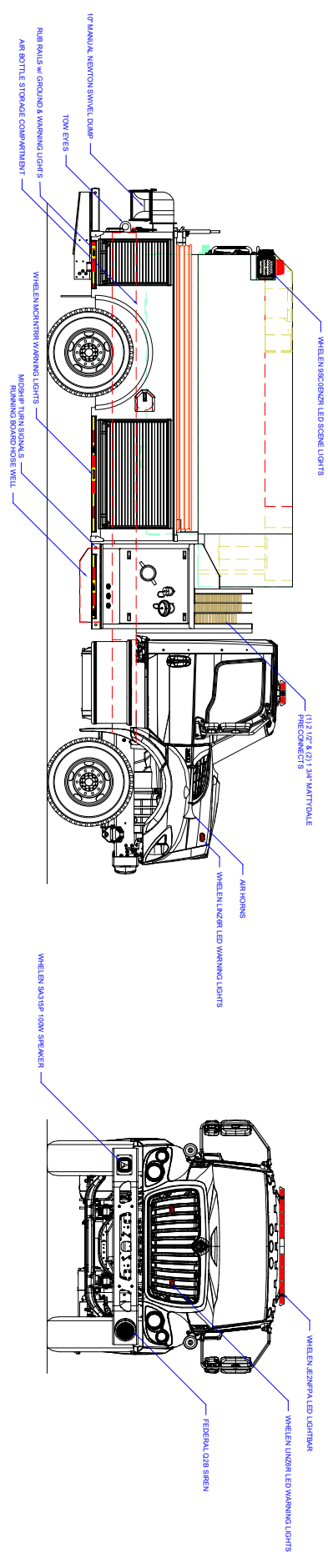
ROM Satin Finish Roll-Up Doors  
Two (2) Single Bottle Wheel Well Compartments, One (1) Each Side Ahead  
Progressive Dynamics Battery Charger, L1 Compartment  
Kussmaul 20 Amp Super Auto-Eject 120V Shoreline Connection, Left Front Body Post  
Whelen Warning and Scene Light Package  
Federal Q2B Siren Recess Mounted  
Two (2) 10' x 6" Hard Suction Hoses, On Left Compartment Tops  
One (1) 2100-Gallon Folding Tank, On Right Compartment Tops  
9' 8" Overall Height  
26' 9" Overall Length  
203" Wheelbase  
135.7 Cab to Axle  
16,000 FAWR  
30,000 RAWR  
46,000 GVWR



CUSTOMER APPROVAL SIGNATURE: \_\_\_\_\_ DATE: \_\_\_\_\_

**APE-2468\_01**

IN THE EVENT THERE ARE DISCREPANCIES BETWEEN THE DRAWING AND THE SPECIFICATIONS THE SPECIFICATIONS SHALL PREVAIL.



**COMPARTMENT DIMENSIONS**

REV	DESCRIPTION	DATE	DRAWN	PUMP MAKE/ MODEL	MATERIAL	COMP #	DOOR OPENING SIZES
1	CHANGE ORDERS 1 & 8	06/15/20	JTB	Pump GPM: 1500	Stainless Steel	123 RZ	48" WIDE X 27" HIGH X 28" DEEP 18" WIDE X 27" HIGH X 28" DEEP
<b>Revision History</b>							
<b>Control Location: Under Tank</b>							
<b>Pump Make: Wildcat</b>							
<b>Chassis: Navistar 2000</b>							
<b>Tank Capacity: 2100</b>							
<b>Apparatus Type: Tanker</b>							

UNLESS OTHERWISE SPECIFIED TO ENHANCES ARE NOT TO BE CONSIDERED

FRACOMAL 2 TIRE METRIC 4.8 mm

**ALEXIS FIRE EQUIPMENT CO.**  
P.O. BOX 549, ALEXIS, ILLINOIS 61412

**HEMPFIELD TOWNSHIP VFD**  
GREENVILLE, PA

SIZE SCALE: DRAWING  
D 1/2" = 1'  
CONTRACT #: 2468

**T-140**