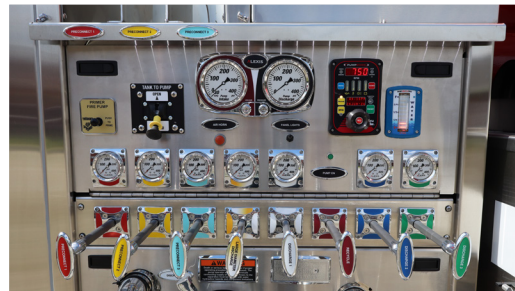


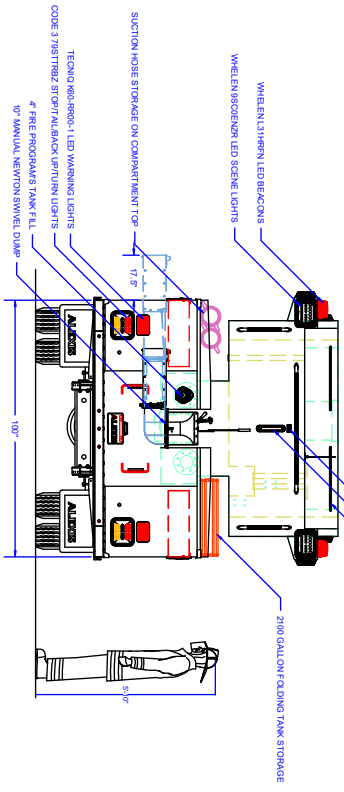
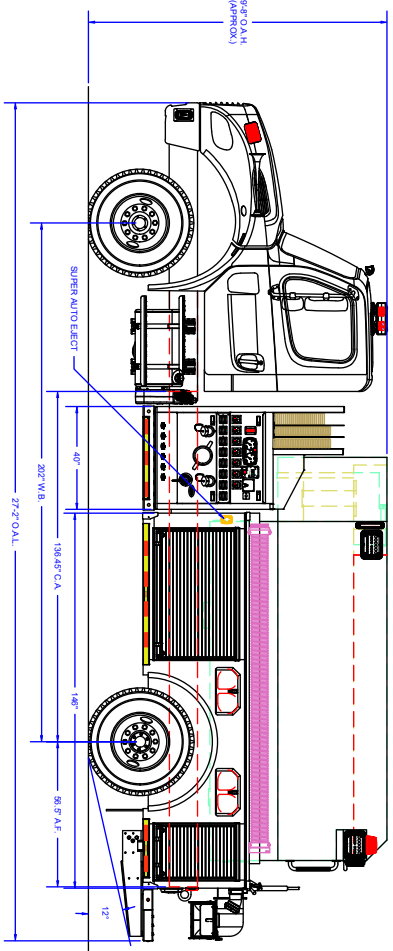
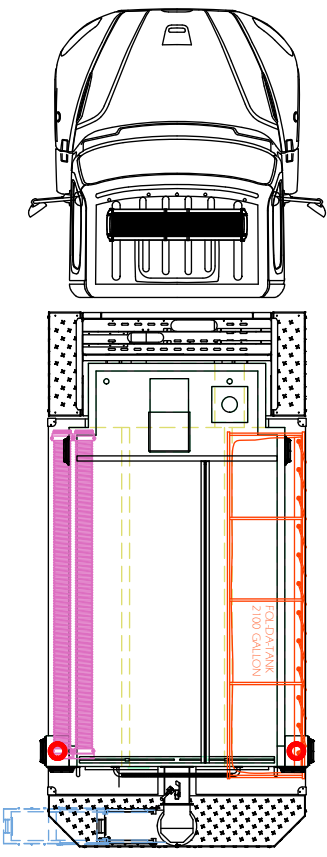
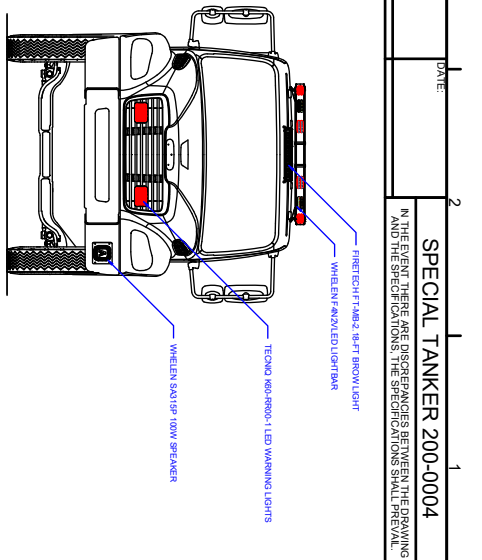
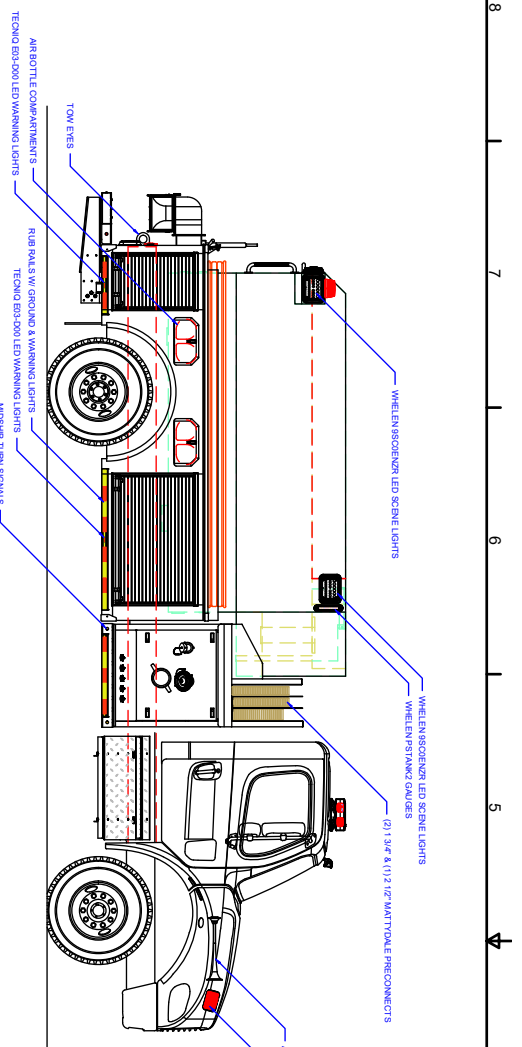
DEMO 2000 GALLON TANKER #2675



TECHNICAL SPECIFICATIONS

- Freightliner M2-112 2-Door Chassis
- Cummins 450 HP L9 Engine
- Allison 3000 EVS Automatic Transmission
- Heavy Duty Stainless Steel Body and Stainless Steel Subframe
- Stainless Steel Intermediate Pump Module
- Waterous CXVPA 1250 GPM PTO Pump
- Trident Air Prime System
- FRC Pump Boss Pressure Governor
- FRC Tankvision Water Tank Level Gauge with Three (3) Whelen PSTANK2 Strip Lites
- Two (2) 6" Intakes, One (1) Each Side
- One (1) 2½" Gated Intake, Left Side
- Two (2) 2½" Discharges, Left Side and One (1) 2½" Discharge, Right Side
- One (1) 3" Discharge Adapted to 5" Storz, Right Side
- Two (2) 1½" and One (1) 2½" Crosslay Preconnects
- Four (4) Dual Bottle Wheel Well Compartments
- ROM Roll Up Doors
- Fol-Da-Tank Storage for 2100 Gallon Fol-Da-Tank, Right Side Compartment Top
- Suction Hose Storage, Left Side Compartment Top
- 2000 Gallon Poly Wetside Tank with Wetside Hose Bed & Front Fill Tower
- One (1) 4" FirePrograms Tank Fill, Rear Left Side Adapted to 5" Storz
- One (1) 10" Newton Stainless Steel Swivel Dump with 36" Manual Extension, Rear
- 12 Volt Electrical System
- Progressive Dynamics Battery Charger with Viair Compressor, L1 Compartment
- Kussmaul 20 Amp Super Auto-Eject 120V Shoreline Connection, Left Front Body Post
- Tecniq/Whelen LED Warning Light Package
- Whelen 200W Siren and 100W Speaker
- Six (6) Whelen 9S LED Scene Lights, Two (2) Each Side and Two (2) Rear
- One (1) FireTech HiViz 21" LED Brow Light





COMPARTMENT DIMENSIONS

Pump Info:		Apparatus Type: Tanker	
Control Location: Under Tank		Chassis: FREIGHTLINER M2 1122DR	
Pump Drive: FTIO		Tank Capacity: 2000	
Pump Make: Walworth		Material: Stainless Steel	
Pump Model: CXVPA			
Pump GPM: 1250			
Revision History:			
REV	DESCRIPTION	DATE	DWN
01	STANDARDS & LIGHTS CHANGED	2/18/24	MJT

UNLESS OTHERWISE SPECIFIED, DIMENSIONS ARE IN INCHES. TOLERANCES ARE NOT QUANTITATIVE.

ALEXIS FIRE EQUIPMENT CO.
P.O. BOX 549, ALEXIS, ILLINOIS 61412

TANKER
ALEXIS FIRE EQUIPMENT
ALEXIS, IL

DATE: 11/6/24
SIZE SCALE: DWGNO D 1/2" = 1'
MATERIAL: M. TINKHAM
CONTACT # 2875

CUSTOMER APPROVAL SIGNATURE: _____ DATE: _____

SPECIAL TANKER 200-0004

IN THE EVENT THERE ARE DISCREPANCIES BETWEEN THE DRAWING AND THE SPECIFICATIONS, THE SPECIFICATIONS SHALL PREVAIL.

8 7 6 5 4 3 2 1