

CUSTOM TOP MOUNT PUMPER

DALTON TOWNSHIP FIRE DEPARTMENT / MUSKEGON, MICHIGAN



ALEXIS



THANK YOU TO THE DALTON TOWNSHIP FIRE DEPARTMENT FOR THE PURCHASE OF THIS UNIT.

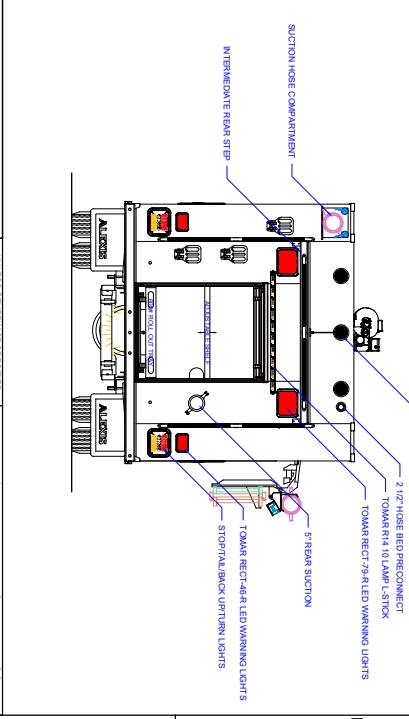
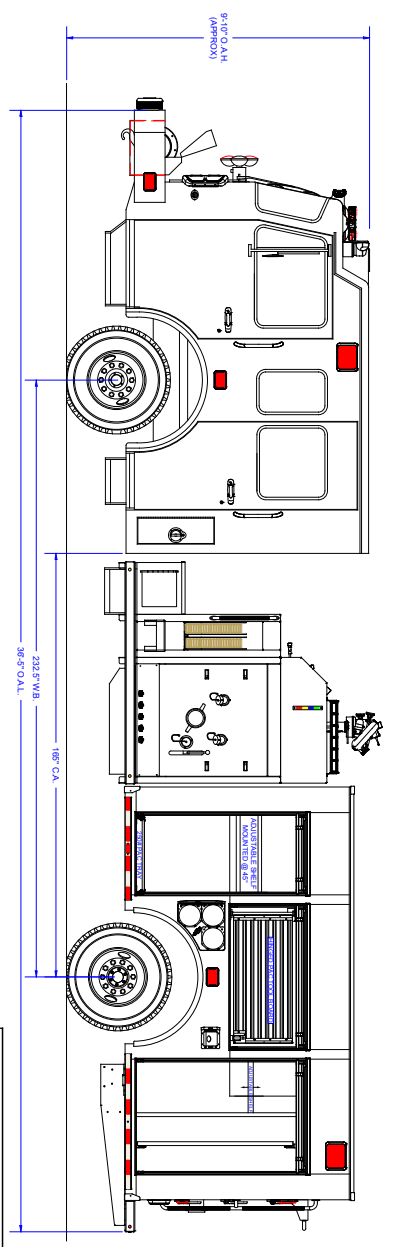
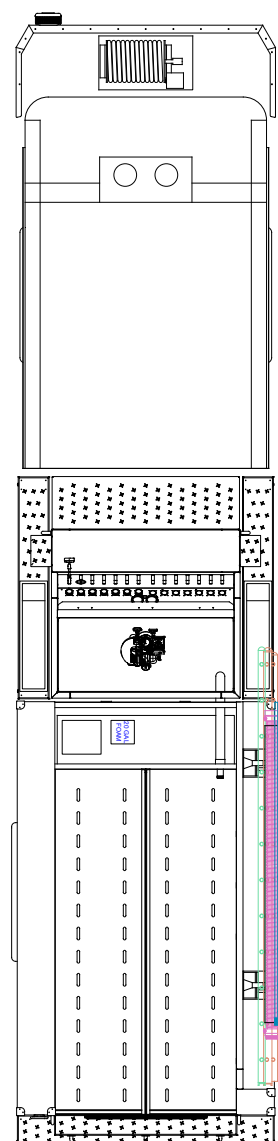
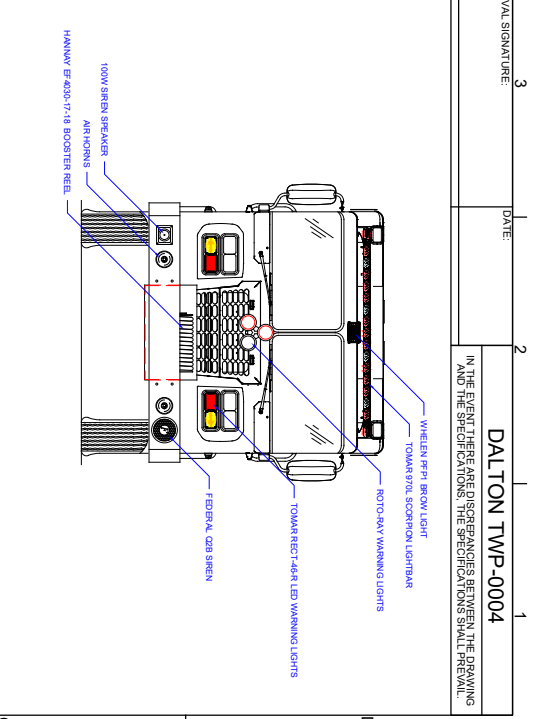
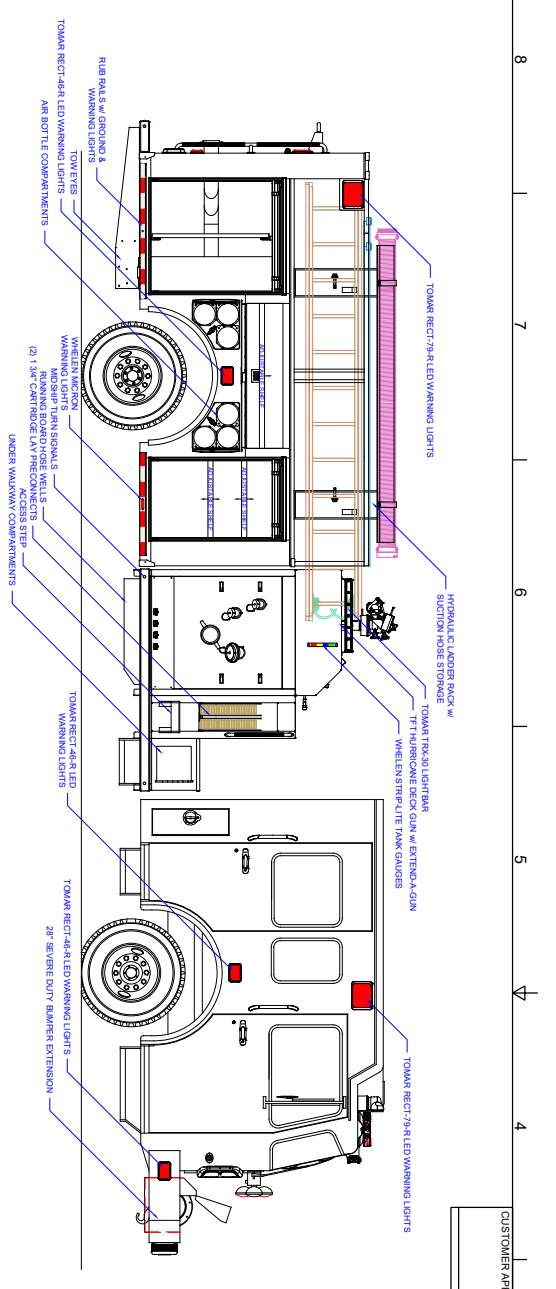


TECHNICAL SPECIFICATIONS

- Spartan Metro Star LFD 10" raised roof Chassis
- Cummins L9, 450-HP Diesel Engine
- Allison 3000 EVS Automatic Transmission
- Heavy Duty Stainless-steel Body and Sub-Frame
- ROM painted Roll Up Doors with right side hemmed door over rear wheel
- 28" Front bumper extension with Booster Reel for 75-ft of 1" hose
- EMS compartment with shelves and roll up door, cab rear wall
- Six (6) Person Cab seating with five (5) SCBA seats
- 1000-Gallon Poly Tank with 20-Gallon Foam Tank
- One (1) 2 1/2" FirePrograms Tank fill, right side pump panel
- Hale QMAX150, 1500-GPM Pump with operator's panel across top
- Three (3) 2 1/2" Discharges, two (2) left and one (1) right side
- Two (2) 1 1/2" Cartridge Lay Preconnects, front of pump module
- One (1) 2 1/2" Preconnect, front of hosebed
- Two (2) 3" Discharges, one (1) right side and one (1) over pump for deck gun
- One (1) Electric Booster Reel with 100-ft of 1" hose, front bumper
- Task Force Tips Crossfire monitor with stacked tips, stream straightener and base
- One (1) 2 1/2" Gated Suction, left side and one (1) 5" Suction, rear
- Foam Pro 1600 Foam System
- Two (2) Free floating running board hose wells, one (1) each side pump module
- Three (3) Triple bottle Air bottle compartments, one (1) left and two (2) right side
- Ziamatic electrically controlled Ladder Rack with Suction hose storage, right side
- One (1) Suction hose and Pike pole compartment, left side upper
- Three (3) Vertical Pull out tool boards, two (2) left side and one (1) right side
- Whelen Electronic Siren with Two (2) Cast products 100-watt speakers
- Federal Rumbler Siren
- Federal Q2B mechanical Siren, recess mount front bumper
- David Clark Wireless Intercom System
- Audiovox back-up Camera system with two (2) 7" color monitors
- Tomar, Fire Research and Whelen LED Scene Light Packages
- Tomar LED Warning Light Package
- Diamond Grade Chevron Pattern striping, front bumper and rear
- 9' 10" Overall height
- 36' 5" Overall length
- 239" Wheelbase
- 165" Cab to Axle



To view more photos and download spec sheet, please visit us at AlexisFire.com.



COMPARTMENT DIMENSIONS

COMP #	DOOR OPENING SIZES
L1	39" WIDE X 67" HIGH X 12'28" DEEP
L2	54" WIDE X 26" HIGH X 12'28" DEEP
L3	42" WIDE X 67" HIGH X 12'28" DEEP
R1	39" WIDE X 47" HIGH X 28" DEEP
R2	56" WIDE X 14" HIGH X 28" DEEP
R3	42" WIDE X 47" HIGH X 28" DEEP
REAR	39" WIDE X 44" HIGH X 37" DEEP

Pump Info:

Control location	Top
Pump Drive	Split Shaft
Chassis	Standard Z4 - RQC
Tank Capacity	1000
Pump Model	Omox
Pump GPM	1500

Revision	Description	Date	By
REV 02	SALES UPGRADES	6/1/18	ST
REV 01	SALES UPGRADES	5/20/18	MCT
REV 00	PRODUCTION HISTORY		

UNLESS OTHERWISE SPECIFIED, DIMENSIONS ARE IN INCHES AND DECIMALS ARE NOT COMPLIANT WITH THE ASME Y14.5-2018 STANDARD.

ALEXIS FIRE EQUIPMENT CO.
P.O. BOX 569, ALEXIS, ILLINOIS 61412

TOP MOUNT PUMPER
DALTON TWP FIRE DEPT
TWIN LAKE, MI

DATE: 10/19/17
SIZE SCALE: D
D 1/2" = 1'

MATERIAL: M/TNK/AML
DRAWING NO: P-W31
CONTACT # 2349
SHEET 1 OF 2

CUSTOMER APPROVAL SIGNATURE: _____ DATE: _____

IN THE EVENT THERE ARE DISCREPANCIES BETWEEN THE DRAWING AND THE SPECIFICATIONS, THE SPECIFICATIONS SHALL PREVAIL.

DALTON TWP-0004

A B C D 8 7 6 5 4 3 2 1 8 7 6 5 4 3 2 1