

3000-GALLON TANKER

COYNE CENTER FIRE PROTECTION & EMS DISTRICT / MILAN, ILLINOIS



ALEXIS



THANK YOU TO THE COYNE CENTER FIRE PROTECTION & EMS DISTRICT FOR THE PURCHASE OF THIS UNIT.

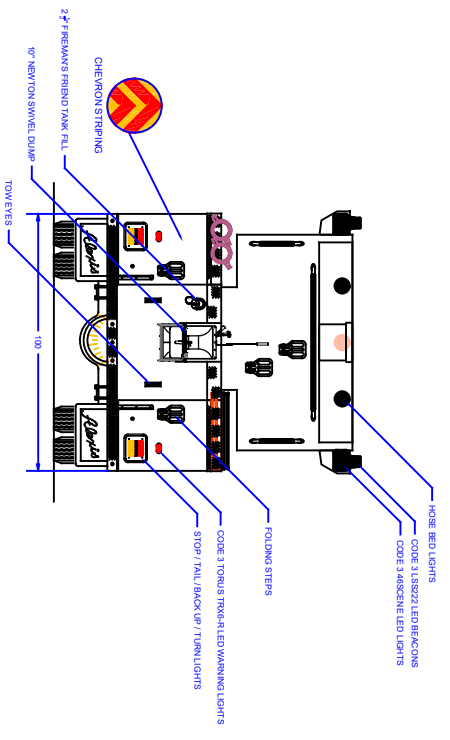
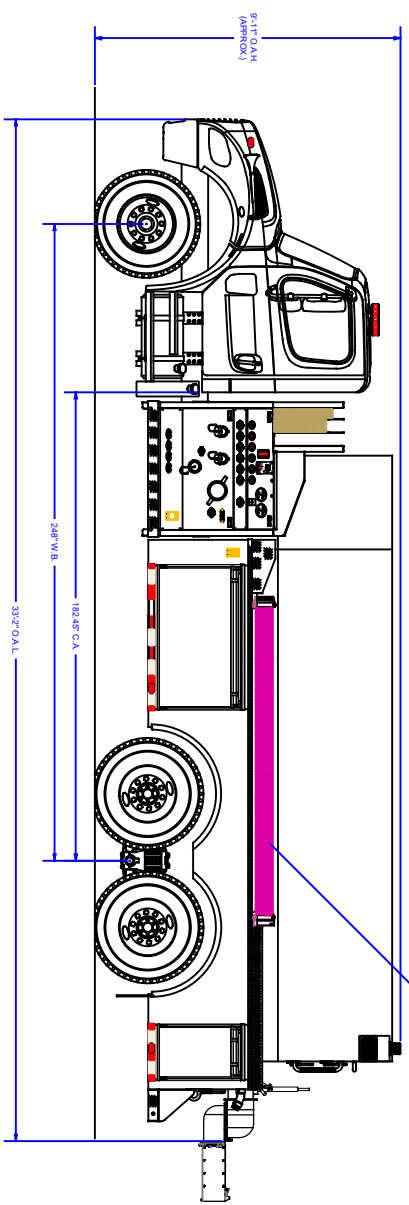
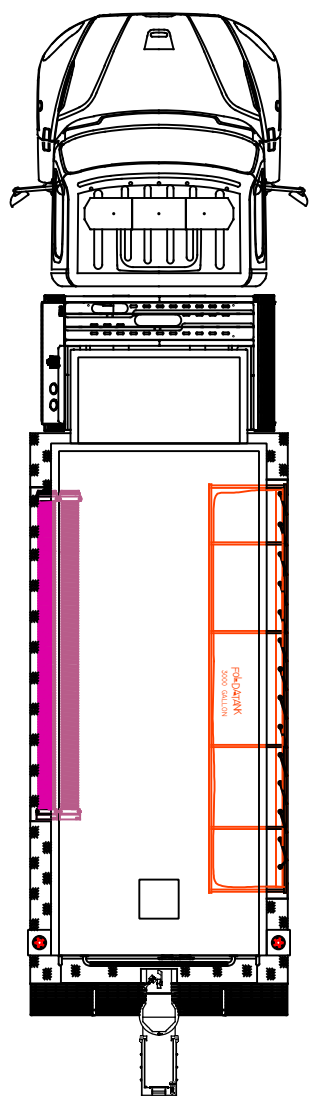
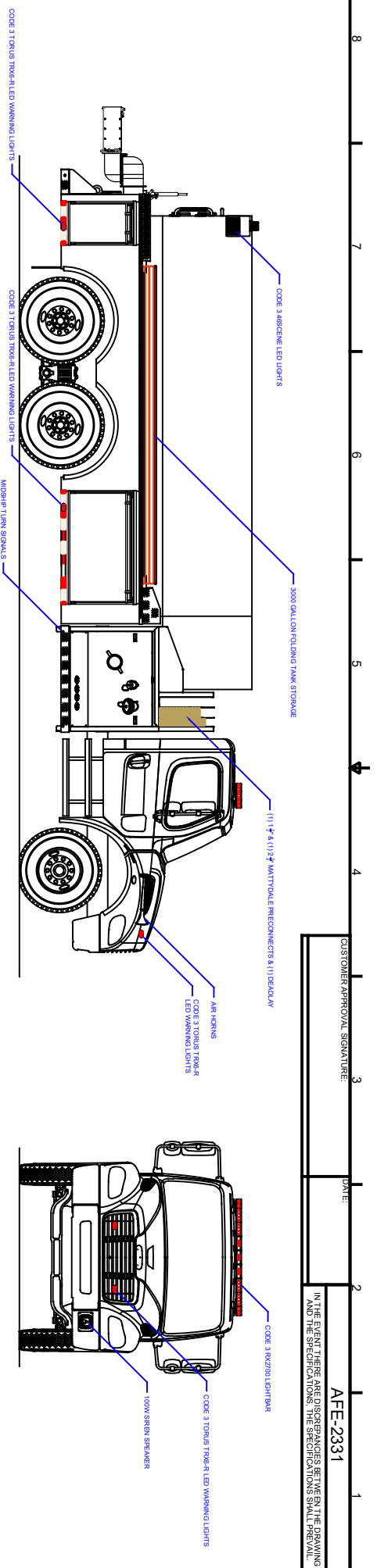


TECHNICAL SPECIFICATIONS

- Freightliner M2 106 Tandem 2-Door Chassis
- Cummins L9, 350-HP Diesel Engine
- Allison 3000 EVS Automatic Transmission
- Heavy Duty Stainless Steel Body and sub-frame
- ROM Roll Up Doors
- 3000-Gallon Poly Tank
- One (1) 4" Fireman's Friend Tank fill, rear
- One (1) Newton 10" square manual swivel dump with 36" extension
- Darley PSM 1250-GPM Pump
- Left side intermediate pump operator's panel
- Three (3) 2 1/2" Discharges, two (2) left side and one (1) right side
- One (1) 3" Discharge, right side
- One (1) 1 1/2" and one (1) 2 1/2" Mattydale Preconnects, behind cab
- One (1) 2 1/2" Gated Suction, left side
- Folding Tank storage, right side compartment top under tank "T"
- Suction hose storage, left side compartment top under tank "T"
- Ladder brackets and Pike pole tubes, right side
- Air coupling for external air compressor
- Floor mounted console for emergency switches, cab
- Progressive Dynamics on-board battery charger
- Blue Sea Systems 120-volt Sure Eject shoreline connection
- Code-3 Electronic Siren with 100-watt Code-3 speaker
- Code-3 LED Scene Light Package, one (1) each side and two (2) rear
- Code-3 LED Warning Light Package
- Diamond Grade Chevron pattern striping, rear
- 9' 11" Overall height
- 33' 2" Overall length
- 248" Wheelbase
- 182.45" Cab to Axle
- 16,000 FAWR
- 40,000 RAWR
- 56,000 GVWR



To view more photos and download spec sheet, please visit us at AlexisFire.com.



CUSTOMER APPROVAL SIGNATURE: _____ DATE: _____

IN THE EVENT THERE ARE DISCREPANCIES BETWEEN THE DRAWING AND THE SPECIFICATIONS, THE SPECIFICATIONS SHALL PREVAIL.

APE-2331

COMPARTMENT DIMENSIONS

Pump Info:		Apparatus Type: Tanker	
Control Location: Under Tank		Chassis: Freightliner 2-Door	
Pump Drive: DTG	Pump Make: Darby	Team Capacity: 3000	COMP #
Pump Model: PSM	Pump GPM: 1500	Material: Stainless Steel	L1 & R1
Material: Stainless Steel			L2 & R2
DOOR OPENING SIZES			
54" WIDE X 27" HIGH X 26" DEEP		18" WIDE X 27" HIGH X 26" DEEP	

UNLESS OTHERWISE SPECIFIED, DIMENSIONS ARE IN INCHES. LOG DIMENSIONS ARE IN LOGS. ALL DIMENSIONS ARE TO EXTERIOR UNLESS NOTED OTHERWISE.

ALEXIS FIRE EQUIPMENT CO.
 P.O. BOX 569, ALEXIS, ILLINOIS 61812

WETSIDE TANKER
 POYNE CENTER FIRE PROT & EMS DIST.
 MILAN, IL

SIZE: 12' x 1'
 CONTRACT # 2331