

CUSTOM TOP MOUNT PUMPER

CONGERVILLE RURAL FIRE PROTECTION DISTRICT / CONGERVILLE, IL



ALEXIS



THANK YOU TO THE CONGERVILLE RURAL FIRE PROTECTION DISTRICT FOR THE PURCHASE OF THIS UNIT.



TECHNICAL SPECIFICATIONS

- Spartan Metro Star LFD 10" Raised Roof Chassis
- Cummins L9, 450-HP Diesel Engine
- Allison 3000 EVS Automatic Transmission
- Heavy Duty Stainless Steel Body and Sub-Frame
- Painted ROM Roll Up Doors
- Six (6) Person Cab Seating with Five (5) SCBA Seats
- 24" Front Bumper Extension with One (1) 1½" Preconnect and 100' of 1¼" Hose
- Two (2) Custom EMS Compartments, Rear Wall of Cab
- 750-Gallon Poly Tank
- Darley PSM 1250-GPM Pump with Operator's Panel Across Top of Apparatus
- Two (2) 6" Non-gated Suction, One on Each Side
- One (1) 5" Non-gated Suction, Rear
- One (1) 2½" Gated Suction, Left Side
- Two (2) 2½" Discharges, One on Each Side
- Two (2) 3" Discharges, Left and Rear
- Two (2) 1½" Cartridge Lay Preconnects
- Two (2) Triple Bottle Air Bottle Compartments, Right Side
- One (1) Wheel Well Oil Dry Hopper, Left Side
- Four (4) Hinged Tool Boards, Left and Right Side Compartments
- Aluminum Pegboard in Compartments
- One (1) Backboard and Stokes Basket Storage Rack, Rear
- Ladder and Pike Pole Storage, Rear
- Four (4) Upper Storage Compartments, Body Roof
- Two (2) Hannay Hydraulic Hose Reels with 100' of Hose, Front Bumper
- One (1) Sho-Me Arrow Stick
- One (1) Audiovox Back-Up Camera System with 7" Color Monitor
- One (1) Federal Q2B Siren
- Whelen Warning Lights Package
- FireTech Scene Lights Package
- Diamond Grade Chevrons Pattern Stripping, Rear
- 10' 6" Overall height
- 34' 6" Overall length
- 203" Wheelbase
- 135.5" Cab to Axle
- 20,000 FAWR
- 27,000 RAWR
- 47,000 GVWR

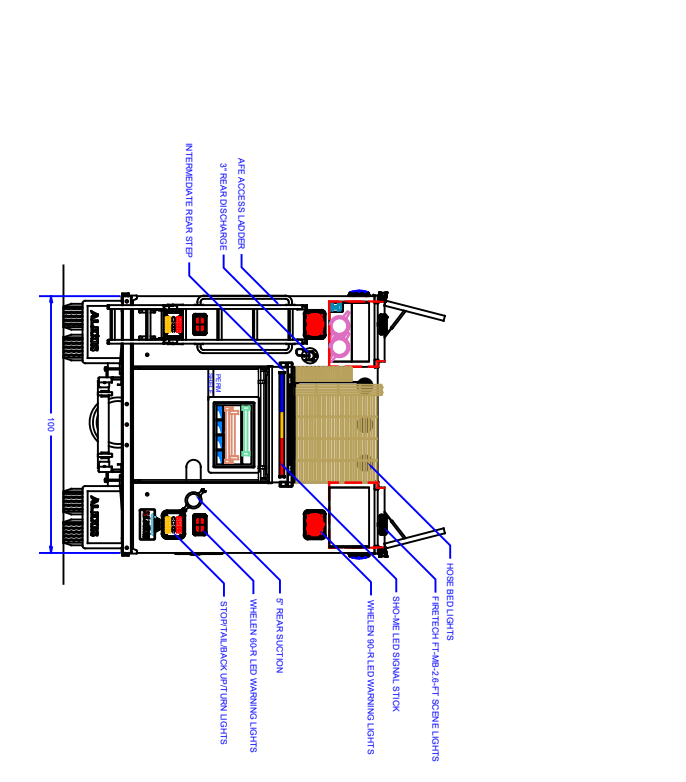
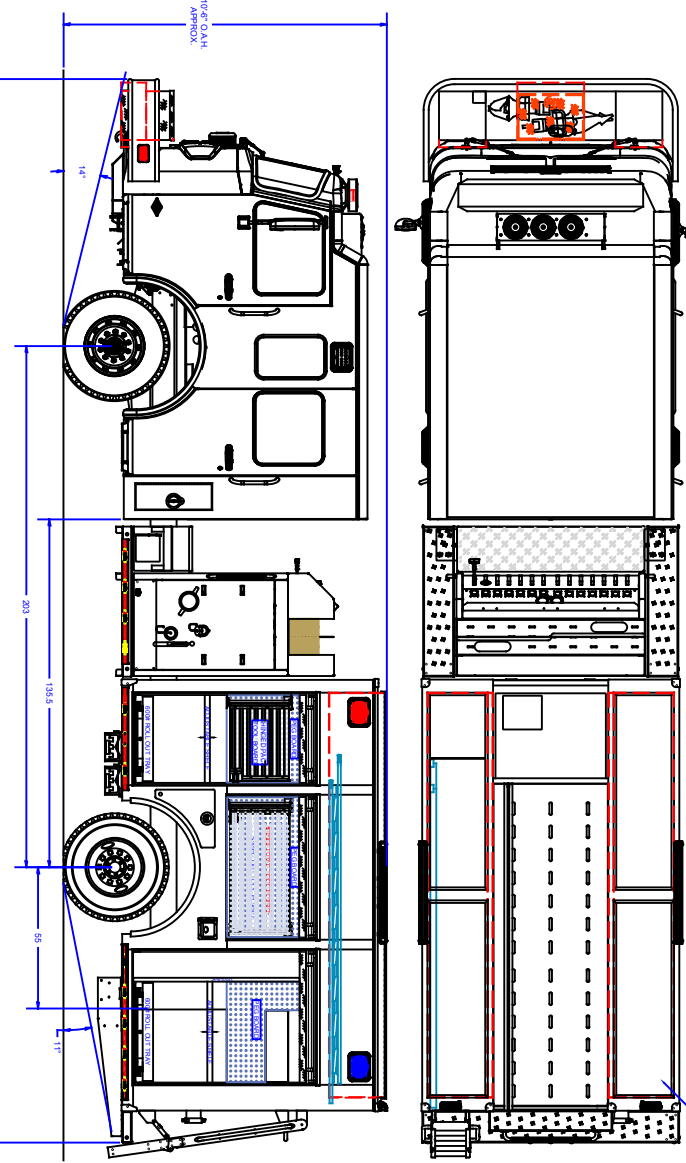
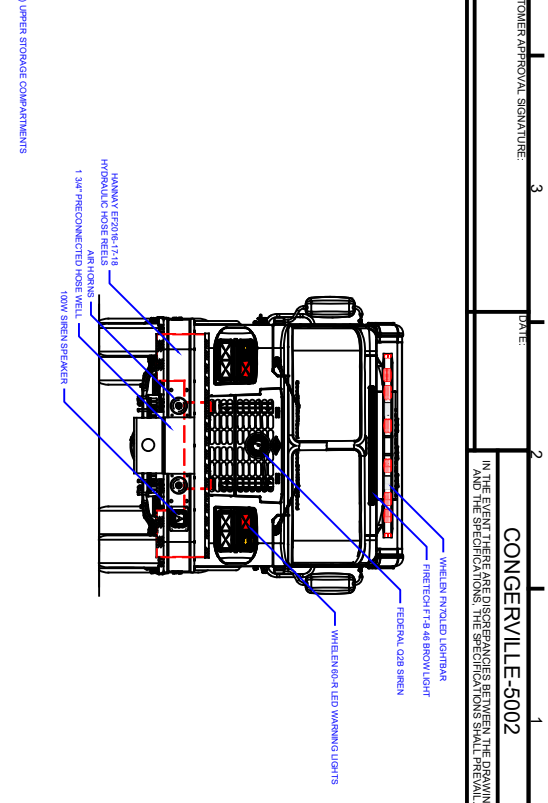
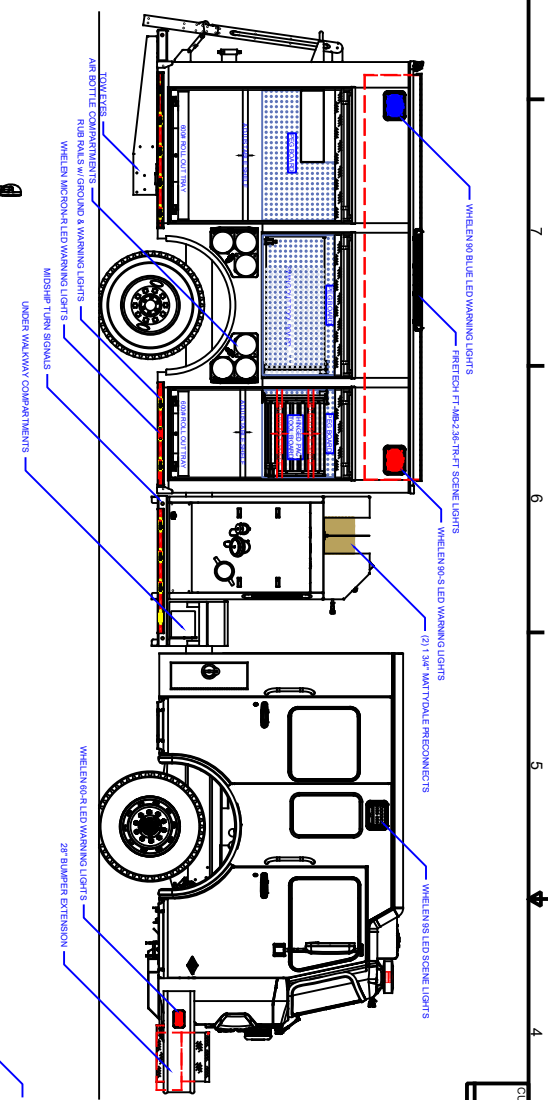


To view more photos and download spec sheet, please visit us at AlexisFire.com.

CUSTOMER APPROVAL SIGNATURE: _____ DATE: _____

CONGERVILLE-5002

IN THE EVENT THERE ARE DISCREPANCIES BETWEEN THE DRAWING AND THE SPECIFICATIONS, THE SPECIFICATIONS SHALL PREVAIL.



COMPARTMENT DIMENSIONS

COMP #	DOOR OPENING SIZES
L1	34" WIDE X 36" HIGH X 29" DEEP
L2	50" WIDE X 36" HIGH X 29" DEEP
L3	50" WIDE X 36" HIGH X 29" DEEP
R1	34" WIDE X 36" HIGH X 29" DEEP
R2	50" WIDE X 36" HIGH X 29" DEEP
R3	50" WIDE X 36" HIGH X 29" DEEP
REAR	43" WIDE X 48" HIGH X 37" DEEP

UNLESS OTHERWISE SPECIFIED, DIMENSIONS ARE IN INCHES. TO DIMENSIONS ARE NOT COMPLICATED. REFERENCE TO DRAWING SHEET 1 OF 2.

ALEXIS FINE EQUIPMENT CO.
 P.O. BOX 518 ALEXIS ILLINOIS 61412

PUMPER
 CONGERVILLE FPD
 CONGERVILLE, IL
 11/28/18
 R. OLSON
 1/2" = 1'
 CONTRACT # 2384
 SHEET 1 OF 2

ITEM NO.	DESCRIPTION	QUANTITY	UNIT PRICE	TOTAL PRICE
101	CHASSIS	1	20000.00	20000.00
102	SALES TAXES	1	1500.00	1500.00
103	DELIVERY	1	500.00	500.00
104	TRAINING	1	2500.00	2500.00
105	WARRANTY	1	1000.00	1000.00
106	SALES REPRESENTATIVE	1	2000.00	2000.00
107	SALES REPRESENTATIVE	1	2000.00	2000.00
108	SALES REPRESENTATIVE	1	2000.00	2000.00
109	SALES REPRESENTATIVE	1	2000.00	2000.00
110	SALES REPRESENTATIVE	1	2000.00	2000.00

ITEM NO.	DESCRIPTION	QUANTITY	UNIT PRICE	TOTAL PRICE
201	CHASSIS	1	20000.00	20000.00
202	SALES TAXES	1	1500.00	1500.00
203	DELIVERY	1	500.00	500.00
204	TRAINING	1	2500.00	2500.00
205	WARRANTY	1	1000.00	1000.00
206	SALES REPRESENTATIVE	1	2000.00	2000.00
207	SALES REPRESENTATIVE	1	2000.00	2000.00
208	SALES REPRESENTATIVE	1	2000.00	2000.00
209	SALES REPRESENTATIVE	1	2000.00	2000.00
210	SALES REPRESENTATIVE	1	2000.00	2000.00

UNLESS OTHERWISE SPECIFIED, DIMENSIONS ARE IN INCHES. TO DIMENSIONS ARE NOT COMPLICATED. REFERENCE TO DRAWING SHEET 1 OF 2.

ALEXIS FINE EQUIPMENT CO.
 P.O. BOX 518 ALEXIS ILLINOIS 61412

PUMPER
 CONGERVILLE FPD
 CONGERVILLE, IL
 11/28/18
 R. OLSON
 1/2" = 1'
 CONTRACT # 2384
 SHEET 1 OF 2