

3000-GALLON TANKER

CLARK COUNTY FIRE DEPARTMENT / LAS VEGAS, NEVADA



ALEXIS

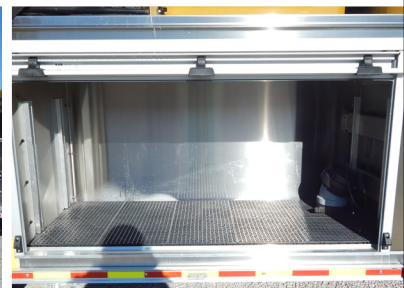


THANK YOU TO THE CLARK COUNTY FIRE DEPARTMENT FOR THE PURCHASE OF THIS UNIT.

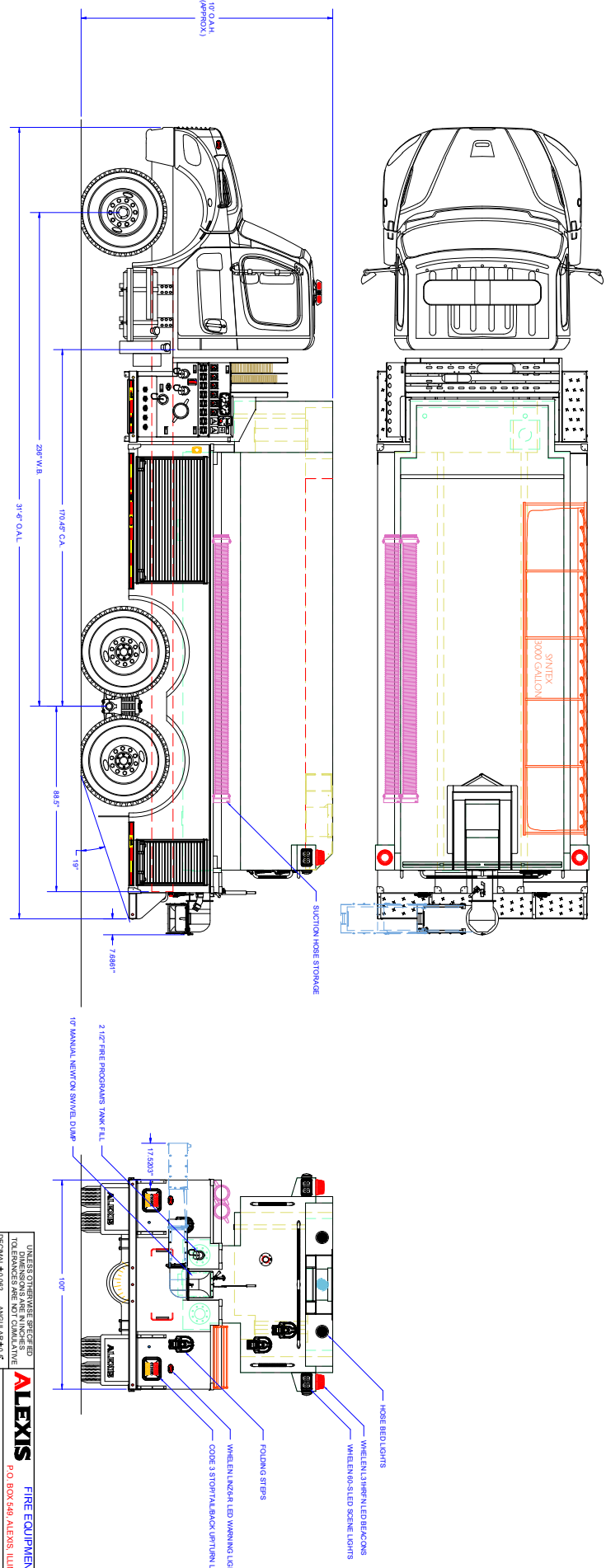
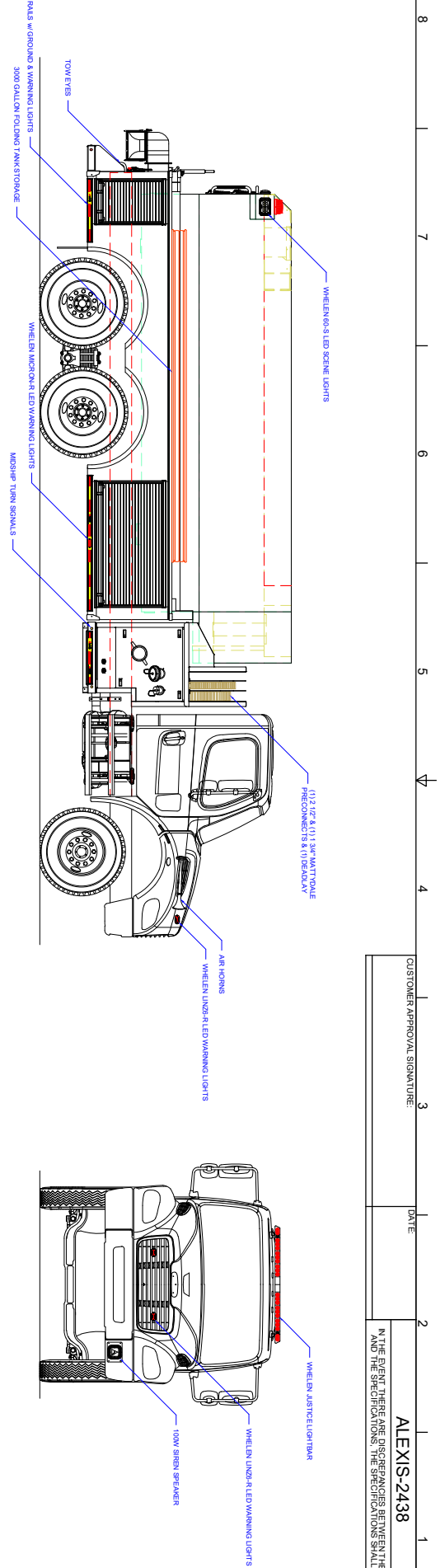


TECHNICAL SPECIFICATIONS

- Freightliner M2 106 Tandem 2-Door Chassis
- Cummins L9, 350-HP Diesel Engine
- Allison 3000 EVS Automatic Transmission
- Heavy Duty Stainless Steel Body and Sub-frame
- ROM Roll Up Doors
- 3000-Gallon Wet side Poly Tank
- One (1) 2 1/2" Fire Programs Tank fill, rear
- One (1) Newton 10" square manual swivel dump with 36" extension
- Hale DSD 150 Split Shaft 1500 GPM Pump
- Left side intermediate pump operator's panel
- Stainless Steel Manifold & Plumbing
- Three (3) 2 1/2" Discharges, two (2) left side and one (1) right side
- One (1) 3" Discharge with 5" Storz, right side
- One (1) 1 1/2" and one (1) 2 1/2" Mattydale Preconnects, behind cab
- One (1) 2 1/2" Gated Suction, left side
- Folding Tank storage, right side compartment top
- Suction hose storage, left side compartment top
- Manual battery recharge shoreline connection
- Air coupling for external air compressor
- Floor mounted console for emergency switches, cab
- SCBA Bracket Mounted in Cab
- Whelen Electronic Siren with 100-watt Whelen speaker
- Whelen LED Scene Light Package, one (1) light each side and two (2) rear
- Whelen LED Warning Light Package
- Diamond Grade Chevron pattern striping, rear
- 10' Overall height
- 31' 6" Overall length
- 236" Wheelbase
- 170.5" Cab to Axle
- 16,000 FAWR
- 40,000 RAWR
- 56,000 GVWR



To view more photos and download spec sheet, please visit us at AlexisFire.com.



DATE	CUSTOMER APPROVAL SIGNATURE
2	ALEXIS-2438

IN THE EVENT THERE ARE DISCREPANCIES BETWEEN THE DRAWING AND THE SPECIFICATIONS THE SPECIFICATIONS SHALL PREVAIL.

DATE: 1

COMPARTMENT DIMENSIONS

COMP #	DOOR OPENING SIZES
L1 & R1	58" WIDE X 27" HIGH X 28" DEEP
L2 & R2	19" WIDE X 27" HIGH X 28" DEEP

REVISION HISTORY	DATE	DRAWN	PUMP INFO:
REV	DESCRIPTION	DATE	CONTROL LOCATION: Under Tank
			PUMP DRIVER: Split Shift
			PUMP MAKE: Hale
			PUMP MODEL: DSGD
			PUMP GPM: 1500

UNLESS OTHERWISE SPECIFIED
DIMENSIONS ARE IN INCHES AND DECIMAL FRACTIONS, & TYP. METRIC 2.5 (8 mm)

ALEXIS FIRE EQUIPMENT CO.
P.O. BOX 549, ALEXIS, ILLINOIS 61412

TANKER

CLARK COUNTY FIRE DEPARTMENT
LAS VEGAS, NV

SIZE: 11/2" x 11"

CONTRACT #: 2438 SHEET 1 OF 2