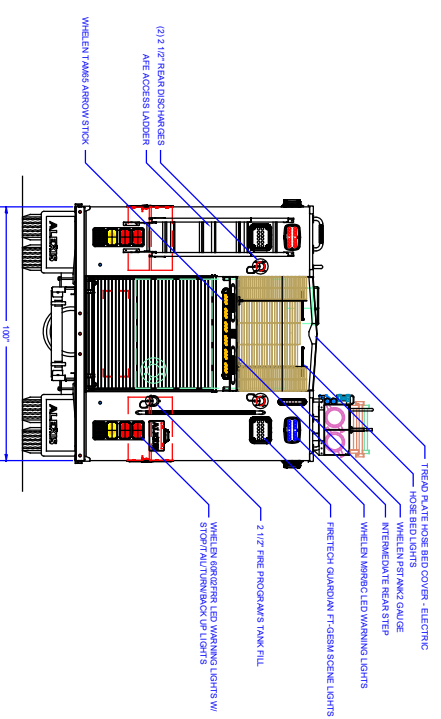
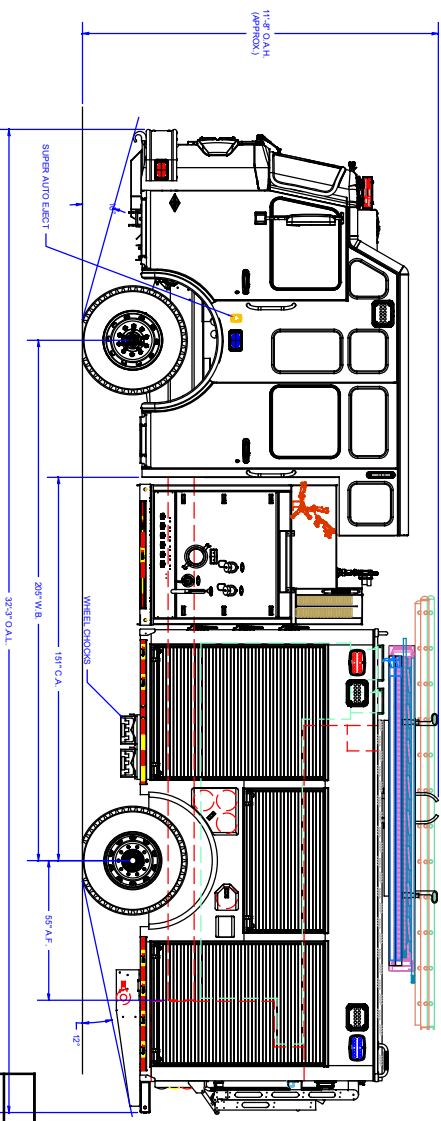
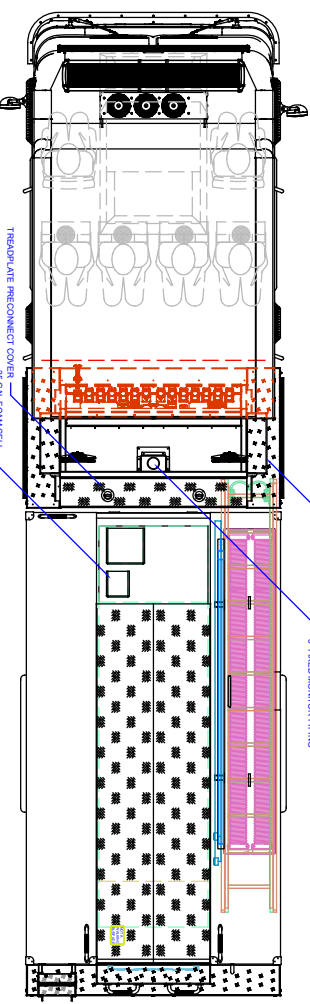
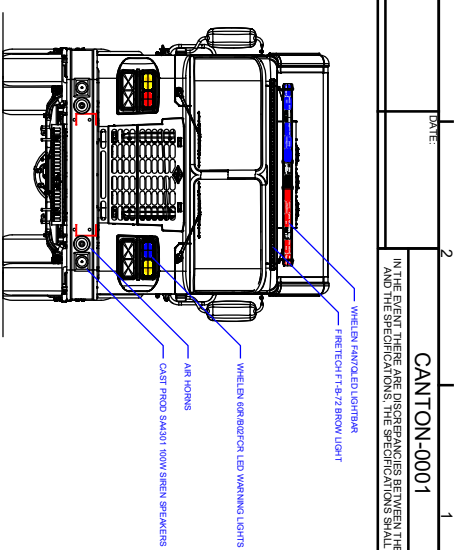
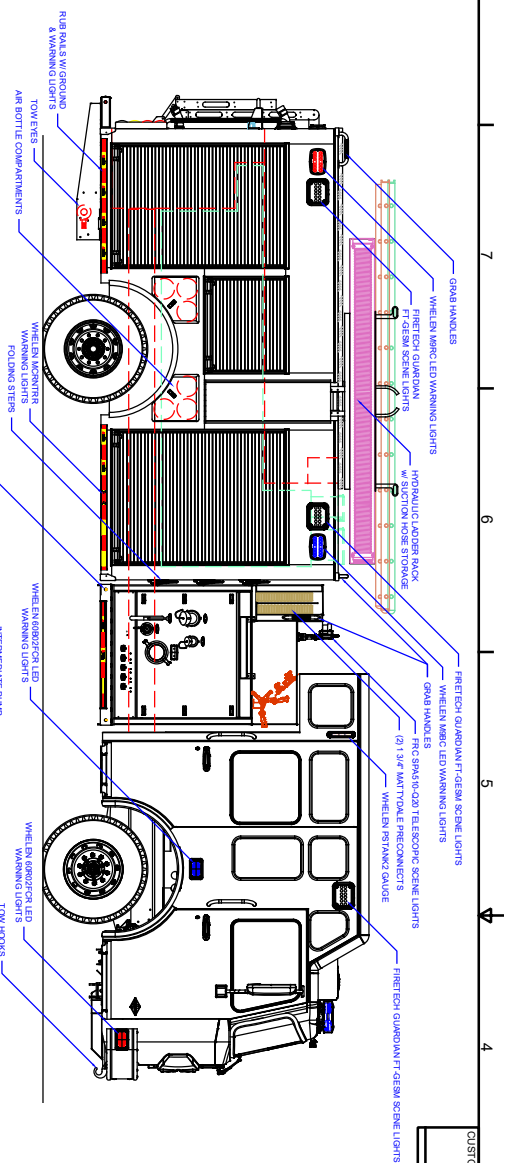


ENCLOSED TOP MOUNT PUMPER #2551**TECHNICAL SPECIFICATIONS**

Spartan Metro Star MFD Chassis with 20" Raised Roof and Pump Panel Hood
Cummins L9 380 HP Diesel Engine
Allison 3000 EVS Transmission
Heavy Duty Stainless Steel Body with Stainless Steel Subframe
Stainless Steel Enclosed Top Mount Pump Module with Stainless Steel Subframe
Waterous CXVC20 1500 GPM Pump
Trident Air Primer
Diesel Fired Heated Pump Enclosure
FRC Pump Boss Pressure Governor Monitoring System
FRC TankVision Water Tank Level Gauge with Three (3) Whelen Strip Lites
Two (2) 6" Intakes with TFT External Intake Valves, One (1) Each Side
Two (2) 2½" Gated Intakes, One (1) Each Side
One (1) 2½" Discharge, Each Side and Two (2) 2½" Discharges, Rear
One (1) 4" Discharge, Right Side
FoamPro 1600 Foam System with 25 Gallon Foam Tank
One (1) 3" Discharge Dunnage Area for Deck Gun
Two (2) 1½" Mattydale Preconnects
Three (3) Triple Wheel Well Air Bottle Compartments
ROM Roll-Up Doors
Four (4) Dual Wheel Well Air Bottle Compartments, Two (2) Each Side
Hydraulic Single Arm Ladder Rack with Suction Hose Storage. Right Side

AFE Stainless Steel Rear Access Ladder with Flip Down Step
1000 Gallon Poly Tank
One (1) 2½" FirePrograms Tank Fill, Rear Right
12 Volt Electrical System with NFPA Compliant Warning Light Package
Kussmaul AutoCharge 40 LPC Battery Charger with Kussmaul 120 Volt Air Pump
Kussmaul 20 Amp Super Auto-Eject 120V Shoreline Connection, Left Side of Cab
Whelen LED Warning Light Package with Rear Arrow Stick
Whelen 200W Siren and Two (2) CPI 100W Speakers
Eight (8) Firetech GESM Guardian LED Scene Lights, Three (3) Each Side and Two (2) Rear
Two (2) FRC Spectra LED Telescopic Lights, One (1) Each Side at the Front of the Body
FRC Inview 360 Camera System
One (1) 10' Attic Ladder, One (1) 14' Roof Ladder with Hooks, One (1) 35' 3-Section Ladder, and Two (2) 10' Lengths of 6" Suction Hose
11'-8" Overall Height
32'-3" Overall Length
205" Wheelbase
151" Cab to Axle
21,500 FAWR
31,000 RAWR
52,500 GVWR



[illegible]