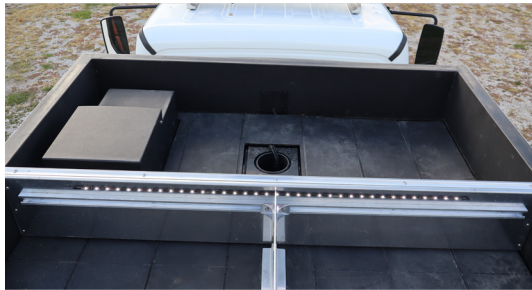


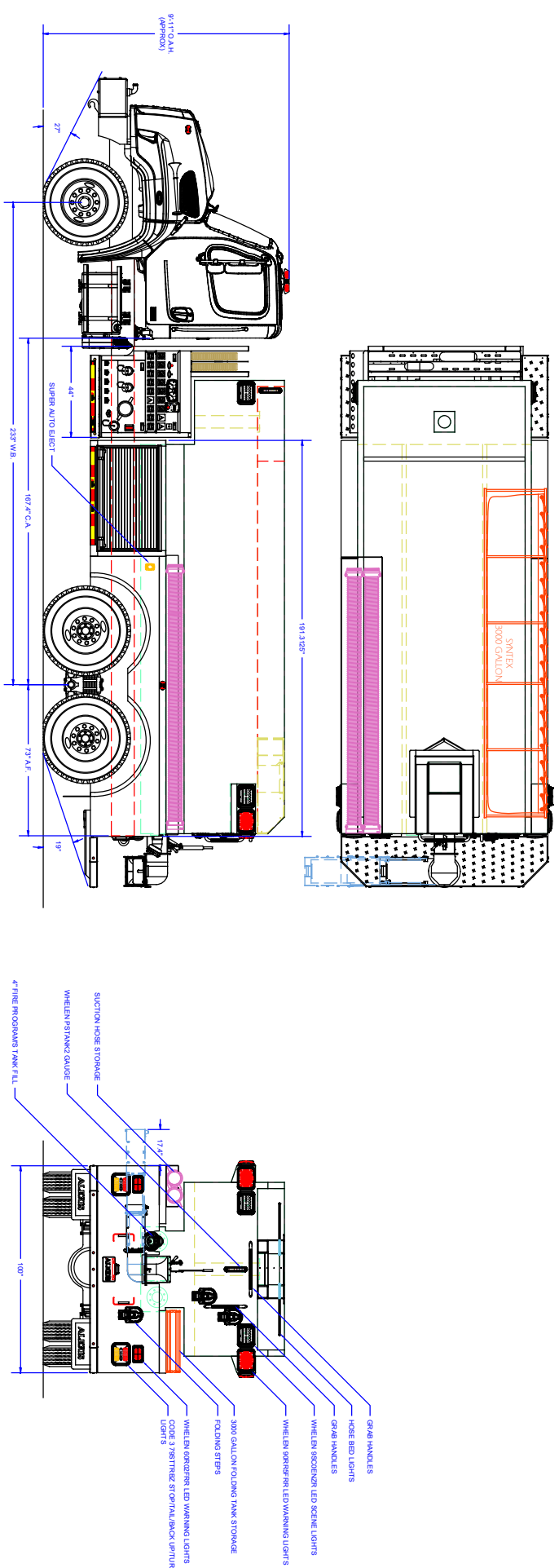
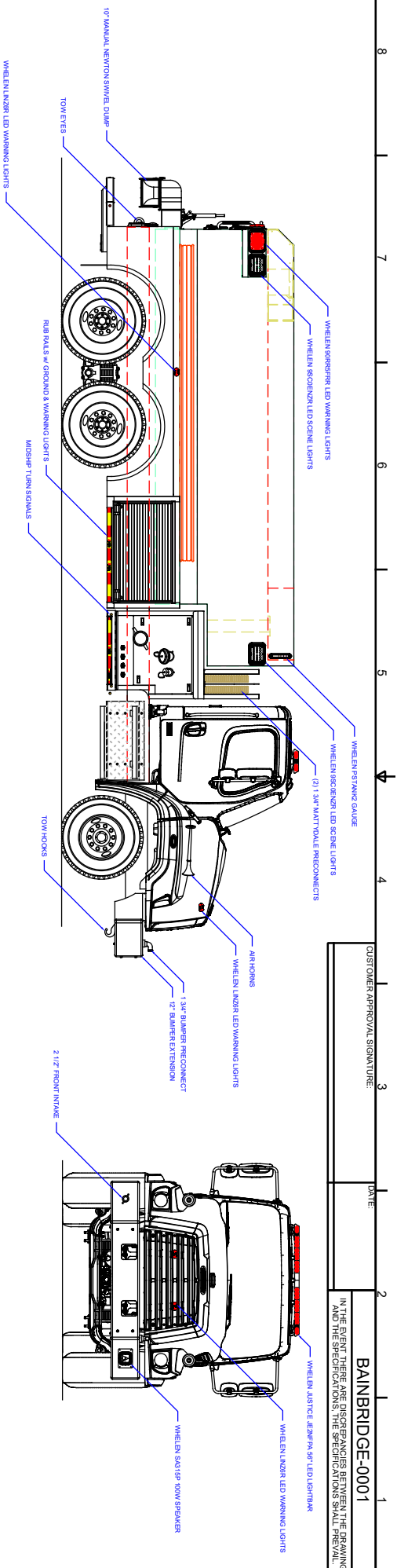
## 3000 GALLON TANKER #2593



### TECHNICAL SPECIFICATIONS

- Freightliner 114SD 2-Door Chassis
- Cummins 400 HP L9 Engine
- Allison 3000 EVS Automatic Transmission
- Heavy Duty Stainless Steel Body and Stainless Steel Subframe
- Intermediate Pump Module
- Waterous CXVPA 1250 GPM PTO Pump
- Trident Air Prime System
- FRC Pump Boss Pressure Governor
- FRC Tankvision Water Tank Level Gauge with Three (3) Whelen PSTANK2 Strip Lites
- Two (2) 6" Intakes, One (1) Each Side
- One (1) 2½" Gated Intake, Left Side
- One (1) 2½" Gated Intake, Front Bumper Right Side
- Two (2) 2½" Discharges, Left Side and One (1) 2½" Discharge, Right Side
- One (1) 3" Discharge Adapted to 5" Storz, Right Side
- Two (2) 1½" Crosslay Preconnects
- One (1) 2½" Bumper Preconnect
- ROM Roll Up Doors
- Fol-Da-Tank Storage for 3000 Gallon Fol-Da-Tank, Right Side Compartment Top
- Suction Hose Storage, Left Side Compartment Top
- 3000 Gallon Poly Wetside Tank with Wetside Hose Bed & Front Fill Tower
- One (1) 4" FirePrograms Tank Fill, Rear Left Side Adapted to 5" Storz x 2½" RL SF
- One (1) 10" Newton Stainless Steel Swivel Dump with 36" Manual Extension, Rear
- 12 Volt Electrical System with NFPA Compliant Warning Light Package
- Progressive Dynamics Battery Charger, L1 Compartment
- Kussmaul 20 Amp Super Auto-Eject 120V Shoreline Connection, Left Rear Wheel Well
- Whelen LED Warning Light Package
- Whelen 200W Siren and 100W Speaker
- Six (6) Whelen 9S LED Scene Lights, Two (2) Each Side and Two (2) Rear
- Two (2) 10' Lengths of 6" Hard Suction Hose and One (1) 3000 Gallon Fol-Da-Tank
- 9'-11" Overall Height
- 32'-11" Overall Length
- 233" Wheelbase
- 167.4" Cab to Axle
- 18,000 FAWR
- 40,000 RAWR
- 58,000 GVWR





COMPARTMENT DIMENSIONS										BAINBRIDGE FIRE DEPARTMENT BAINBRIDGE, IN									
The weight of this pump and equipment is approximately 1000 lbs. and it is not designed to be towed by a vehicle or to be used for any other purpose than firefighting.										HT-B10									
Pump Info:										Pump Info:									
Pump Location: Under Tank										Pump Location: Under Tank									
Pump Drive: PTO										Pump Drive: PTO									
Chassis:										Chassis:									
Tank Capacity: 3000										Tank Capacity: 3000									
Pump Make: Waterson										Pump Make: Waterson									
Pump Model: CXP/PA										Pump Model: CXP/PA									
Material: Stainless Steel										Material: Stainless Steel									
Pump GPM: 1250										Pump GPM: 1250									
COMP #										COMP #									
DOOR OPENING SIZES										DOOR OPENING SIZES									
L1										L1									
48" WIDE X 28" HIGH X 25" DEEP										48" WIDE X 28" HIGH X 25" DEEP									
R1										R1									
48" WIDE X 28" HIGH X 25" DEEP										48" WIDE X 28" HIGH X 25" DEEP									
MATERIAL										MATERIAL									
2										2									
CONTRACT #										CONTRACT #									
2593										2593									
SHEET 1 OF 2										SHEET 1 OF 2									

UNLESS OTHERWISE SPECIFIED  
DIMENSIONS ARE IN INCHES  
TOLERANCES ARE NOT CUMULATIVE

**ALEXIS**

**FIRE EQUIPMENT CO.**

P.O. BOX 548, ALEXIS, LUNIS 61412

DECIMAL  $\pm 0.002$  ANGULAR  $\pm 0.5^\circ$   
FRACTIONAL  $\pm 1/16$  METRIC  $\pm 0.5$  mm

**HAWK TANKER**