

750-GALLON CUSTOM TOP MOUNT PUMPER

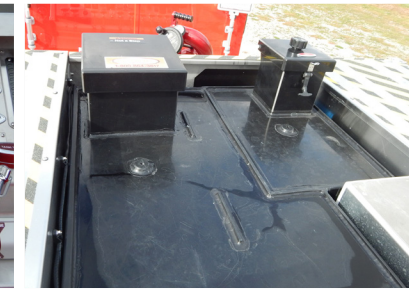
SUGAR CREEK FIRE DEPARTMENT / WEST TERRE HAUTE, INDIANA



ALEXIS



THANK YOU TO THE SUGAR CREEK FIRE DEPARTMENT FOR THE PURCHASE OF THIS UNIT.



TECHNICAL SPECIFICATIONS

- Spartan Metro Star MFD 10" Raised Roof Chassis
- Cummins L9 450 HP Diesel Engine
- Allison 3000 EVS Automatic Transmission
- Heavy Duty Aluminum or Stainless-Steel Body
- Galvanized or Stainless-Steel Sub-Frame
- Four (4) Person Cab Seating with Three (3) SCBA Seats
- ROM Roll-Up Doors
- Custom EMS Compartment with Two (2) Adjustable Shelves and Power Strip, Cab
- Hale DSD 1500 GPM Pump
- 750-Gallon Poly Tank with 30-Gallon Foam Tank
- Two (2) 6" Suctions, Left and Right Side
- Two (2) Running Board Hose Wells
- Four (4) 2 1/2" Discharges, two (2) Right and two (2) Left
- One (1) 3" Discharge with 5" Storz Adapter, Right Side
- One (1) 2 1/2" Gated Suction, Left Side
- One (1) Rear Tank Fill
- TFT Crossfire Monitor Package with Extend-a-Gun
- One (1) 2 1/2" Mattydale Preconnect
- Two (2) 1 1/2" Cartridge Lay Preconnects
- One (1) 1 1/2" Preconnect, Front Bumper Extension
- Two (2) Dual Air Bottle Compartments, one (1) Each Side
- Two (2) Dual Fire Extinguisher Compartments, one (1) Each Side
- Ladder and Suction Hose Storage, Right Rear Compartment
- Firecom Intercom System, Cab
- Federal Q2B Siren
- TecNiq Warning Light Package
- Whelen Traffic Advisor Arrow Stick
- Fire Research Scene Light Package
- Diamond Grade Chevron Striping, Rear
- Darley CAFS System
- 10' 5" Overall Height
- 33' 11" Overall Length
- 211" Wheelbase
- 157" Cab to Axle
- 20,000 FAWR
- 27,000 RAWR
- 47,000 GVWR

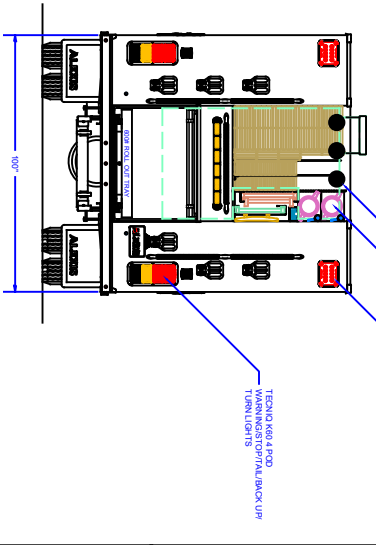
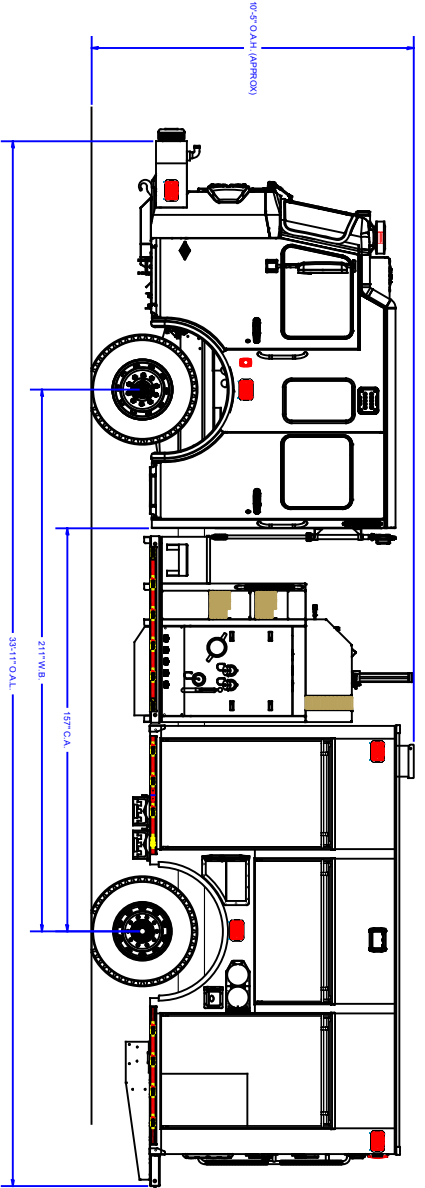
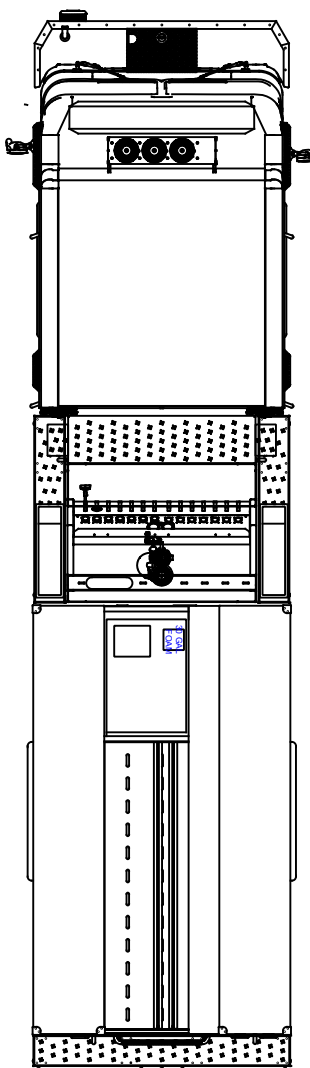
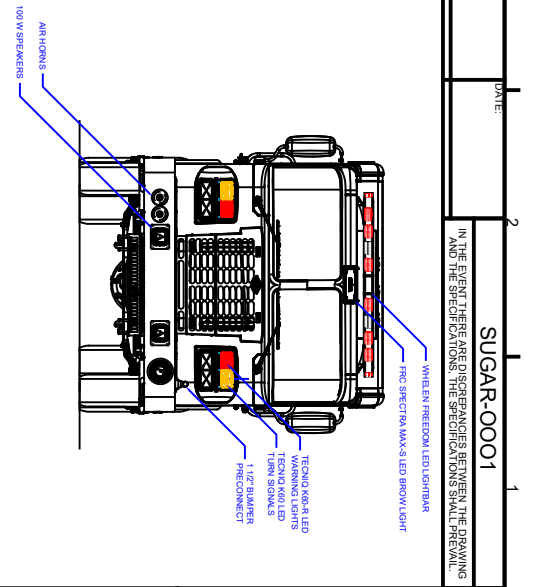
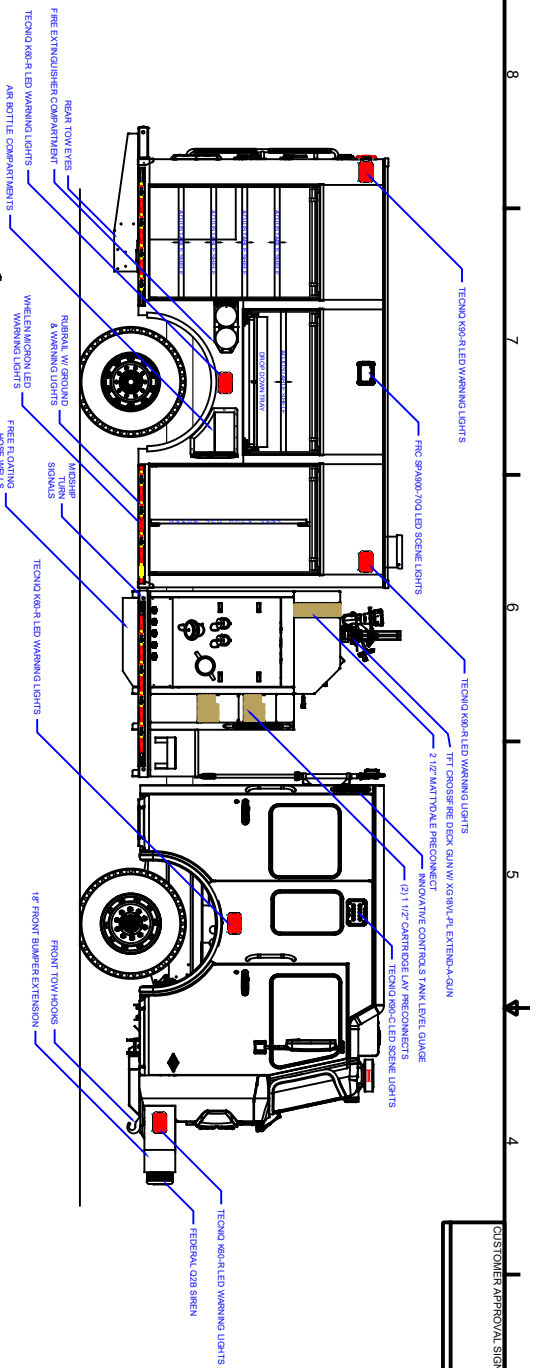


To view more photos and download spec sheet, please visit us at AlexisFire.com.

CUSTOMER APPROVAL SIGNATURE: _____ DATE: _____

SUGAR-0001

IN THE EVENT THERE ARE DISCREPANCIES BETWEEN THE DRAWING AND THE SPECIFICATIONS, THE SPECIFICATIONS SHALL PREVAIL.



COMPARTMENT DIMENSIONS

COMP #	DOOR OPENING SIZES
L1 & R1	44" WIDE X 62" HIGH X 25" DEEP
L2 & R2	54" WIDE X 26" HIGH X 25" DEEP
L3 & R3	42" WIDE X 62" HIGH X 25" DEEP
REAR	43" WIDE X 28" HIGH X 25" DEEP

Item	Quantity	Manufacturer
Pump Unit	1	Primor
Control Location	1	For
Pump Drive	1	Starbush
Chassis	1	Starbush BOC
Tank Capacity	750	
Pump Model	PSM	
Pump GPM	1500	

REV	DESCRIPTION	DATE	BY
REV 1	REVISION HISTORY	11/27/18	2008
REV 2	DESCRIPTION UPDATE	11/27/18	2008

UNLESS OTHERWISE SPECIFIED, DIMENSIONS ARE IN INCHES. DECIMALS ARE NOT COMBINATION FRACTIONS. SEE NOTE 16. METRIC EQUIVALENTS ARE APPROXIMATE.

ALEXIS FINE EQUIPMENT CO.
 P.O. BOX 518, ALEXIS, ILLINOIS 61412

SUGAR CREEK PUMPER
 WEST TERRA HAUTE, IN
 P-X48

DATE: 3/28/2019
 DRAWN BY: J. HENNING
 SIZE: 1/2" = 1"
 SHEET: 1 OF 2