

MINI PUMPER

SOUTHWICK FIRE DEPARTMENT / SOUTHWICK, MA



ALEXIS



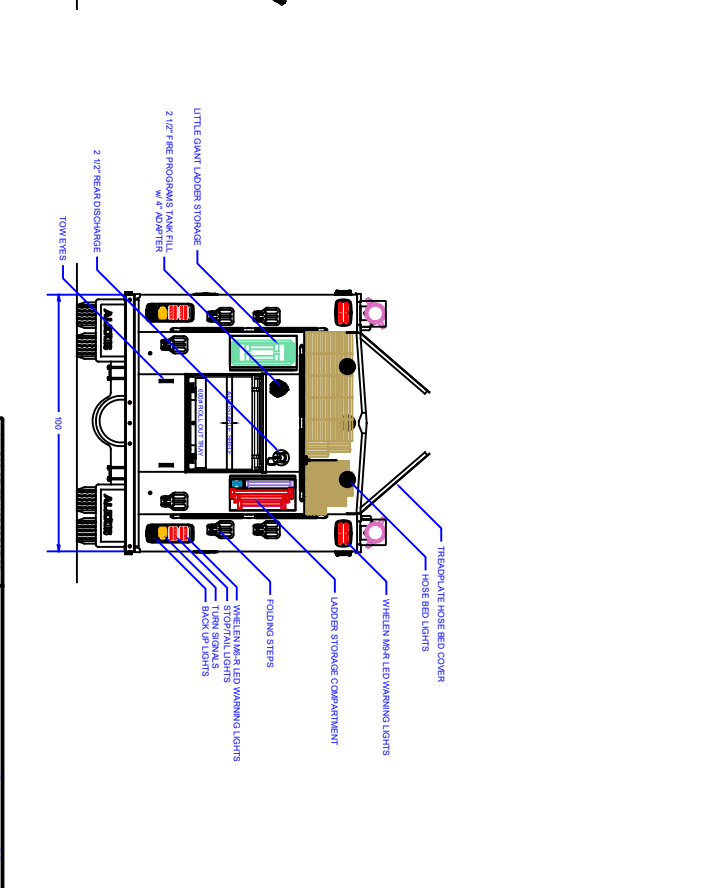
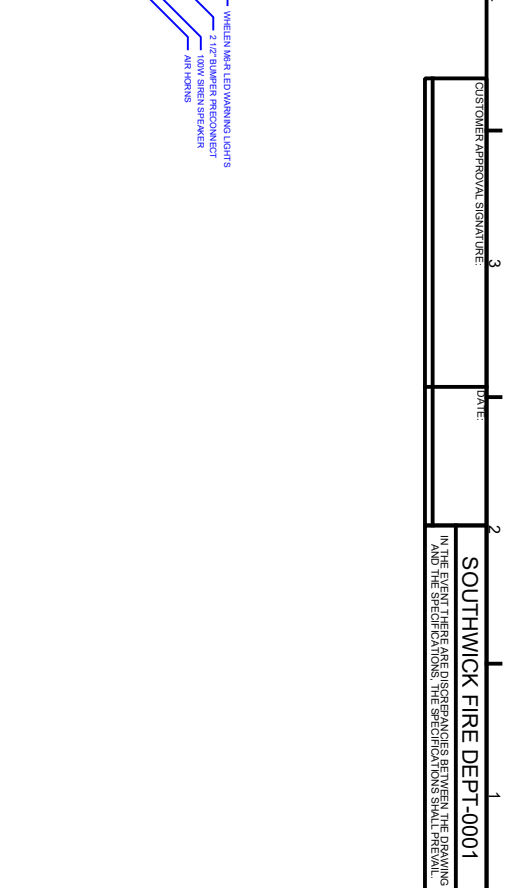
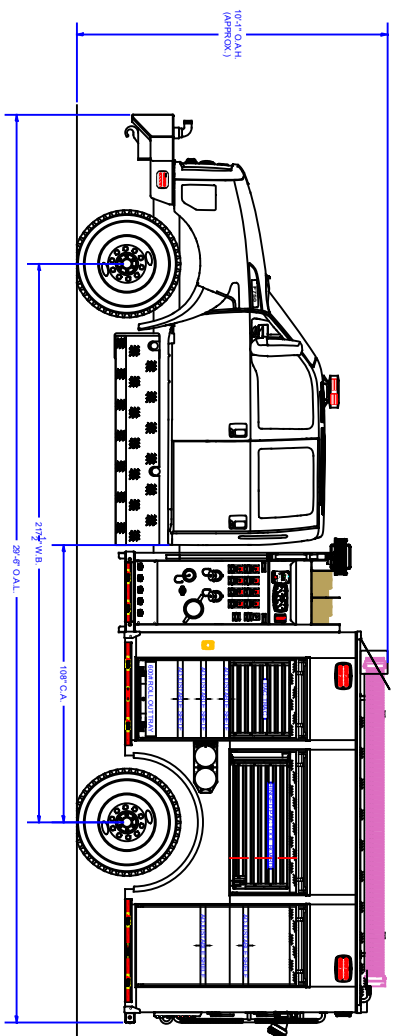
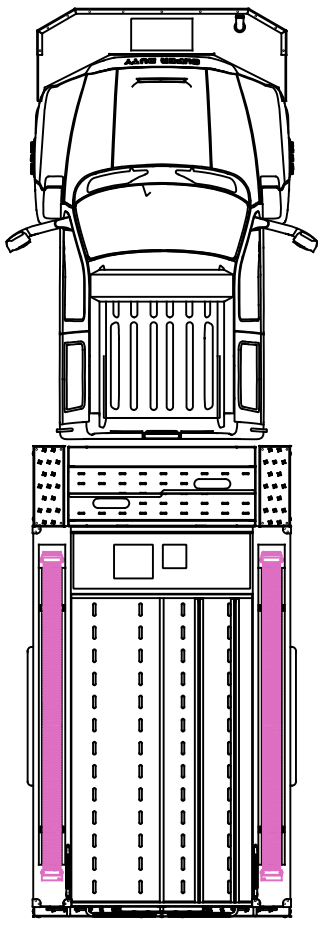
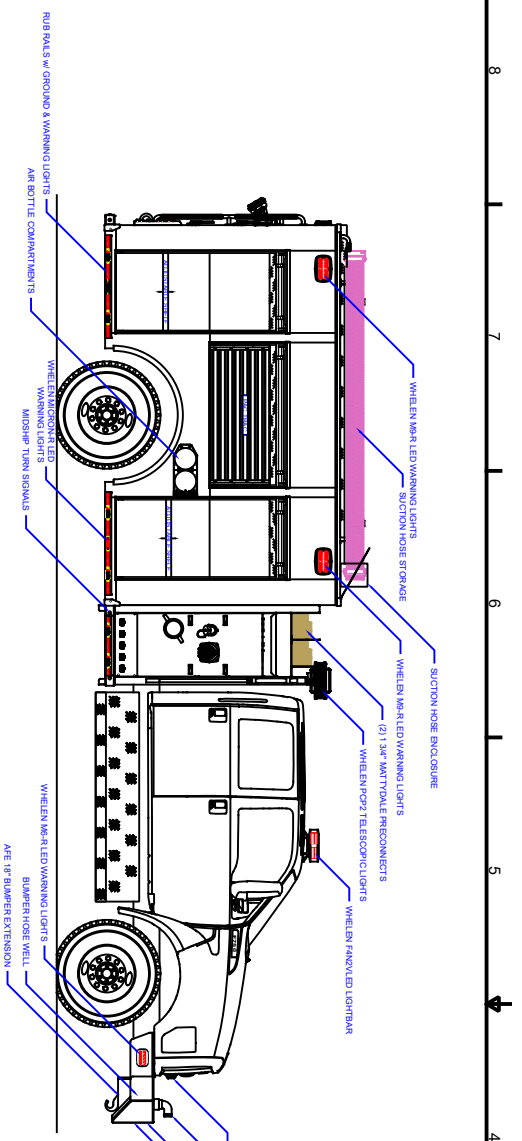
THANK YOU TO THE SOUTHWICK FIRE DEPARTMENT FOR THE PURCHASE OF THIS UNIT.

TECHNICAL SPECIFICATIONS

- Ford F750 4-Door Chassis with 18" Front Bumper Extension
- 6.7L Power Stroke V8 Turbo Diesel
- Ford TorqShift 6-speed Automatic
- Heavy Duty Stainless Steel Body and Sub-Frame
- Four (4) Cab Seats with Three (3) SCBA Seats
- Custom EMS Compartment, Cab
- 600-Gallon Poly Tank
- Hale DSD125, 1250 GPM Pump
- Four (4) 2½" Discharges, Two (2) Left, One (1) Right, One (1) Rear
- One (1) 4" Discharge, Right Side
- Two (2) 1½" Mattydale Preconnects
- One (1) 2½" Preconnect, Front Bumper
- One (1) 2½" Gated Suction, Left Side
- Feecon Foam Proportioner with 10 Gallon Tank
- One (1) Recessed Hose Well, Front Bumper
- Two (2) Dual Wheel Well Air Bottle Compartments
- Aluminum Treadplate Hosebed and Dunnage Cover
- Two (2) PAC TRAC Tool Boards, Left and Right Compartment Over Wheel
- Progressive Dynamics Battery Charger with Viair Compressor
- Blue Sea Auto Eject
- Floor Mounted Console for Emergency Switches, Cab
- Suction Hose Storage, One (1) Each Side Top of Body
- Ladder Storage, Rear
- Audiovox Backup Camera System w/7" Color Monitor
- Whelen Siren with 100-Watt Speaker
- Whelen LED Warning and Scene Light Packages
- Diamond Grade Chevron Pattern Striping, Rear
- 10' 4" Overall Height
- 29' 6" Overall Length
- 218" Wheelbase
- 108" Cab to Axle
- 10,000 FAWR
- 21,000 RAWR
- 31,000 GVWR



To view more photos and download spec sheet, please visit us at AlexisFire.com.



CUSTOMER APPROVAL SIGNATURE: _____ DATE: _____

SOUTHWICK FIRE DEPT-0001

IN THE EVENT THERE ARE DISCREPANCIES BETWEEN THE DRAWING AND THE SPECIFICATIONS, THE SPECIFICATIONS SHALL PREVAIL.

COMPARTMENT DIMENSIONS

COMP #	DOOR OPENING SIZES
L1 & R1	30" WIDE X 62" HIGH X 28" DEEP
L2 & R2	54" WIDE X 25" HIGH X 28 1/2" DEEP
L3 & R3	30" WIDE X 62" HIGH X 27 1/2" DEEP
REAR	30" WIDE X 29" HIGH X 40" DEEP

UNLESS OTHERWISE SPECIFIED, DIMENSIONS ARE IN INCHES. TOLERANCES ARE NOT COMPLICATIVE.

ALEXIS FIRE EQUIPMENT CO.
 P.O. BOX 518 ALEXIS ILLINOIS 61412

SOUTHWICK FIRE DEPT
 SOUTHWICK, MA

DATE OF DRAWING: 1/16/19
 DRAWN BY: M/TINKHAM
 CHECKED BY: _____
 SCALE: D 1/2" = 1'
 SHEET: 1 OF 2

Pump Info:

Control Location:	Side
Pump Drive:	Starb Shaft
Pump Make:	Hale
Pump Model:	DSO
Pump GPM:	1250

Apparatus Type: Mid Pumper

Chassis:	Tran Capacity 800
Material:	Stainless Steel

REVISIONS

REV	DESCRIPTION	DATE	BY
01	CHANGE CHASSIS	2/20/19	2392