

# SIDE CONTROL PUMPER/TANKER

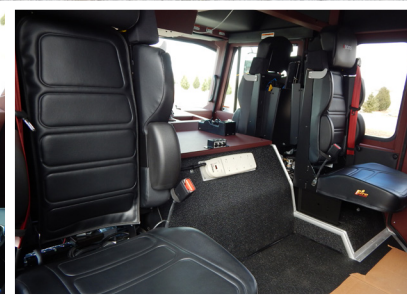
TAYLOR TOWNSHIP FIRE DEPARTMENT / KOKOMO, INDIANA



# ALEXIS

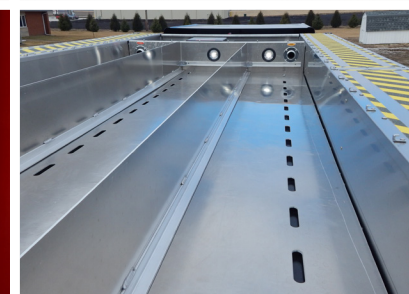


THANK YOU TO THE TAYLOR TOWNSHIP FIRE DEPARTMENT FOR THE PURCHASE OF THIS UNIT.



## TECHNICAL SPECIFICATIONS

- Spartan Metro Star MFD 10" Raised Roof Tandem Chassis
- Cummins L9, 400-HP Diesel Engine
- Allison 3000 EVS Automatic Transmission
- Heavy Duty Stainless Steel Body and Sub-Frame
- ROM Roll Up Compartment Doors
- Custom EMS Compartment with ROM Roll Up Door, Chassis Cab
- Severe Duty Front Bumper with One (1) 1½" Preconnect
- 2200 Gallon Poly Tank
- One (1) Newton 10" Square Electric Swivel Dump with 18" Extension, Rear
- Hale QMAX, 1500 GPM Pump
- Four (4) 2½" Discharges, Two (2) on Each Side
- One (1) 4" Discharge, Right Side
- One (1) 2½" Gated Suction, Left Side
- One (1) 5" Suction, Front
- Two (2) 1½" Mattydale Preconnects, Across Top of Body
- One (2) 2½" Preconnect, Front of Hose Bed
- Two (2) Free Floating Hose Wells in Running Boards, One (1) Each Side
- Two (2) Dual Bottle Air Bottle Compartments, One (1) on Each Side
- Two (2) Triple Bottle Air Bottle Compartments, One (1) on Each Side
- Folding Tank Storage, Rear Middle Compartment
- Hard Suction Storage, Rear Upper Compartments
- Ladder Storage, Rear Middle Compartment
- TFT Crossfire Deck Gun
- Two (2) Air Horns, Front Bumper
- Federal Q2B Siren, Front Bumper
- Whelen LED Warning Lights Package
- Fire Research Scene Lights Package
- 9' 10" Overall height
- 35' 10" Overall length
- 216" Wheelbase
- 162" Cab to Axle
- 21,500 FAWR
- 44,000 RAWR
- 65,500 GVWR



To view more photos and download spec sheet, please visit us at [AlexisFire.com](http://AlexisFire.com).

