

CUSTOM 1800-GALLON TANKER

FOX RIVER & COUNTRYSIDE FIRE RESCUE DISTRICT
ST. CHARLES, ILLINOIS



ALEXIS



THANK YOU TO THE FOX RIVER & COUNTRYSIDE FIRE RESCUE DISTRICT FOR THE PURCHASE OF THIS UNIT.



TECHNICAL SPECIFICATIONS

- HME 1871w MFD Chassis
- Cummins ISL9, 450-HP Diesel Engine
- Allison 3000 EVS Automatic Transmission
- Heavy Duty Stainless steel Body and Sub-Frame
- ROM Roll Up Doors
- Six (6) person cab seating with five (5) SCBA seats
- Custom EMS compartment, chassis cab between rear-facing seats
- 18" Front bumper extension
- 1800-Gallon Poly Tank
- One (1) Newton 10" square electric control swivel dump with 36" extension
- One (1) 4" Fireman's Friend Tank Fill, rear
- Waterous CX 1500-GPM Pump
- Left side Intermediate pump panel
- Four (4) 2 1/2" Discharges, two (2) left side, one (1) right side and one (1) rear
- Two (2) 3" Discharges, one (1) right side and one (1) over pump for deck gun
- One (1) 2 1/2" Gated Suction, left side
- Three (3) Mattydale preconnects, two (2) 1 1/2" and one (1) 2 1/2" above pump
- Slide in Folding Tank storage for 2100-gallon tank with rear access
- Three (3) Dual Bottle Air Bottle Compartments, one (1) left and two (2) right side
- Ziamatic Electrically controlled Ladder Rack, right side compartment top
- Pro Mariner on-board battery charger
- One (1) Akron Apollo monitor with stream shaper, stacked tips and mounts
- Whelen Electronic Siren with two (2) Cast Products speakers
- Two (2) Air Horns, front bumper
- Whelen and Fire Tech LED Scene Light Packages
- Whelen LED Warning Light Package
- Diamond Grade Chevron pattern striping, rear
- 9' 9" Overall height
- 31' 10" Overall length
- 200" Wheelbase
- 140" Cab to Axle
- 21,500 FAWR
- 33,000 RAWR
- 54,500 GVWR

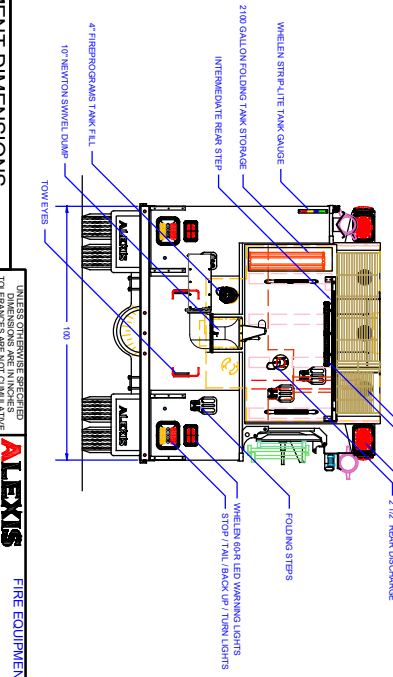
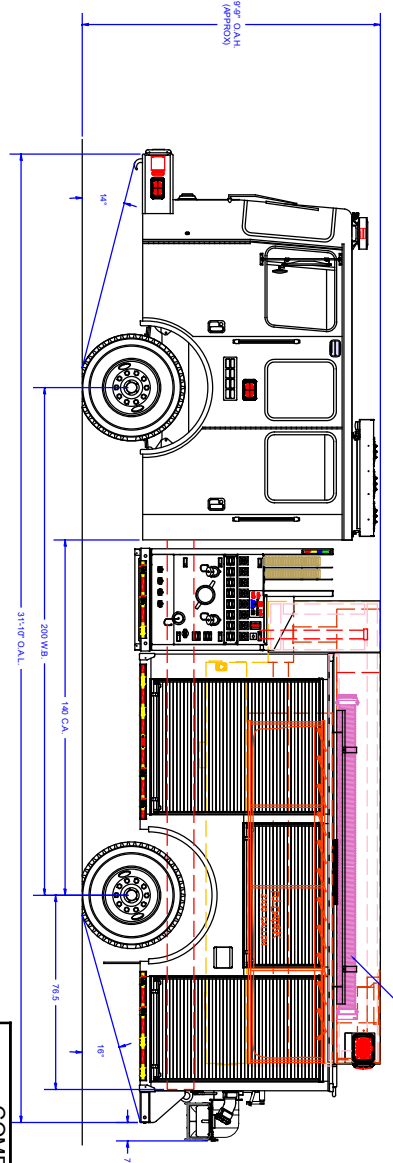
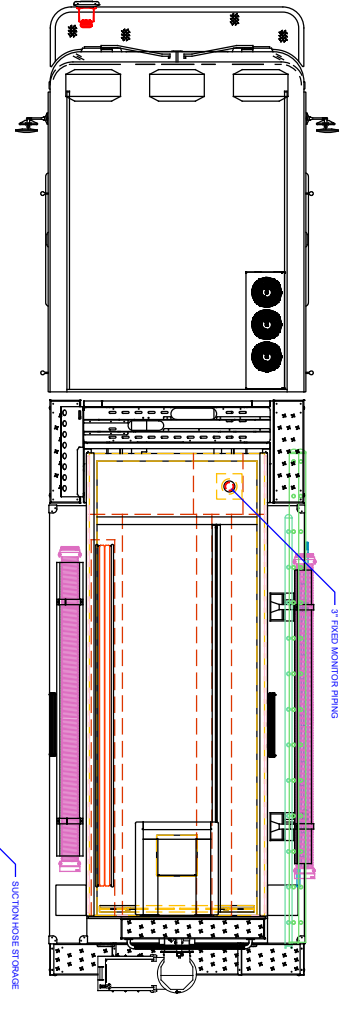
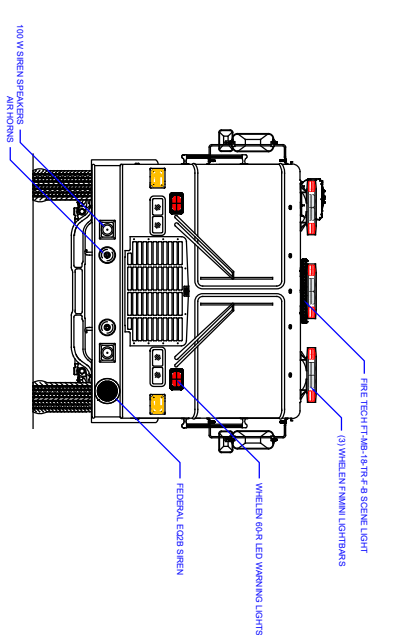
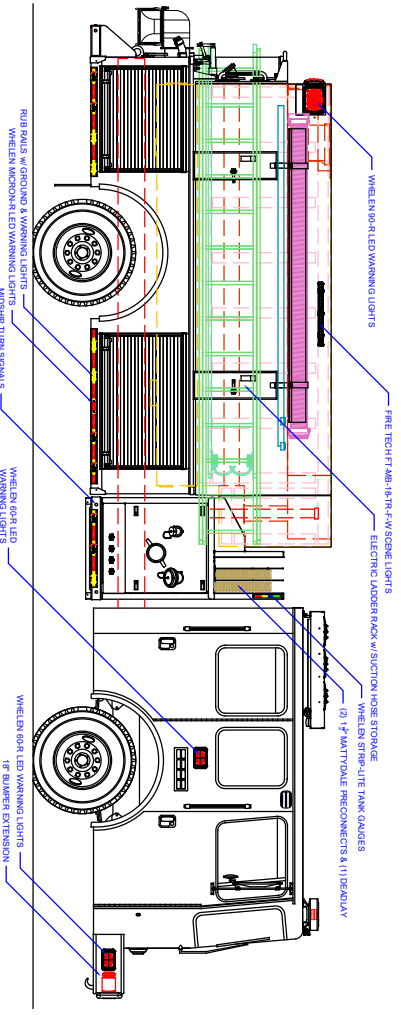


To view more photos and download spec sheet, please visit us at AlexisFire.com.

CUSTOMER APPROVAL SIGNATURE: _____ DATE: _____

AFE-2338

IN THE EVENT THERE ARE DISCREPANCIES BETWEEN THE DRAWING AND THE SPECIFICATIONS THE SPECIFICATIONS SHALL PREVAIL.



COMPARTMENT DIMENSIONS

COMP #	DOOR OPENING SIZES
L1	51" WIDE X 62" HIGH X 122" DEEP
L2	54" WIDE X 25" HIGH X 12" DEEP
L3	39" WIDE X 62" HIGH X 122" DEEP
R1	51" WIDE X 27" HIGH X 28" DEEP
R2	39" WIDE X 27" HIGH X 28" DEEP

ALEXIS FIRE EQUIPMENT CO.
 P.O. BOX 549, ALEXIS, ILLINOIS 61412

1800 GAL TANKER
 FOX RIVER & COUNTRYSIDE FIRE RESC
 ST CHARLES, ILLINOIS

DATE: 6/19/18
 SIZE: 1800 GAL
 DRAWN BY: T-106
 CHECKED BY: D-11
 CONTRACT #: 2338
 SHEET: 1 OF 2

ITEM #	DESCRIPTION	DATE	QTY	MATERIAL
1	RESERVOIR			
2	PUMP DRIVE			
3	PUMP MODEL			
4	PUMP CAPACITY			

ITEM #	DESCRIPTION	DATE	QTY	MATERIAL
1	WHEEL STRIP-LITE TANK GAUGE			
2	WHEEL 60A LED WARNING LIGHT			
3	WHEEL 60A LED WARNING LIGHT			
4	WHEEL 60A LED WARNING LIGHT			
5	WHEEL 60A LED WARNING LIGHT			
6	WHEEL 60A LED WARNING LIGHT			
7	WHEEL 60A LED WARNING LIGHT			
8	WHEEL 60A LED WARNING LIGHT			
9	WHEEL 60A LED WARNING LIGHT			
10	WHEEL 60A LED WARNING LIGHT			
11	WHEEL 60A LED WARNING LIGHT			
12	WHEEL 60A LED WARNING LIGHT			
13	WHEEL 60A LED WARNING LIGHT			
14	WHEEL 60A LED WARNING LIGHT			
15	WHEEL 60A LED WARNING LIGHT			
16	WHEEL 60A LED WARNING LIGHT			
17	WHEEL 60A LED WARNING LIGHT			
18	WHEEL 60A LED WARNING LIGHT			
19	WHEEL 60A LED WARNING LIGHT			
20	WHEEL 60A LED WARNING LIGHT			
21	WHEEL 60A LED WARNING LIGHT			
22	WHEEL 60A LED WARNING LIGHT			
23	WHEEL 60A LED WARNING LIGHT			
24	WHEEL 60A LED WARNING LIGHT			
25	WHEEL 60A LED WARNING LIGHT			
26	WHEEL 60A LED WARNING LIGHT			
27	WHEEL 60A LED WARNING LIGHT			
28	WHEEL 60A LED WARNING LIGHT			
29	WHEEL 60A LED WARNING LIGHT			
30	WHEEL 60A LED WARNING LIGHT			
31	WHEEL 60A LED WARNING LIGHT			
32	WHEEL 60A LED WARNING LIGHT			
33	WHEEL 60A LED WARNING LIGHT			
34	WHEEL 60A LED WARNING LIGHT			
35	WHEEL 60A LED WARNING LIGHT			
36	WHEEL 60A LED WARNING LIGHT			
37	WHEEL 60A LED WARNING LIGHT			
38	WHEEL 60A LED WARNING LIGHT			
39	WHEEL 60A LED WARNING LIGHT			
40	WHEEL 60A LED WARNING LIGHT			
41	WHEEL 60A LED WARNING LIGHT			
42	WHEEL 60A LED WARNING LIGHT			
43	WHEEL 60A LED WARNING LIGHT			
44	WHEEL 60A LED WARNING LIGHT			
45	WHEEL 60A LED WARNING LIGHT			
46	WHEEL 60A LED WARNING LIGHT			
47	WHEEL 60A LED WARNING LIGHT			
48	WHEEL 60A LED WARNING LIGHT			
49	WHEEL 60A LED WARNING LIGHT			
50	WHEEL 60A LED WARNING LIGHT			
51	WHEEL 60A LED WARNING LIGHT			
52	WHEEL 60A LED WARNING LIGHT			
53	WHEEL 60A LED WARNING LIGHT			
54	WHEEL 60A LED WARNING LIGHT			
55	WHEEL 60A LED WARNING LIGHT			
56	WHEEL 60A LED WARNING LIGHT			
57	WHEEL 60A LED WARNING LIGHT			
58	WHEEL 60A LED WARNING LIGHT			
59	WHEEL 60A LED WARNING LIGHT			
60	WHEEL 60A LED WARNING LIGHT			
61	WHEEL 60A LED WARNING LIGHT			
62	WHEEL 60A LED WARNING LIGHT			
63	WHEEL 60A LED WARNING LIGHT			
64	WHEEL 60A LED WARNING LIGHT			
65	WHEEL 60A LED WARNING LIGHT			
66	WHEEL 60A LED WARNING LIGHT			
67	WHEEL 60A LED WARNING LIGHT			
68	WHEEL 60A LED WARNING LIGHT			
69	WHEEL 60A LED WARNING LIGHT			
70	WHEEL 60A LED WARNING LIGHT			
71	WHEEL 60A LED WARNING LIGHT			
72	WHEEL 60A LED WARNING LIGHT			
73	WHEEL 60A LED WARNING LIGHT			
74	WHEEL 60A LED WARNING LIGHT			
75	WHEEL 60A LED WARNING LIGHT			
76	WHEEL 60A LED WARNING LIGHT			
77	WHEEL 60A LED WARNING LIGHT			
78	WHEEL 60A LED WARNING LIGHT			
79	WHEEL 60A LED WARNING LIGHT			
80	WHEEL 60A LED WARNING LIGHT			