

# ENCLOSED TOP MOUNT PUMPER/TANKER

AMANA BENEFITED FIRE DISTRICT / AMANA, IOWA



# ALEXIS



THANK YOU TO THE AMANA BENEFITED FIRE DISTRICT FOR THE PURCHASE OF THIS UNIT.

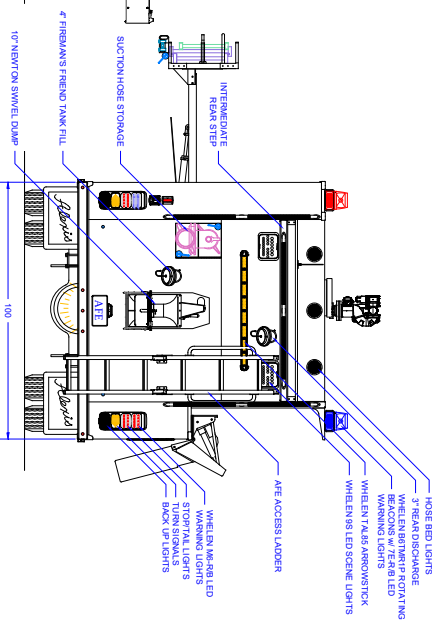
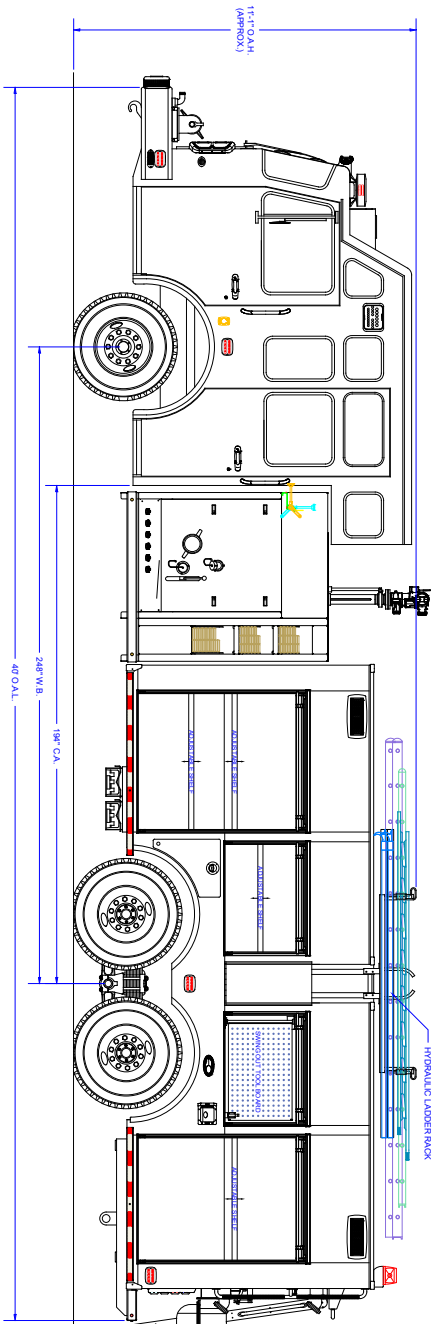
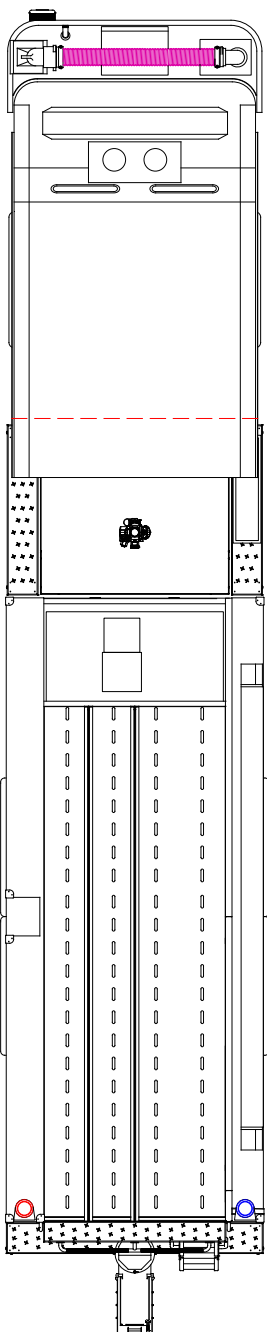
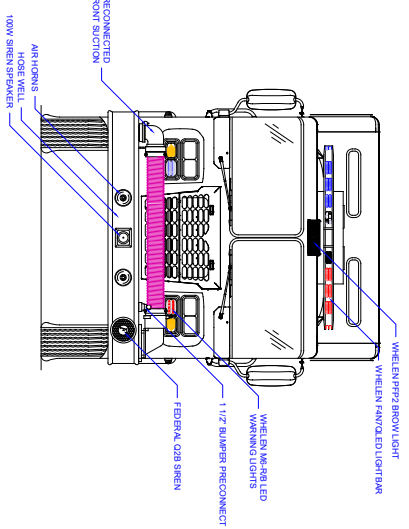
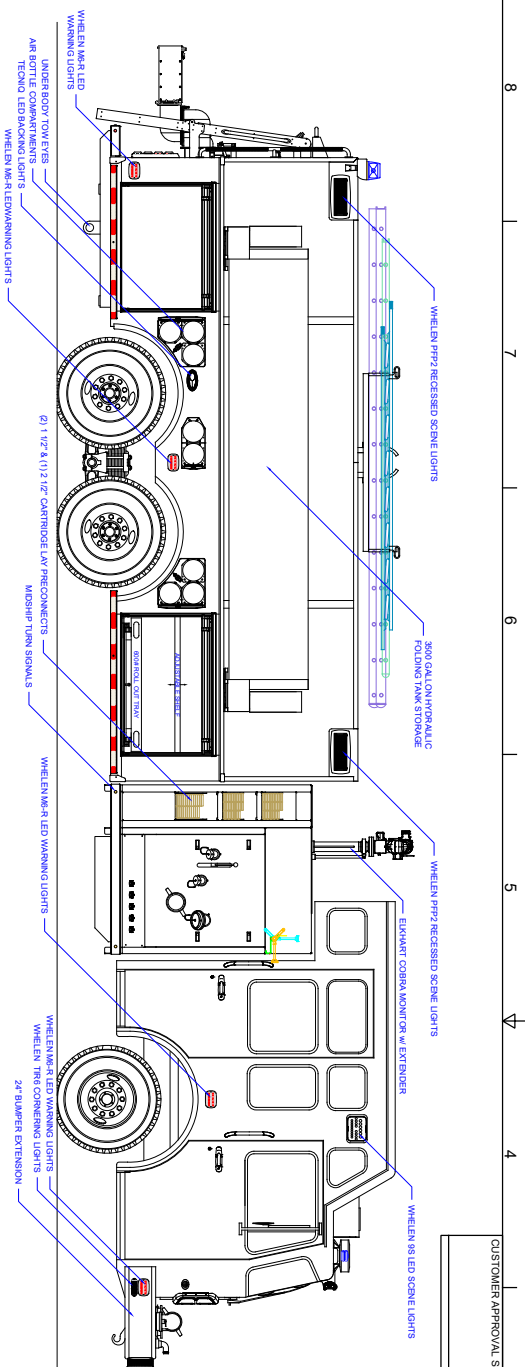


## TECHNICAL SPECIFICATIONS

- Spartan Metro Star MFD 24" raised roof Tandem Chassis
- Cummins L9, 450-HP Diesel Engine
- Allison 3000 EVS Automatic Transmission
- Heavy Duty Stainless-steel Body and Sub-Frame
- ROM Roll Up Compartment Doors
- 24" Front bumper extension with 5" suction and 1 1/2" Preconnect
- Five (5) Person Cab seating with four (4) SCBA seats
- 3000-Gallon Poly Tank
- One (1) 2 1/2" Tank fill, right side and One (1) 4" Tank fill, rear
- One (1) Newton 10" square electric swivel dump with 36" manual extension
- Hale QMAX150, 1500-GPM Pump with enclosed top operator's controls
- Two (2) 2 1/2" Discharges, one (1) each side
- Three (3) 3" Discharges, one (1) right side, one (1) rear and one (1) over pump
- One (1) 2 1/2" and two (2) 1 1/2" Cartridge Lay Preconnects, front of body
- One (1) 2 1/2" Gated Suction, left side
- Free floating hosewell, right side pump module running board
- One (1) Dual bottle and two (2) triple bottle Air bottle compartments, wheel well
- One (1) Wheel well Oil dry hopper, left side
- Ziamatic hydraulic hinged folding tank rack for 3500-gallon tank, right side
- One (1) Suction hose storage compartment, left side with rear access
- Zico Heavy Duty Hydraulic Ladder Rack, left side
- Stainless-steel Top access ladder, rear mounted
- Whelen Electronic Siren with Cast Products 100-watt speaker
- Federal Q2B mechanical Siren, front bumper recess mount
- Two (2) Air horns, front bumper
- Kussmaul 1200 on-board battery charger/Air compressor
- Kussmaul Super Auto Eject 120-volt shoreline connection
- Audiovox back-up Camera system with 7" color monitor and side camera
- Whelen LED Warning and Scene Light Packages
- Diamond Grade Chevron pattern striping, rear
- 11'1" Overall height
- 40' Overall length
- 248" Wheelbase
- 194" Cab to Axle
- 21,500 FAWR
- 48,000 RAWR
- 69,500 GVWR



To view more photos and download spec sheet, please visit us at [AlexisFire.com](http://AlexisFire.com).



## COMPARTMENT DIMENSIONS

UNLESS OTHERWISE SPECIFIED ALL MEASUREMENTS ARE IN INCHES TOLERANCES ARE NOT COMULATIVE	 <b>Alexis</b> <b>FIRE EQUIPMENT CO.</b>
DECIMAL ± 0.002 ANGULAR ± 0.5 TOLERANCE ± 0.16 METRIC ± 0.1mm	P.O. BOX 549, ALEXIS, ILLINOIS 61412
ENCLTM. PUMPER/TANKER	

		AMANA BENEFITTED FIRE DIST	
		AMANA, IA	
		The copyright of the drawing and design is the property of Amana Fire Equipment Co. and the right of reproduction there is reserved and is hereby acknowledged by the undersigned to Amana Fire Equipment Co.	
		SIZE	ROCK
		D	1/2" x 1"
		CONTRACT #	2345
		SHEET	1 OF 2
		P-W05	
		M.I.N.K.H.A.M	
		7/12/17	
		M.I.N.K.H.A.M	
		47" WIDE X 31" HIGH X 28" DEEP	
		R1	
		47" WIDE X 31" HIGH X 12" DEEP	
		L3	
		47" WIDE X 27" HIGH X 12" DEEP	
		L4	
		Chassis: Spartan 54 - BOC	
		Tank Capacity: 3000	
		U3	
		Apparatus Type: Pumper/Tanker	
		L1	
		56" WIDE X 61" HIGH X 12'26" DEEP	
		L2	
		Control Location: Top	
		L1	
		Pump Drive: Split Shaft	
		L2	
		Pump Model: Hale	
		L3	
		Pump GPM: 1500	
		R2	
		Material: Stainless Steel	
		R2	
		DATE	
		7/26/17	
		DRAWN	
		T.M.	
		SHEET	
		1 OF 2	
		P-W05	
		M.I.N.K.H.A.M	
		7/12/17	
		M.I.N.K.H.A.M	
		47" WIDE X 31" HIGH X 28" DEEP	
		R1	
		47" WIDE X 31" HIGH X 12" DEEP	
		L3	
		47" WIDE X 27" HIGH X 12" DEEP	
		L4	
		Chassis: Spartan 54 - BOC	
		Tank Capacity: 3000	
		U3	
		Apparatus Type: Pumper/Tanker	
		L1	
		56" WIDE X 61" HIGH X 12'26" DEEP	
		L2	
		Control Location: Top	
		L1	
		Pump Drive: Split Shaft	
		L2	
		Pump Model: Hale	
		L3	
		Pump GPM: 1500	
		R2	
		Material: Stainless Steel	
		R2	
		DATE	
		7/26/17	
		DRAWN	
		T.M.	
		SHEET	
		1 OF 2	
		P-W05	
		M.I.N.K.H.A.M	
		7/12/17	
		M.I.N.K.H.A.M	
		47" WIDE X 31" HIGH X 28" DEEP	
		R1	
		47" WIDE X 31" HIGH X 12" DEEP	
		L3	
		47" WIDE X 27" HIGH X 12" DEEP	
		L4	
		Chassis: Spartan 54 - BOC	
		Tank Capacity: 3000	
		U3	
		Apparatus Type: Pumper/Tanker	
		L1	
		56" WIDE X 61" HIGH X 12'26" DEEP	
		L2	
		Control Location: Top	
		L1	
		Pump Drive: Split Shaft	
		L2	
		Pump Model: Hale	
		L3	
		Pump GPM: 1500	
		R2	
		Material: Stainless Steel	
		R2	
		DATE	
		7/26/17	
		DRAWN	
		T.M.	
		SHEET	
		1 OF 2	
		P-W05	
		M.I.N.K.H.A.M	
		7/12/17	
		M.I.N.K.H.A.M	
		47" WIDE X 31" HIGH X 28" DEEP	
		R1	
		47" WIDE X 31" HIGH X 12" DEEP	
		L3	
		47" WIDE X 27" HIGH X 12" DEEP	
		L4	
		Chassis: Spartan 54 - BOC	
		Tank Capacity: 3000	
		U3	
		Apparatus Type: Pumper/Tanker	
		L1	
		56" WIDE X 61" HIGH X 12'26" DEEP	
		L2	
		Control Location: Top	
		L1	
		Pump Drive: Split Shaft	
		L2	
		Pump Model: Hale	
		L3	
		Pump GPM: 1500	
		R2	
		Material: Stainless Steel	
		R2	
		DATE	
		7/26/17	
		DRAWN	
		T.M.	
		SHEET	
		1 OF 2	
		P-W05	
		M.I.N.K.H.A.M	
		7/12/17	
		M.I.N.K.H.A.M	
		47" WIDE X 31" HIGH X 28" DEEP	
		R1	
		47" WIDE X 31" HIGH X 12" DEEP	
		L3	
		47" WIDE X 27" HIGH X 12" DEEP	
		L4	
		Chassis: Spartan 54 - BOC	
		Tank Capacity: 3000	
		U3	
		Apparatus Type: Pumper/Tanker	
		L1	
		56" WIDE X 61" HIGH X 12'26" DEEP	
		L2	
		Control Location: Top	
		L1	
		Pump Drive: Split Shaft	
		L2	
		Pump Model: Hale	
		L3	
		Pump GPM: 1500	
		R2	
		Material: Stainless Steel	
		R2	
		DATE	
		7/26/17	
		DRAWN	
		T.M.	
		SHEET	
		1 OF 2	
		P-W05	
		M.I.N.K.H.A.M	
		7/12/17	
		M.I.N.K.H.A.M	
		47" WIDE X 31" HIGH X 28" DEEP	
		R1	
		47" WIDE X 31" HIGH X 12" DEEP	
		L3	
		47" WIDE X 27" HIGH X 12" DEEP	
		L4	
		Chassis: Spartan 54 - BOC	
		Tank Capacity: 3000	
		U3	
		Apparatus Type: Pumper/Tanker	
		L1	
		56" WIDE X 61" HIGH X 12'26" DEEP	
		L2	
		Control Location: Top	
		L1	
		Pump Drive: Split Shaft	
		L2	
		Pump Model: Hale	
		L3	
		Pump GPM: 1500	
		R2	
		Material: Stainless Steel	
		R2	
		DATE	
		7/26/17	
		DRAWN	
		T.M.	
		SHEET	
		1 OF 2	
		P-W05	
		M.I.N.K.H.A.M	
		7/12/17	
		M.I.N.K.H.A.M	
		47" WIDE X 31" HIGH X 28" DEEP	
		R1	
		47" WIDE X 31" HIGH X 12" DEEP	
		L3	
		47" WIDE X 27" HIGH X 12" DEEP	
		L4	
		Chassis: Spartan 54 - BOC	
		Tank Capacity: 3000	
		U3	
		Apparatus Type: Pumper/Tanker	
		L1	
		56" WIDE X 61" HIGH X 12'26" DEEP	
		L2	
		Control Location: Top	
		L1	
		Pump Drive: Split Shaft	
		L2	
		Pump Model: Hale	
		L3	
		Pump GPM: 1500	
		R2	
		Material: Stainless Steel	
		R2	
		DATE	
		7/26/17	
		DRAWN	
		T.M.	
		SHEET	
		1 OF 2	
		P-W05	
		M.I.N.K.H.A.M	
		7/12/17	
		M.I.N.K.H.A.M	
		47" WIDE X 31" HIGH X 28" DEEP	
		R1	
		47" WIDE X 31" HIGH X 12" DEEP	
		L3	
		47" WIDE X 27" HIGH X 12" DEEP	
		L4	
		Chassis: Spartan 54 - BOC	
		Tank Capacity: 3000	
		U3	
		Apparatus Type: Pumper/Tanker	
		L1	
		56" WIDE X 61" HIGH X 12'26" DEEP	
		L2	
		Control Location: Top	
		L1	
		Pump Drive: Split Shaft	
		L2	
		Pump Model: Hale	
		L3	
		Pump GPM: 1500	
		R2	
		Material: Stainless Steel	
		R2	
		DATE	
		7/26/17	
		DRAWN	
		T.M.	
		SHEET	
		1 OF 2	
		P-W05	
		M.I.N.K.H.A.M	
		7/12/17	
		M.I.N.K.H.A.M	
		47" WIDE X 31" HIGH X 28" DEEP	
		R1	
		47" WIDE X 31" HIGH X 12" DEEP	
		L3	
		47" WIDE X 27" HIGH X 12" DEEP	
		L4	
		Chassis: Spartan 54 - BOC	
		Tank Capacity: 3000	
		U3	
		Apparatus Type: Pumper/Tanker	
		L1	
		56" WIDE X 61" HIGH X 12'26" DEEP	
		L2	
		Control Location: Top	
		L1	
		Pump Drive: Split Shaft	
		L2	
		Pump Model: Hale	
		L3	
		Pump GPM: 1500	
		R2	
		Material: Stainless Steel	
		R2	
		DATE	
		7/26/17	
		DRAWN	
		T.M.	
		SHEET	
		1 OF 2	
		P-W05	
		M.I.N.K.H.A.M	
		7/12/17	
		M.I.N.K.H.A.M	
		47" WIDE X 31" HIGH X 28" DEEP	
		R1	
		47" WIDE X 31" HIGH X 12" DEEP	
		L3	
		47" WIDE X 27" HIGH X 12" DEEP	
		L4	
		Chassis: Spartan 54 - BOC	
		Tank Capacity: 3000	
		U3	
		Apparatus Type: Pumper/Tanker	
		L1	
		56" WIDE X 61" HIGH X 12'26" DEEP	
		L2	
		Control Location: Top	
		L1	
		Pump Drive: Split Shaft	
		L2	
		Pump Model: Hale	
		L3	
		Pump GPM: 1500	
		R2	
		Material: Stainless Steel	
		R2	
		DATE	
		7/26/17	
		DRAWN	
		T.M.	
		SHEET	
		1 OF 2	
		P-W05	
		M.I.N.K.H.A.M	
		7/12/17	
		M.I.N.K.H.A.M	
		47" WIDE X 31" HIGH X 28" DEEP	
		R1	
		47" WIDE X 31" HIGH X 12" DEEP	
		L3	
		47" WIDE X 27" HIGH X 12" DEEP	
		L4	
		Chassis: Spartan 54 - BOC	
		Tank Capacity: 3000	
		U3	
		Apparatus Type: Pumper/Tanker	
		L1	
		56" WIDE X 61" HIGH X 12'26" DEEP	
		L2	
		Control Location: Top	
		L1	
		Pump Drive: Split Shaft	
		L2	
		Pump Model: Hale	
		L3	
		Pump GPM: 1500	
		R2	
		Material: Stainless Steel	
		R2	
		DATE	
		7/26/17	
		DRAWN	
		T.M.	
		SHEET	
		1 OF 2	
		P-W05	
		M.I.N.K.H.A.M	
		7/12/17	
		M.I.N.K.H.A.M	
		47" WIDE X 31" HIGH X 28" DEEP	
		R1	
		47" WIDE X 31" HIGH X 12" DEEP	
		L3	
		47" WIDE X 27" HIGH X 12" DEEP	
		L4	
		Chassis: Spartan 54 - BOC	
		Tank Capacity: 3000	
		U3	
		Apparatus Type: Pumper/Tanker	
		L1	
		56" WIDE X 61" HIGH X 12'26" DEEP	
		L2	
		Control Location: Top	
		L1	
		Pump Drive: Split Shaft	
		L2	
		Pump Model: Hale	
		L3	
		Pump GPM: 1500	
		R2	
		Material: Stainless Steel	
		R2	
		DATE	
		7/26/17	
		DRAWN	
		T.M.	
		SHEET	
		1 OF 2	
		P-W05	
		M.I.N.K.H.A.M	
		7/12/17	
		M.I.N.K.H.A.M	
		47" WIDE X 31" HIGH X 28" DEEP	
		R1	
		47" WIDE X 31" HIGH X 12" DEEP	
		L3	
		47" WIDE X 27" HIGH X 12" DEEP	
		L4	
		Chassis: Spartan 54 - BOC	
		Tank Capacity: 3000	
		U3	
		Apparatus Type: Pumper/Tanker	
		L1	
		56" WIDE X 61" HIGH X 12'26" DEEP	
		L2	
		Control Location: Top	
		L1	
		Pump Drive: Split Shaft	
		L2	
		Pump Model: Hale	
		L3	
		Pump GPM: 1500	
		R2	
		Material: Stainless Steel	
		R2	
		DATE	
		7/26/17	
		DRAWN	
		T.M.	
		SHEET	
		1 OF 2	
		P-W05	
		M.I.N.K.H.A.M	
		7/12/17	
		M.I.N.K.H.A.M	
		47" WIDE X 31" HIGH X 28" DEEP	
		R1	
		47" WIDE X 31" HIGH X 12" DEEP	
		L3	
		47" WIDE X 27" HIGH X 12" DEEP	
		L4	
		Chassis: Spartan 54 - BOC	
		Tank Capacity: 3000	
		U3	
		Apparatus Type: Pumper/Tanker	
		L1	
		56" WIDE X 61" HIGH X 12'26" DEEP	
		L2	
		Control Location: Top	
		L1	
		Pump Drive: Split Shaft	
		L2	
		Pump Model: Hale	
		L3	
		Pump GPM: 1500	
		R2	
		Material: Stainless Steel	
		R2	
		DATE	
		7/26/17	
		DRAWN	
		T.M.	
		SHEET	
		1 OF 2	
		P-W05	
		M.I.N.K.H.A.M	
		7/12/17	
		M.I.N.K.H.A.M	
		47" WIDE X 31" HIGH X 28" DEEP	
		R1	
		47" WIDE X 31" HIGH X 12" DEEP	
		L3	
		47" WIDE X 27" HIGH X 12" DEEP	
		L4	
		Chassis: Spartan 54 - BOC	
		Tank Capacity: 3000	
		U3	
		Apparatus Type: Pumper/Tanker	
		L1	
		56" WIDE X 61" HIGH X 12'26" DEEP	
		L2	
		Control Location: Top	
		L1	
		Pump Drive: Split Shaft	
		L2	
		Pump Model: Hale	
		L3	
		Pump GPM: 1500	
		R2	