

3000-GALLON ELLIPTICAL TANKER

BELLEGROVE FIRE COMPANY / ANNVILLE, PENNSYLVANIA



ALEXIS

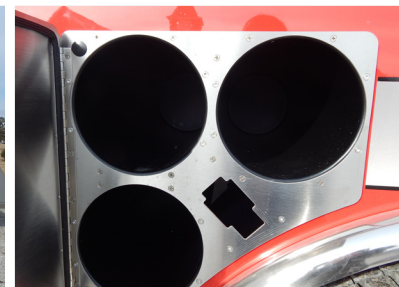


THANK YOU TO BELLEGROVE FIRE COMPANY FOR THE PURCHASE OF THIS UNIT.

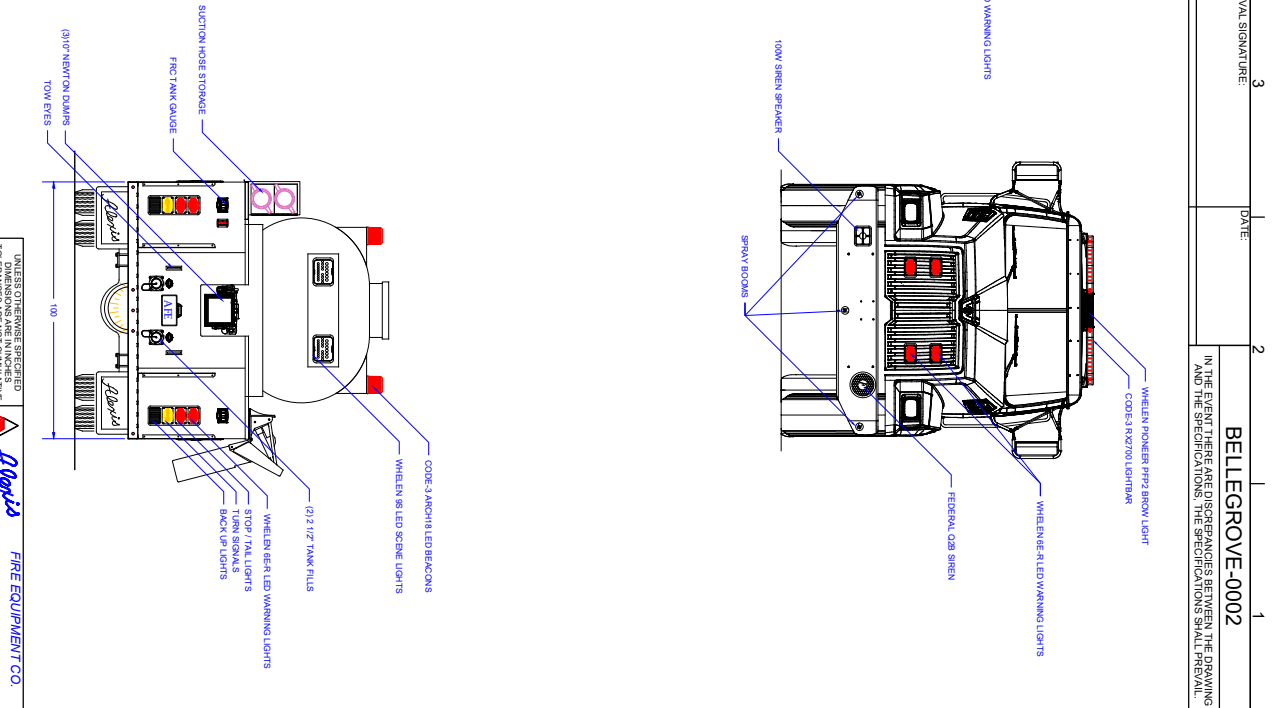
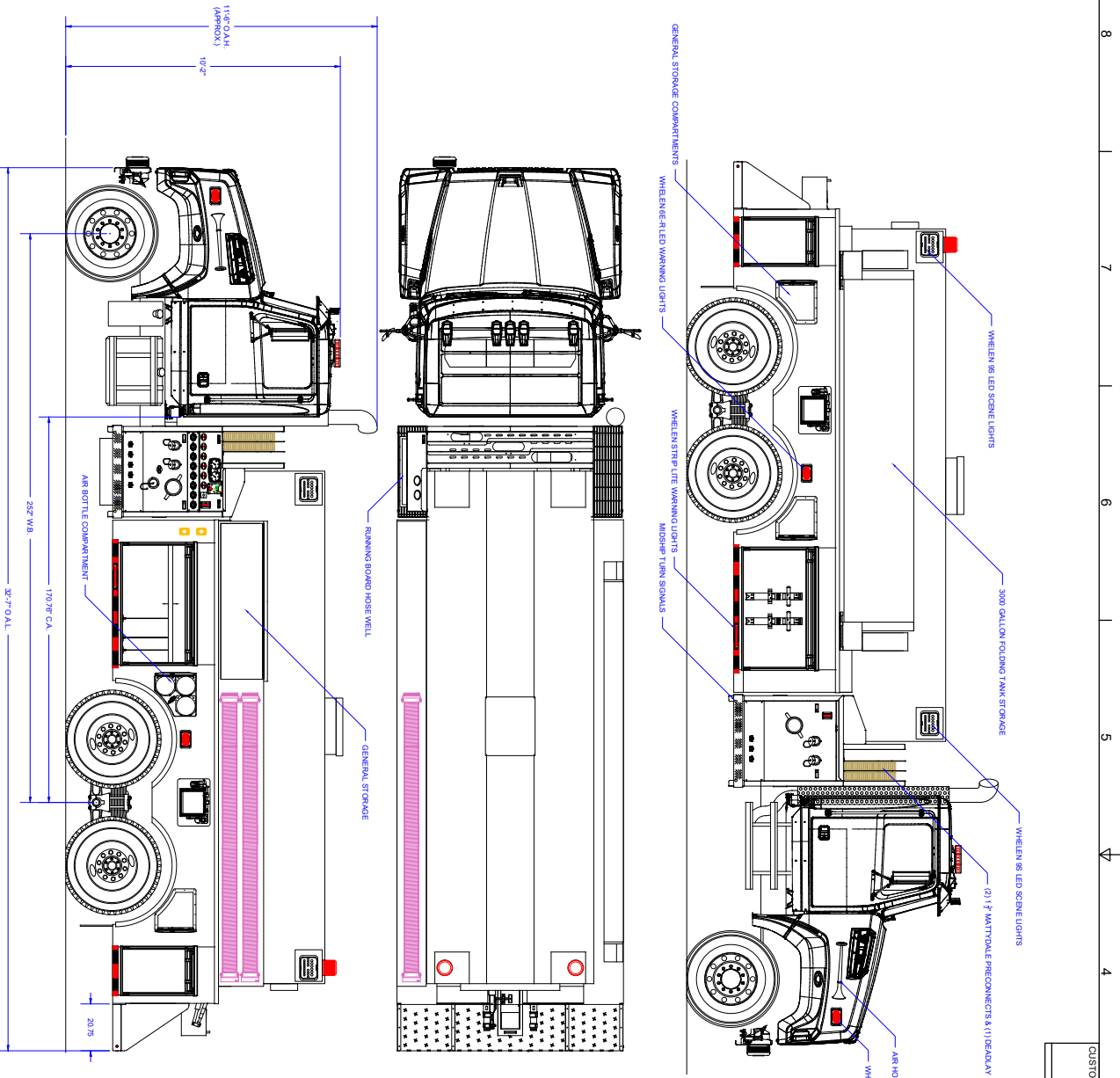


TECHNICAL SPECIFICATIONS

- Western Star 4700SF 2-Door Chassis
- Detroit DD13, 450-HP Diesel Engine
- Allison 4500 EVS Automatic Transmission
- On Spot Automatic Tire chains
- Stainless steel body and sub-frame
- ROM Roll Up Doors
- 3000-Gallon Elliptical Poly Tank with stainless steel jacket
- Two (2) 2 1/2" ball valve Tank fills, rear
- Three (3) Newton 10" square electric dumps with 18" electric dump extensions
- Free floating hose well, left side running board
- Three (3) Electrically controlled spray booms, one (1) each side and center
- Waterous CX, 1000-GPM Pump with left intermediate pump operator's panel
- Four (4) 2 1/2" Discharges, two (2) each side
- One (1) 2 1/2" Gated Suction, left side
- Two (2) 1 1/2" Mattydale Preconnects, behind cab
- One (1) Triple bottle Air bottle compartment, left side wheel well
- Three (3) Wheel well storage compartments, two (2) right and one (1) left side
- Ziamatic Hydraulic Folding Tank bracket for 3000-gallon folding tank
- Suction hose storage compartment, left side with rear access
- Progressive Dynamics on-board battery charger with Viair air compressor
- Kussmaul Super Auto Eject 120-volt shoreline connection
- Audiovox Back-up Camera system with 7" color monitor
- Floor mounted console for emergency switches, cab
- Two (2) Air Horns, one (1) each side of cab hood
- Federal Q2B mechanical Siren, front bumper
- Whelen Electronic Siren with Whelen 100-watt speaker
- Six (6) Whelen LED Scene lights, two (2) each side and two (2) rear
- Code 3 Upper and Whelen Lower LED Warning Light Packages
- Diamond Grade Chevron pattern striping, rear
- 11' 6" Overall height
- 32' 7" Overall length
- 252" Wheelbase
- 171" Cab to Axle
- 18,000 FAWR
- 46,000 RAWR
- 64,000 GVWR



To view more photos and download flyer, please visit us at AlexisFire.com.



RESPONSE HISTORY

REV	DESCRIPTION	DATE	BY	CHK	APP
01	CREATED DRAWING	09/05/17	TK		
02	REVISED	10/09/17	TK		
03	REVISED	10/10/17	TK		

PUMP INFO

Serial Location:	Under Tank
Make:	TRU
Model:	EMERSON S300
Capacity:	3000
Material:	Stainless Steel

COMPARTMENT DIMENSIONS

COMP #	DOOR OPENING SIZES
1 & 8	57" WIDE X 27" HIGH X 28" DEEP
12 & 13	19" WIDE X 27" HIGH X 28" DEEP

UNLESS OTHERWISE SPECIFIED TOLERANCES ARE IN INCHES DIMENSIONS ARE NOT CUMULATIVE

REVISION NO.	DESCRIPTION	DATE
001	ISSUED FOR CONSTRUCTION	09/05/17
002	REVISED	10/09/17
003	REVISED	10/10/17