

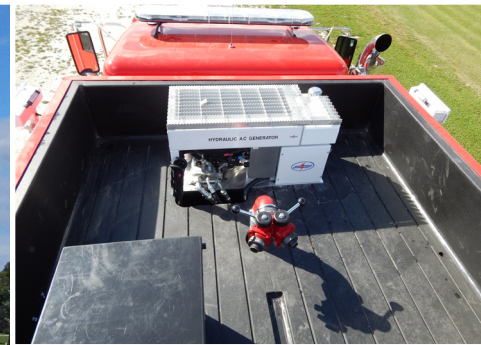
# SIDE CONTROL PUMPER



**WABASH FIRE PROTECTION DISTRICT**  
MATTOON, ILLINOIS

## TECHNICAL SPECS

- Peterbilt 348 2-Door Chassis
- Paccar PX-9, 330-HP Diesel Engine
- Allison 3000 EVS Automatic Transmission
- Heavy Duty 3/16" Aluminum Body
- ROM Roll Up compartment Doors
- 1000-Gallon Poly Tank
- One (1) 2 1/2" Fireman's Friend Tank fill, rear
- Waterous CXVK, 1250-GPM Pump
- Left side pump operator's panel behind roll up door
- Two (2) 2 1/2" Discharges, one (1) each side
- Three (3) 3" Discharges, one (1) right side, one (1) rear and one (1) over pump
- Two (2) 2 1/2" Gated Suction, one (1) each side
- Two (2) 1 1/2" Cartridge Lay Preconnects, behind cab
- Four (4) Triple bottle Air bottle compartments, two (2) each side wheel wells
- Four (4) FlameFighter walk-away air pack brackets, right side
- One (1) Backboard rack, rear transverse compartment
- Ladder/Suction hose storage compartment, through tank with rear access
- Turtle Tile on floors and/or shelves and trays of compartments
- Air coupling for external compressor
- Code 3 Electronic Siren with Cast Products speaker
- Two (2) Air Horns, one (1) each side of hood
- Three (3) FRC 12-volt LED Scene lights, one (1) each side and one (1) brow
- Smart Power 5500-watt Generator with 120-volt system
- One (1) Electric cord reel with 100-ft of 10/3 cord and junction box, right side
- Two (2) Extenda-Lite 120-volt 750-watt telescopic lights, one (1) each side
- Two (2) Extenda-Lite 120-volt 750-watt telescopic tripod lights, rear
- Whelen LED Warning Light Package
- Chevron pattern striping, rear
- 9' 10" Overall height
- 26' 10" Overall length
- 193" Wheelbase
- 123" Cab to Axle
- 12,000 FAWR
- 26,000 RAWR
- 38,000 GVWR



To view more photos,  
visit [www.AlexisFire.com](http://www.AlexisFire.com)

**WE WOULD LIKE TO THANK  
THE WABASH FIRE PROTECTION  
DISTRICT FOR THEIR  
BUSINESS.**



**Demand To Be Different.**

