

12-FOOT RESPONSE ONE UNIT



CITY OF SPRINGFIELD FIRE DEPARTMENT SPRINGFIELD, ILLINOIS

TECHNICAL SPECS

- Ford F-550 XL 4-Door 4x4 DRW Chassis
- Power Stroke 6.7L V-8 Diesel Engine
- Ford TorqShift 6-speed Automatic Transmission
- Heavy Duty 3/16" Aluminum Body
- Amdor brand Roll Up Doors with painted finish
- One (1) Reese type hitch with electrical connections, rear
- One (1) Vertical Air bag Rack, left side compartment
- One (1) Stokes basket rack, transverse area
- One (1) Backboard Rack for two (2) backboards, transverse area
- One (1) Vertical mount tool board, rear compartment tray
- Progressive Dynamics on-board battery charger
- Kussmaul Super Auto Eject 120-volt shoreline
- Jotto Desk console for emergency switches, cab dash
- Code 3 Electronic Siren with two (2) 100-watt Whelen speakers
- Two (2) Federal GHSCENE lights, one (1) each side
- Two (2) Akron Scenestar 12-volt 220-watt LED telescopic Lights, rear
- Whelen LED Warning Light Package
- Chevron pattern striping, rear door
- 7' 9" Overall height
- 26' Overall length
- 200" Wheelbase
- 84" Cab to Axle
- 7,000 FAWR
- 14,700 RAWR
- 19,500 GVWR

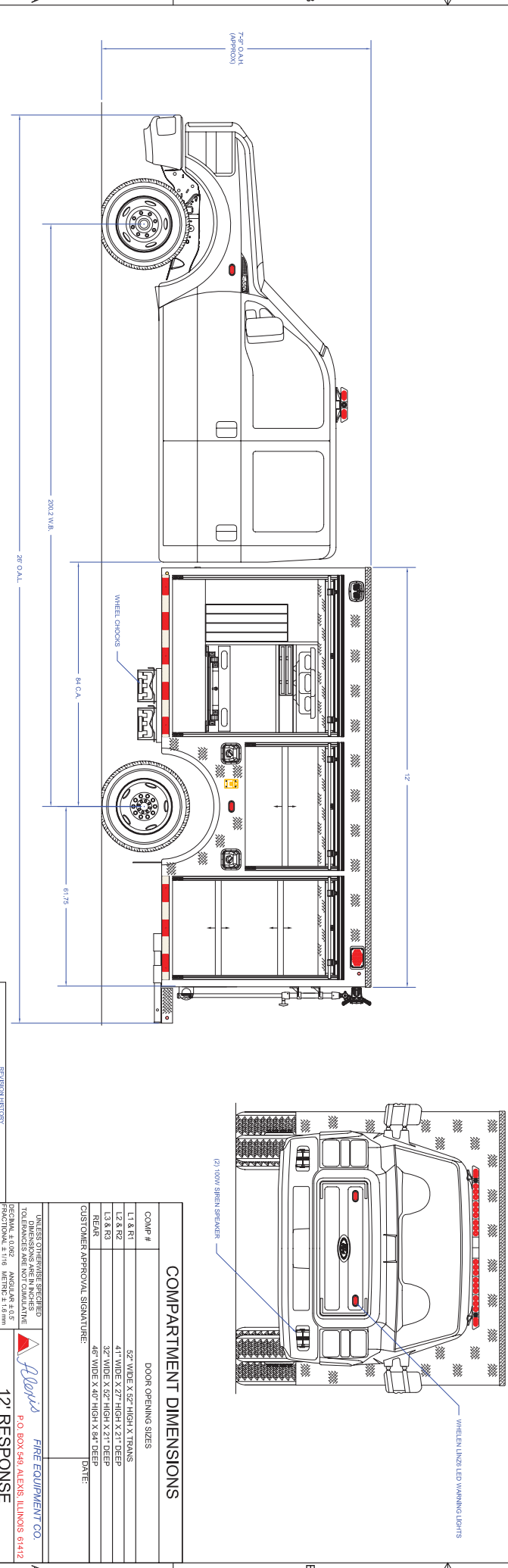
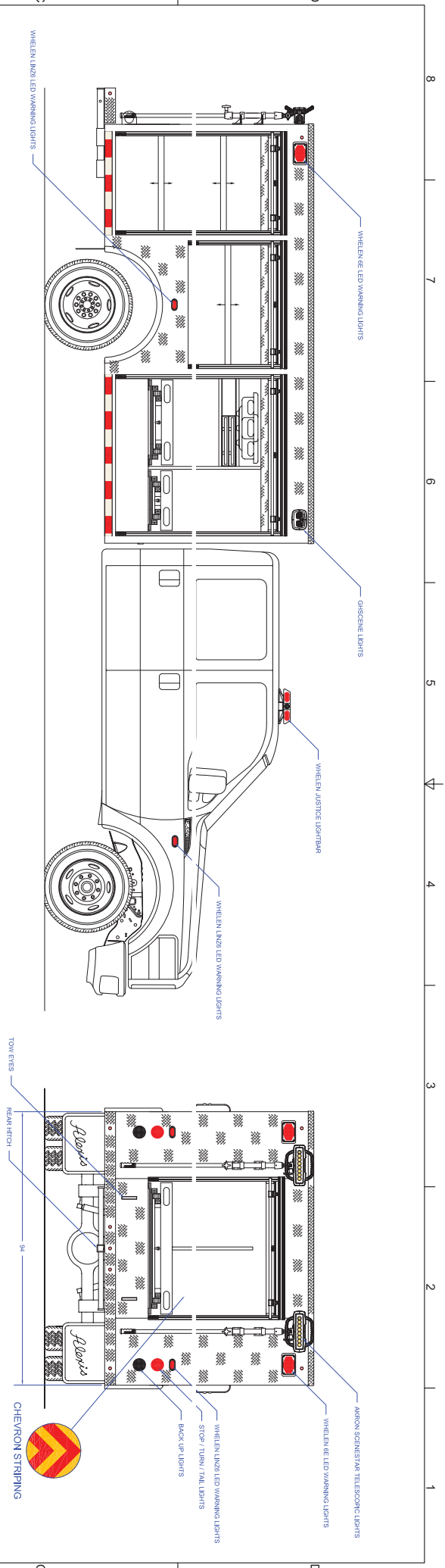


To view more photos,
visit www.AlexisFire.com

WE WOULD LIKE TO THANK
THE CITY OF SPRINGFIELD FIRE
DEPARTMENT FOR THEIR BUSINESS.



Demand To Be Different.



COMPARTMENT DIMENSIONS	
COMP #	DOOR OPENING SIZES
L1 & R1	52" WIDE X 52" HIGH X TRANS
L2 & R2	41" WIDE X 27" HIGH X 21" DEEP
L3 & R3	32" WIDE X 52" HIGH X 21" DEEP
REAR	46" WIDE X 40" HIGH X 64" DEEP
CUSTOMER APPROVAL SIGNATURE: _____ DATE: _____	

UNLESS OTHERWISE SPECIFIED
DIMENSIONS ARE IN INCHES
TOLERANCES ARE:
FRACTIONAL ± 1/16 METRIC ± 1.6mm
ANGULAR ± 0.02°
FRACTIONAL ± 1/16 METRIC ± 1.6mm

Alexis FIRE EQUIPMENT CO.
P.O. BOX 560 ALEXIS, ILLINOIS 61412

REV	DESCRIPTION	DATE	BY	APP
01	CHANGE ORDER NO. 121712	LTC		
SPRINGFIELD-0001				
IN THE EVENT THERE ARE DISCREPANCIES BETWEEN THE DRAWING AND THE SPECIFICATIONS, THE SPECIFICATIONS SHALL PREVAIL.				

DRAWN	MELISSA TINKHAM	DATE	04/10/12
SIZE	36"X48"	SCALE	1/2" = 1'
PROJECT	SPRINGFIELD FIRE DEPARTMENT	SHEET	1 OF 2
CONTRACT #	S710		