

CUSTOM SIDE CONTROL PUMPER



CITY OF ELMIRA FIRE DEPARTMENT ELMIRA, NEW YORK

TECHNICAL SPECS

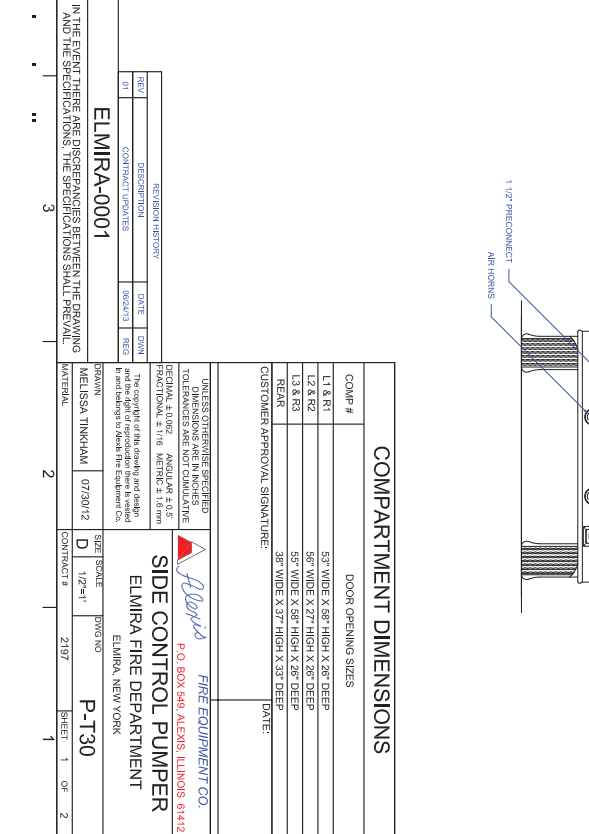
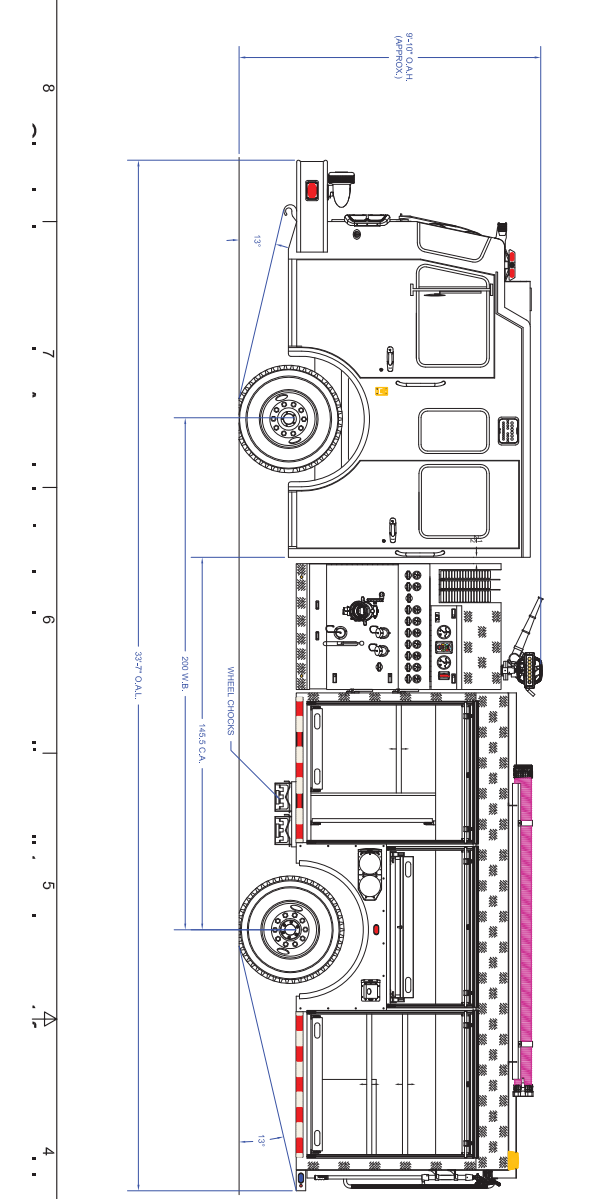
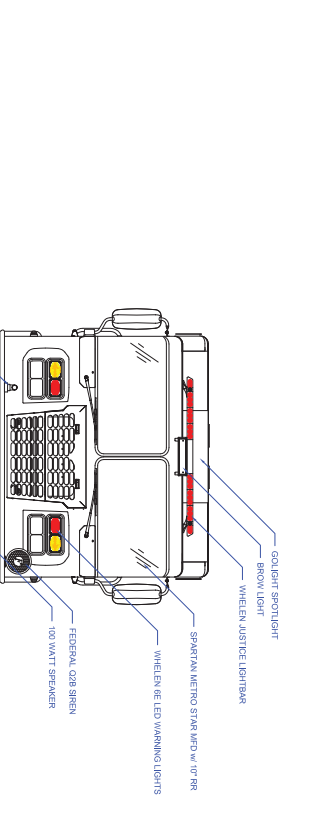
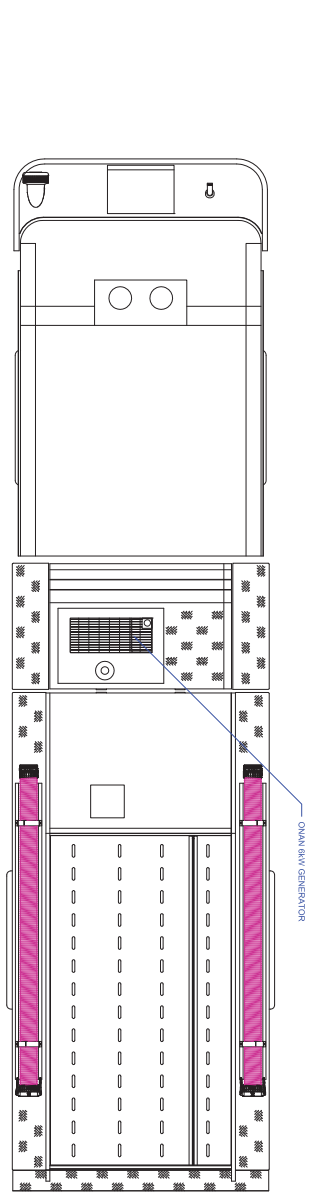
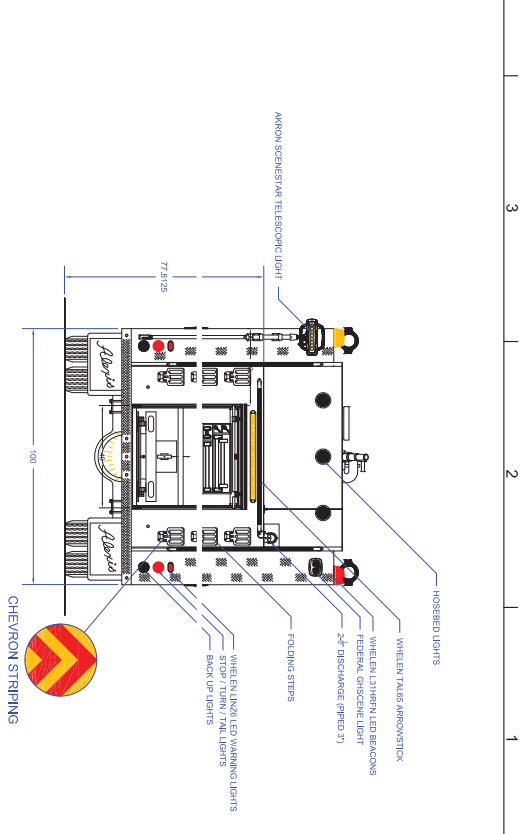
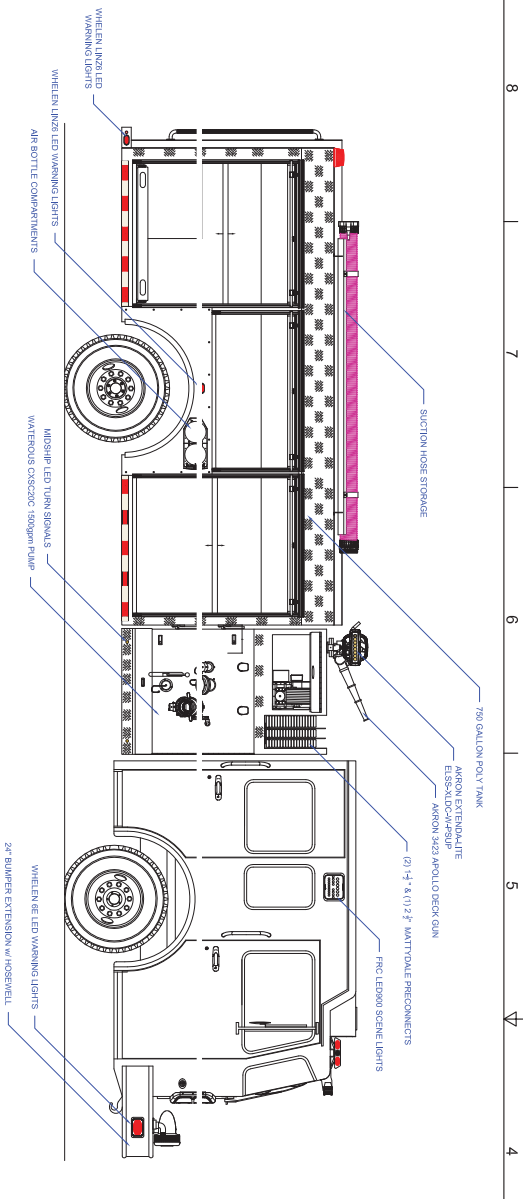
- Spartan Metro Star MFD 10" raised roof Chassis
- Cummins ISL9, 450-HP Diesel Engine
- Allison 3000 EVS Automatic Transmission
- Four (4) man cab with three (3) SCBA seats
- Heavy Duty 3/16" Aluminum Body with Amdor brand Roll Up Doors
- 750-Gallon Poly Tank
- Waterous CXSC 1500-GPM Pump with left side pump operator's panel
- Three (3) 2 1/2" Discharges, two (2) left side and one right side
- Three (3) 3" Discharges, one (1) right side, one (1) rear and one (1) over pump
- Akron Apollo Deck gun with tips and ground mounts
- Two (2) 2 1/2" Gated suction, one (1) each side
- One (1) 2 1/2" and two (2) 1 1/2" Mattydale Preconnects, top of pump module
- 24" Front bumper extension with one (1) 1 1/2" Preconnect and hose well
- On-Spot Automatic Tire chains
- Two (2) EMS compartments with shelves and one (1) map box, cab interior
- Two (2) Dual bottle Air bottle compartments, one (1) each side
- One (1) Vertical pull-out smooth aluminum tool board, left side
- Turtle tile on floors and/or shelves and trays of compartments
- Two (2) Suction hose storage gutters, one (1) each side
- Ladder storage through tank with rear compartment access
- Federal Electronic Siren with Cast products 100-watt speaker
- Kussmaul 35/10 on-board battery charger with Auto Eject 120-volt shoreline
- FRC cab scene lights, one (1) brow and one (1) each side
- One (1) Federal GHSCENE light, rear
- One (1) Extenda-Lite 12-volt 220-watt telescopic light, rear
- Smart Power 6-kW Hydraulically driven Generator with 120-volt system
- Two (2) Akron Extenda-Lite 220-watt LED Telescopic lights, one (1) each side
- One (1) Akron Electric cord reel with 150-ft of 10/3 cord and junction box
- Whelen LED Warning Light Package
- Chevron pattern striping, rear
- 9' 6" Overall height
- 33' 7" Overall length
- 200" Wheelbase
- 146" Cab to Axle
- 18,000 FAWR
- 27,000 RAWR
- 45,000 GVWR



To view more photos,
visit www.AlexisFire.com

WE WOULD LIKE TO THANK THE
CITY OF ELMIRA FIRE DEPARTMENT
FOR THEIR BUSINESS.





COMPARTMENT DIMENSIONS

COMP #	DOOR OPENING SIZES
L1 & R1	53" WIDE X 36" HIGH X 26" DEEP
L2 & R2	56" WIDE X 27" HIGH X 26" DEEP
L3 & R3	53" WIDE X 36" HIGH X 26" DEEP
R4 & L4	38" WIDE X 37" HIGH X 33" DEEP

CUSTOMER APPROVAL SIGNATURE: _____ DATE: _____

UNLESS OTHERWISE SPECIFIED, DIMENSIONS ARE IN INCHES. DIMENSIONS ARE IN METERS. METRIC DIMENSIONS ARE IN PARENTHESES. FUNCTIONAL ± 1/16" METRIC ± 1.6mm. THIS COMPLETE SET OF DRAWINGS AND DETAILS IS THE PROPERTY OF ALEXIS FIRE EQUIPMENT CO. AND IS TO BE USED ONLY FOR THE EQUIPMENT SHOWN. ANY REPRODUCTION OR USE WITHOUT THE WRITTEN PERMISSION OF ALEXIS FIRE EQUIPMENT CO. IS STRICTLY PROHIBITED.

Alexis FIRE EQUIPMENT CO.
P.O. BOX 949 ALEXIS, ILLINOIS 61812

SIDE CONTROL PUMPER
ELMIRA FIRE DEPARTMENT
ELMIRA, NEW YORK

DRIVAN ME/ISSA TINKHAM 07/20/12
SIZE: 30000 DOWNTON
ID: 12741 CONTRACT # 2197 SHEET 1 OF 2

ELMIRA-0001
IN THE EVENT THERE ARE DISCREPANCIES BETWEEN THE DRAWING AND THE SPECIFICATIONS, THE SPECIFICATIONS SHALL PREVAIL.

REV#	DESCRIPTION	DATE	BY
01 <td>CONTRACT UPDATES <td>06/04/13 <td>MEG </td></td></td>	CONTRACT UPDATES <td>06/04/13 <td>MEG </td></td>	06/04/13 <td>MEG </td>	MEG