

CUSTOM TOP CONTROL RESCUE PUMPER



CITY OF BETTENDORF FIRE DEPARTMENT
BETTENDORF, IOWA

TECHNICAL SPECS

- HME 1871 W, MFDxL 12" raised roof Chassis
- Cummins ISL 9, 400-HP Diesel Engine
- Allison 3000 EVS Automatic Transmission
- Heavy Duty 3/16" Aluminum Body and Amdor brand Roll Up Doors
- 1000-Gallon Poly Tank
- Hale QMAX150, 1500-GPM Pump
- Five (5) 2 1/2" Discharges, two (2) left side, one (1) right side and two (2) rear
- Two (2) 3" Discharges, one (1) right side and one (1) over pump for deck gun
- Two (2) 2 1/2" Gated Suction, one (1) each side
- One (1) Akron Apollo Deck gun with stream shaper, tips and mounts
- One (1) 2 1/2" and one (1) 1 1/2" Mattydale Preconnect, across top of body
- Two (2) 1 1/2" Cartridge Lay Preconnects, front of body
- 24" Front bumper extension with preconnected extrication tools
- On Spot Automatic Tire Chains
- EMS compartment, map storage and glove storage, cab interior
- Air bottle storage for three (3) spare bottles, left side compartment
- Two (2) Hose wells, one (1) each side running board
- Three (3) Dual bottle Air bottle compartments, two (2) right side and one (1) left
- Zico Dual arm Hydraulic Ladder rack with pike pole storage, right side
- Two (2) Suction hose storage gutters, left side
- Progressive Dynamics on-board battery charger with Viair air compressor
- Audiovox color back up camera with 7" color monitor
- Federal EQ2B Electronic Siren with 200-watt speaker
- Whelen 12-volt LED scene light package
- Onan 10 kW Hydraulic Generator with 120-volt system
- One (1) Akron Electric cord reel with 150-ft of 10/3 cord and junction box
- Night Scan Profiler light tower with three 1500-watt FRC halogen lights
- Whelen LED Warning Light Package
- Chevron pattern striping, rear
- 9' 11" Overall height
- 33' 11" Overall length
- 217" Wheelbase
- 157" Cab to Axle
- 20,000 FAWR
- 31,000 RAWR
- 51,000 GVWR

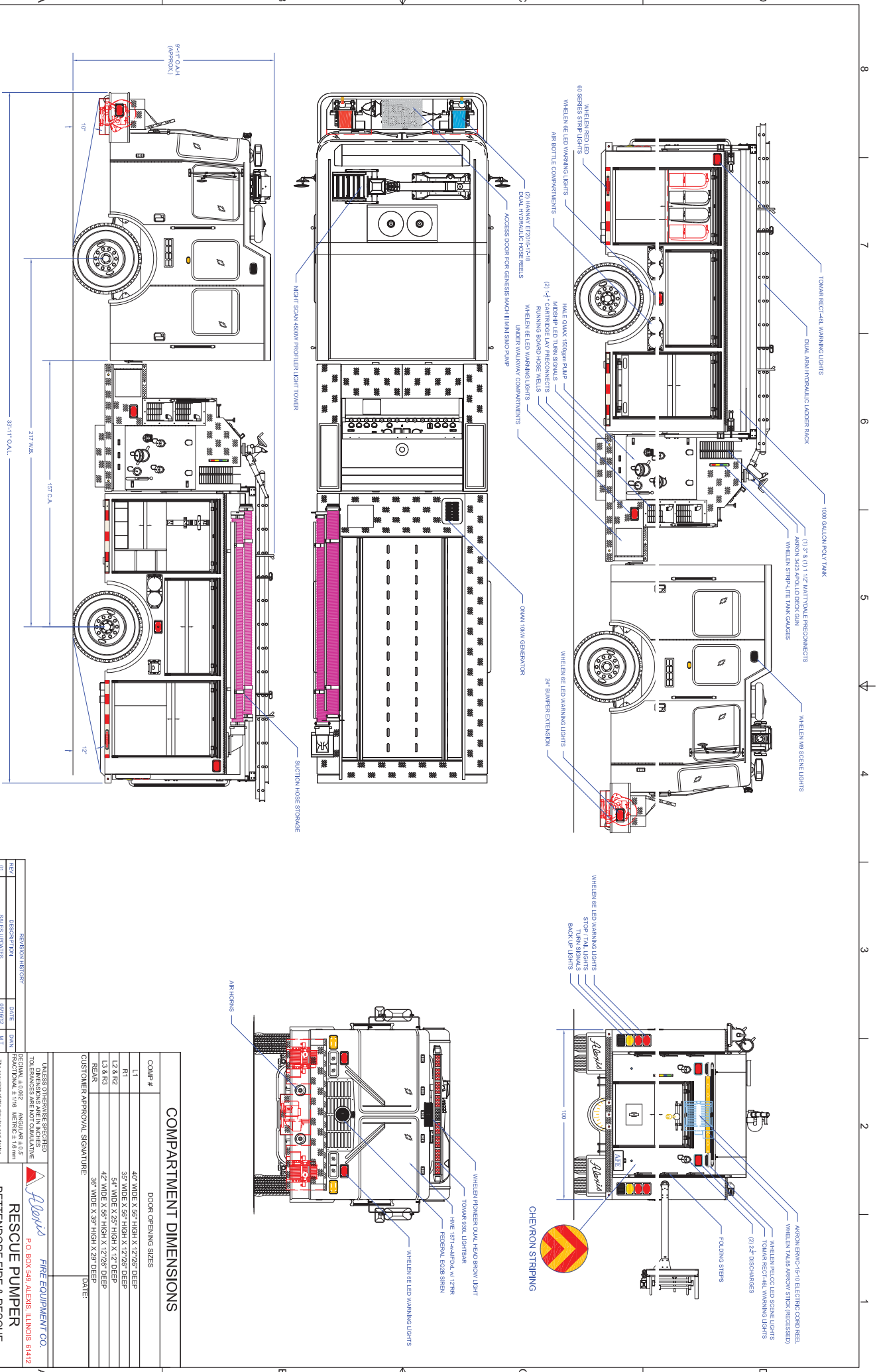


To view more photos, visit www.AlexisFire.com

WE WOULD LIKE TO THANK THE CITY OF BETTENDORF FIRE DEPARTMENT FOR THEIR BUSINESS.



Demand To Be Different.



COMPARTMENT DIMENSIONS

COMP #	DOOR OPENING SIZES
L1	40" WIDE X 95" HIGH X 12/26" DEEP
R1	35" WIDE X 95" HIGH X 12/26" DEEP
L2 & R2	54" WIDE X 95" HIGH X 12" DEEP
L3 & R3	42" WIDE X 95" HIGH X 12/26" DEEP
R4	38" WIDE X 39" HIGH X 21" DEEP

CUSTOMER APPROVAL SIGNATURE: _____ DATE: _____

UNLESS OTHERWISE SPECIFIED DIMENSIONS ARE IN INCHES
 DECIMALS - 4/1000 ANGLES - 1/16"
 FRACTIONAL ± 1/16 MILLIMETER ± 0.1mm

RESISTANCE

TEST	DESCRIPTION	DATE	QWNT
01	SALES UPDATES		M.T
02	CONTRACT UPDATES		M.T

B-DORF-0512

IN THE EVENT THERE ARE DISCREPANCIES BETWEEN THE DRAWING AND THE SPECIFICATIONS, THE SPECIFICATIONS SHALL PREVAIL.

RESCUE PUMPER
 BETENDORF FIRE & RESCUE
 BETENDORF, IOWA

P-106

DATE: 05/10/12
 SIZE: 30'00"
 CONTRACT # 2200

