

CUSTOMER APPROVAL SIGNATURE:


DATE:

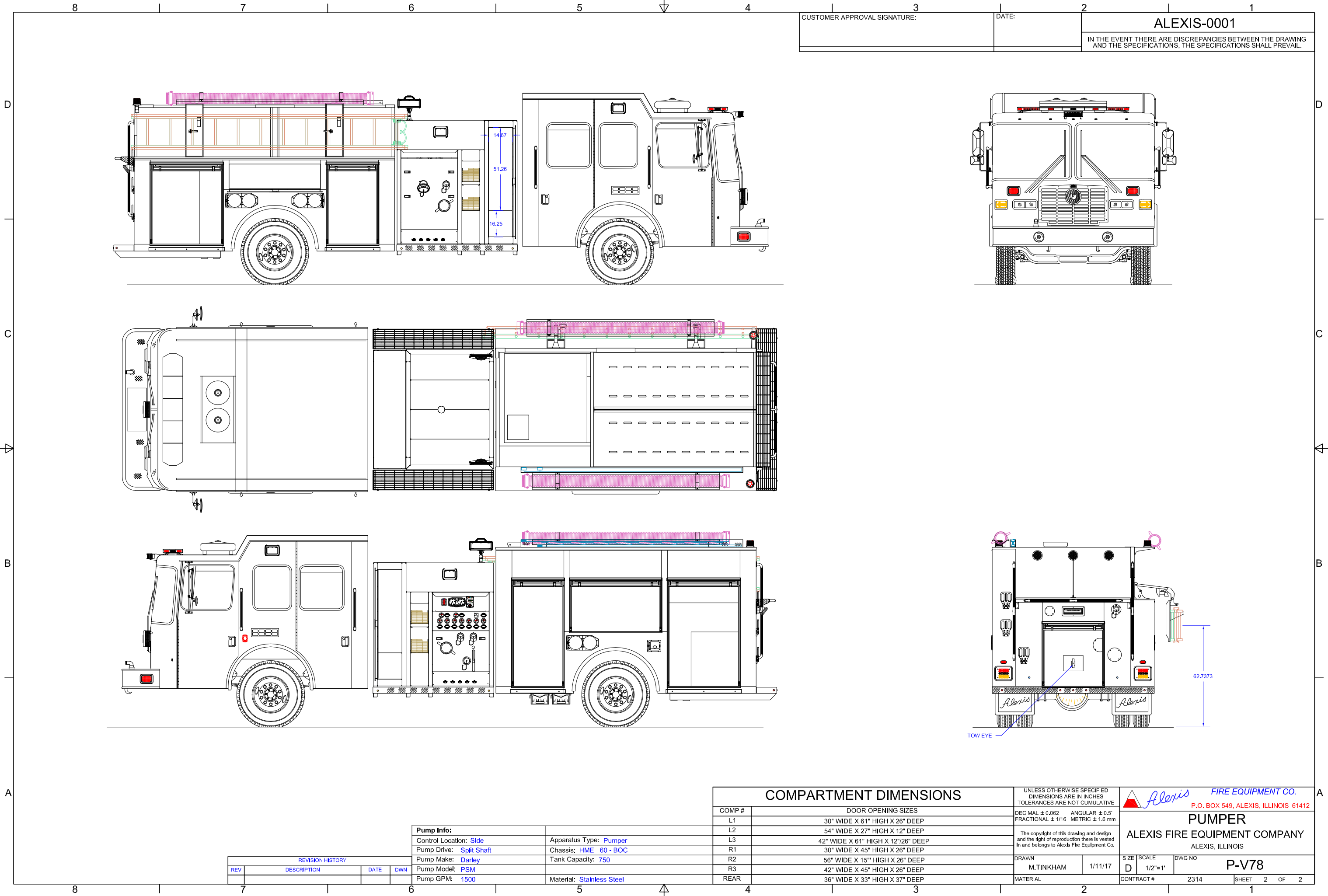
ALEXIS-0001

IN THE EVENT THERE ARE DISCREPANCIES BETWEEN THE DRAWING AND THE SPECIFICATIONS, THE SPECIFICATIONS SHALL PREVAIL.

Pump Info:				Apparatus Type: Pumper
Control Location: Side				Chassis: HME 60 - BOC
Pump Drive: Split Shaft				Tank Capacity: 750
Pump Make: Darley				
Pump Model: PSM				
Pump GPM: 1500				Material: Stainless Steel

REVISION HISTORY			
REV	DESCRIPTION	DATE	DWN


COMPARTMENT DIMENSIONS		UNLESS OTHERWISE SPECIFIED DIMENSIONS ARE IN INCHES TOLERANCES ARE NOT CUMULATIVE		 FIRE EQUIPMENT CO. P.O. BOX 549, ALEXIS, ILLINOIS 61412		
COMP #	DOOR OPENING SIZES	DECIMAL ± 0.062 FRACTIONAL ± 1/16	ANGULAR ± 0.5° METRIC ± 1.6 mm	PUMPER ALEXIS FIRE EQUIPMENT COMPANY ALEXIS, ILLINOIS		
L1	30" WIDE X 61" HIGH X 26" DEEP	The copyright of this drawing and design and the right of reproduction there is vested in and belongs to Alexis Fire Equipment Co.				
L2	54" WIDE X 27" HIGH X 12" DEEP					
L3	42" WIDE X 61" HIGH X 12"/26" DEEP					
R1	30" WIDE X 45" HIGH X 26" DEEP					
R2	56" WIDE X 15" HIGH X 26" DEEP					
R3	42" WIDE X 45" HIGH X 26" DEEP	DRAWN	1/11/17	SIZE	SCALE	DWG NO
REAR	36" WIDE X 33" HIGH X 37" DEEP	M.TINKHAM		D	1/2"=1'	P-V78
		MATERIAL		CONTRACT #	2314	SHEET 1 OF 2



CUSTOMER APPROVAL SIGNATURE: DATE: ALEXIS-0001
IN THE EVENT THERE ARE DISCREPANCIES BETWEEN THE DRAWING AND THE SPECIFICATIONS, THE SPECIFICATIONS SHALL PREVAIL.

Pump Info:		Apparatus Type:	Pumper
Control Location:		Chassis:	HME 60 - BOC
Pump Drive:		Tank Capacity:	750
Pump Make:			
Pump Model:			
Pump GPM:		Material:	Stainless Steel

REVISION HISTORY			
REV	DESCRIPTION	DATE	DWN

COMPARTMENT DIMENSIONS				UNLESS OTHERWISE SPECIFIED DIMENSIONS ARE IN INCHES TOLERANCES ARE NOT CUMULATIVE				 FIRE EQUIPMENT CO. P.O. BOX 549, ALEXIS, ILLINOIS 61412			
COMP #	DOOR OPENING SIZES			DECIMAL ± 0.062		ANGULAR ± 0.5°		<div>PUMPER</div> <div>ALEXIS FIRE EQUIPMENT COMPANY</div> <div>ALEXIS, ILLINOIS</div>			
L1	30" WIDE X 61" HIGH X 26" DEEP			FRACTIONAL ± 1/16		METRIC ± 1.6 mm					
L2	54" WIDE X 27" HIGH X 12" DEEP										
L3	42" WIDE X 61" HIGH X 12"/26" DEEP										
R1	30" WIDE X 45" HIGH X 26" DEEP										
R2	56" WIDE X 15" HIGH X 26" DEEP										
R3	42" WIDE X 45" HIGH X 26" DEEP										
REAR	36" WIDE X 33" HIGH X 37" DEEP										
				DRAWN		1/11/17		SIZE	SCALE	DWG NO	
				M.TINKHAM				D	1/2"=1'	P-V78	
				MATERIAL				CONTRACT #		2314	
								SHEET		2 OF 2	

Alexis FIRE EQUIPMENT CO.
P.O. BOX 549, ALEXIS, ILLINOIS 61412
PUMPER
ALEXIS FIRE EQUIPMENT COMPANY
ALEXIS, ILLINOIS