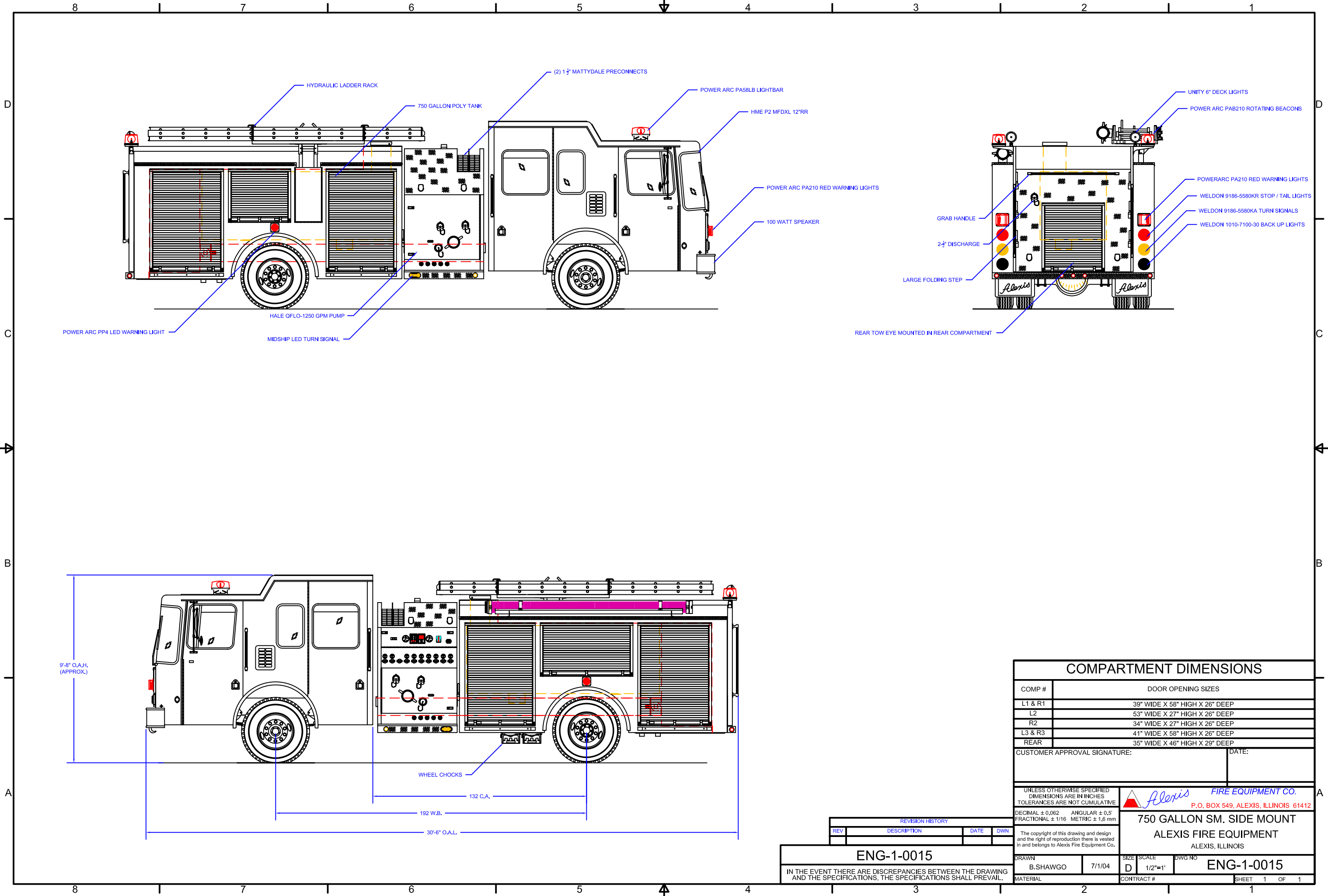


Y:\Trucks\Proposal Units\BASE BODY\ENG-1-0015.dwg, 9/24/2004 1:17:52 PM, bradley



COMPARTMENT DIMENSIONS	
COMP #	DOOR OPENING SIZES
L1 & R1	39" WIDE X 58" HIGH X 26" DEEP
L2	53" WIDE X 27" HIGH X 26" DEEP
R2	34" WIDE X 27" HIGH X 26" DEEP
L3 & R3	41" WIDE X 58" HIGH X 26" DEEP
REAR	35" WIDE X 46" HIGH X 29" DEEP

CUSTOMER APPROVAL SIGNATURE: \_\_\_\_\_ DATE: \_\_\_\_\_

UNLESS OTHERWISE SPECIFIED DIMENSIONS ARE IN INCHES TOLERANCES ARE NOT CUMULATIVE

DECIMAL ± 0,062 ANGULAR ± 0,5° FRACTIONAL ± 1/16 METRIC ± 1,6 mm

**Alexis FIRE EQUIPMENT CO.**  
P.O. BOX 549, ALEXIS, ILLINOIS 61412

**750 GALLON SM. SIDE MOUNT**  
**ALEXIS FIRE EQUIPMENT**  
ALEXIS, ILLINOIS

The copyright of this drawing and design and the right of reproduction there is vested in and belongs to Alexis Fire Equipment Co.

DRAWN: B. SHAWGO 7/1/04  
MATERIAL: \_\_\_\_\_

SIZE: D 1/2"=1"  
SCALE: \_\_\_\_\_

DWG NO: **ENG-1-0015**  
CONTRACT #: \_\_\_\_\_

SHEET 1 OF 1

REVISION HISTORY			
REV	DESCRIPTION	DATE	DWN

**ENG-1-0015**

IN THE EVENT THERE ARE DISCREPANCIES BETWEEN THE DRAWING AND THE SPECIFICATIONS, THE SPECIFICATIONS SHALL PREVAIL.