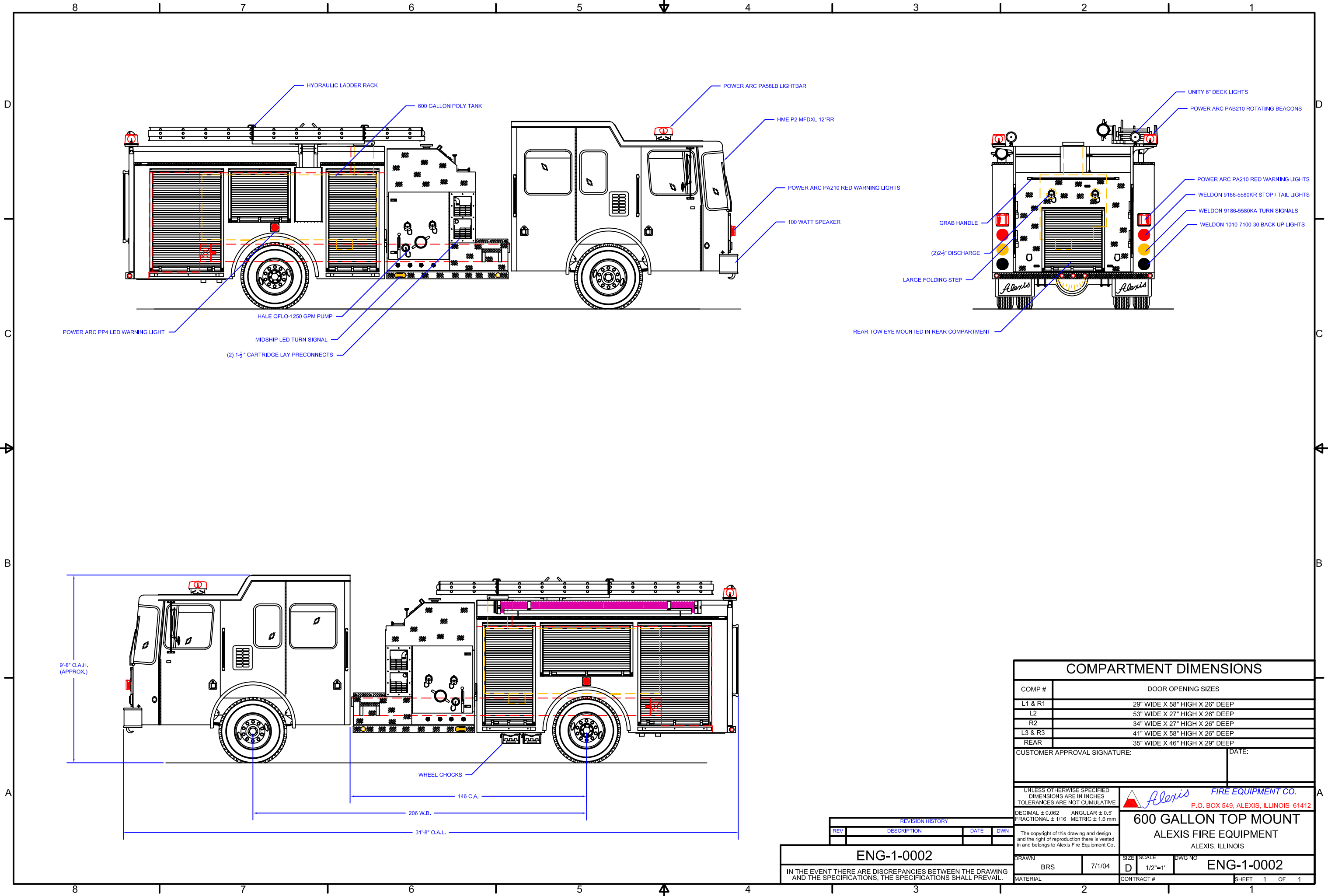


Y:\Trucks\Proposal Units\BASE BODY\ENG-1-0002.dwg, 9/24/2004 1:16:09 PM, bradley



COMPARTMENT DIMENSIONS	
COMP #	DOOR OPENING SIZES
L1 & R1	29" WIDE X 58" HIGH X 26" DEEP
L2	53" WIDE X 27" HIGH X 26" DEEP
R2	34" WIDE X 27" HIGH X 26" DEEP
L3 & R3	41" WIDE X 58" HIGH X 26" DEEP
REAR	35" WIDE X 46" HIGH X 29" DEEP

CUSTOMER APPROVAL SIGNATURE: _____ DATE: _____

UNLESS OTHERWISE SPECIFIED DIMENSIONS ARE IN INCHES TOLERANCES ARE NOT CUMULATIVE

DECIMAL ± 0.062 ANGULAR ± 0.5° FRACTIONAL ± 1/16 METRIC ± 1.6 mm

Alexis FIRE EQUIPMENT CO.
P.O. BOX 549, ALEXIS, ILLINOIS 61412

600 GALLON TOP MOUNT
ALEXIS FIRE EQUIPMENT
ALEXIS, ILLINOIS

The copyright of this drawing and design and the right of reproduction there is vested in and belongs to Alexis Fire Equipment Co.

DRAWN: BRS DATE: 7/1/04 SIZE: D SCALE: 1/2"=1' DWG NO: ENG-1-0002

MATERIAL: _____ CONTRACT #: _____ SHEET: 1 OF 1

REVISION HISTORY			
REV	DESCRIPTION	DATE	DWN
ENG-1-0002			
IN THE EVENT THERE ARE DISCREPANCIES BETWEEN THE DRAWING AND THE SPECIFICATIONS, THE SPECIFICATIONS SHALL PREVAIL.			