

HME 80-FOOT AERIAL DEMO



TECHNICAL SPECS

- HME Spectr MFDxL 12" notched roof Chassis
- Cummins ISL 9 , 450-HP Diesel Engine
- Allison 3000EVS Automatic Transmission
- Six (6) Man cab Seating with five (5) SCBA seats
- Stainless Steel Body with Roll Up compartment Doors
- Galvanized Frame Rails
- 400-Gallon Poly Water Tank
- Hale QMAX 1500-GPM Pump with left side operator's panel
- Four (4) 2 1/2" Discharges, two (2) each side
- One (1) 4" Pump to Aerial Discharge
- Two (2) 1 1/2" and one (1) 2 1/2" Mattydale Crosslays, top of pump module
- One (1) 2 1/2" Gated Suction, left side
- 21" Front Bumper Extension with center hosewell
- Ladder storage in the Torque Box
- Side Stack hose bed with Aluminum cover
- Four (4) SCBA wheel
- Manual control Ladder
- Akron stream Master Electric Monitor with Akromatic Master Stream Nozzle
- On-board Battery charger with Super Auto Eject
- Back-Up Camera System with 7" LCD monitor
- Harrison 6kW Hydraulic Generator
- Intercom two (2) locations, Turntable and Platform
- Dual Stutter Tone Air Horns, front bumper
- Whelen Electronic Siren with two (2) speakers front bumper
- FRC LED Scene Light Package
- Power Arc LED Warning Light Package
- Chevron pattern striping, rear
- 11' 7" Overall height
- 38' 3" Overall length
- 220" Wheelbase
- 160" Cab to Axle
- 21,500 FAWR
- 33,000 RAWR
- 54,500 GVWR



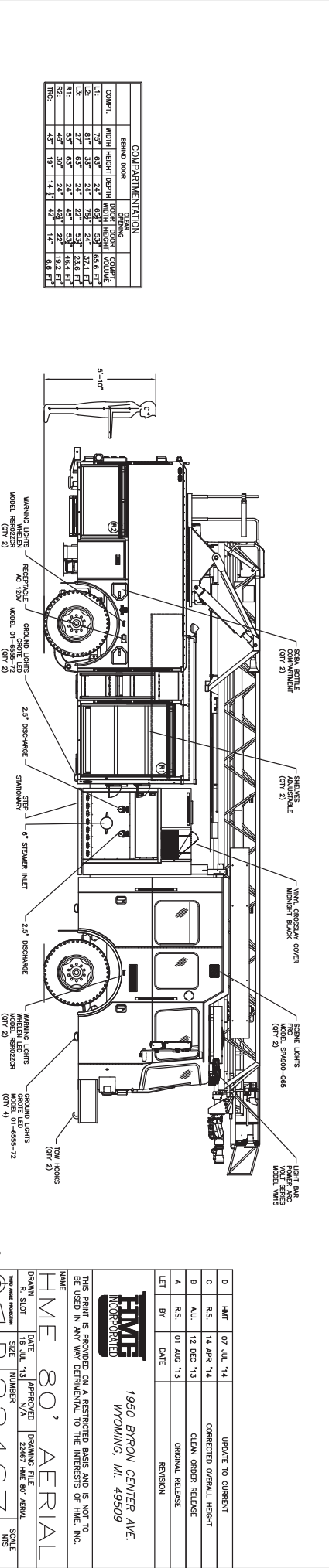
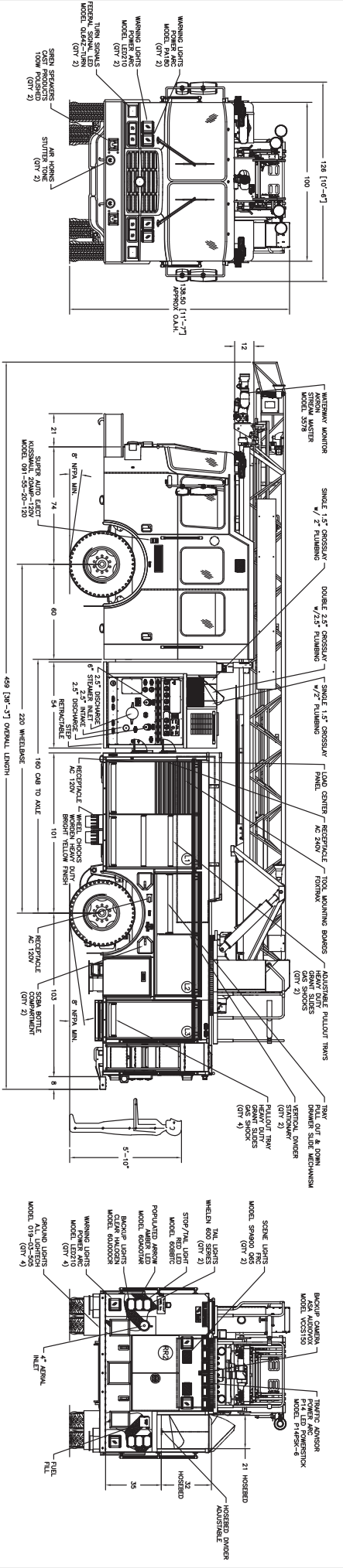
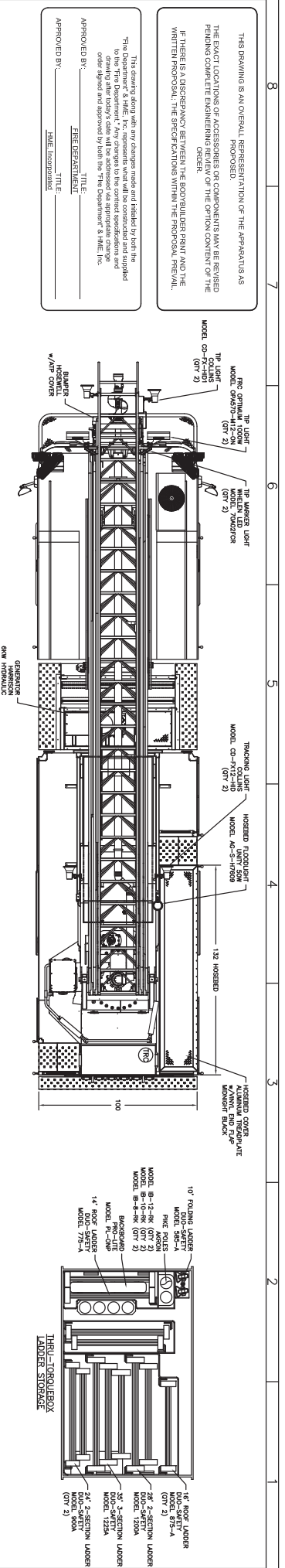
To view more photos, download CAD drawings, weight distribution charts, body specs, chassis specs and more, visit www.AlexisFire.com.



THIS DRAWING IS AN OVERALL REPRESENTATION OF THE APPARATUS AS PROPOSED.
 THE EXACT LOCATIONS OF ACCESSORIES OR COMPONENTS MAY BE REVERSED FROM THE LOCATION SHOWN IN THIS DRAWING.
 IF THERE IS A DISCREPANCY BETWEEN THE OVERALL PER PRINT AND THE WRITTEN PROPOSAL, THE SPECIFICATIONS WITHIN THE PROPOSAL PREVAIL.

The station along with any changes made and finished by both the Department & HME, Inc. requests will be constructed and supplied to the Fire Department. Any changes to the contract specifications and order placed and approved by both the Department & HME, Inc.

APPROVED BY: _____ TITLE: _____
 FIRE DEPARTMENT
 NAME: _____ TITLE: _____



COMPARTMENTATION						
COMPART.	WIDTH	HEIGHT	DEPTH	WIDTH	HEIGHT	VOLUME
L1	53"	24"	22"	53"	24"	150.8 FT ³
L2	53"	24"	22"	53"	24"	150.8 FT ³
L3	27"	63"	24"	27"	53"	23.6 FT ³
R1	53"	63"	24"	48"	53"	48.4 FT ³
R2	48"	53"	24"	48"	42"	18.2 FT ³
TEN	48"	18"	14.5"	48"	14"	8.9 FT ³

CREATED WITH AUTOCAD



1950 BYRON CENTER AVE.
 WYOMING, WI. 49509

LET	BY	DATE	REVISION
D	HMT	07 JUL '14	UPDATE TO CURRENT
C	R.S.	14 APR '14	CORRECTED OVERALL HEIGHT
B	A.U.	12 DEC '13	CLEAN ORDER RELEASE
A	R.S.	01 AUG '13	ORIGINAL RELEASE

DRAWN	DATE	APPROVED	DRAWING FILE
R. SLOTT	18 JUL '14	N/A	22467 HME 80' AERIAL
NO. 18	18	22467	HME 80' AERIAL
SCALE	1" = 1'		
SHEET	1 OF 1		

THIS PRINT IS PROVIDED ON A RESTRICTED BASIS AND IS NOT TO BE USED IN ANY WAY DETRIMENTAL TO THE INTERESTS OF HME, INC.